

Kaltura Video App for Canvas Setup Guide

Version: 1.0

Kaltura Business Headquarters

250 Park Avenue South, 10th Floor, New York, NY 10003

Tel.: +1 800 871 5224

Copyright © 2016 Kaltura Inc. All Rights Reserved. Designated trademarks and brands are the property of their respective owners.

Use of this document constitutes acceptance of the Kaltura Terms of Use and Privacy Policy.

Contents

Preface	5
About this Guide	5
Audience	5
Prerequisite Reading	5
Document Conventions	5
Section 1 Prerequisites	6
Section 2 Understanding the Setup Process	8
The Kaltura Application Framework (KAF) Admin Console	8
KAF Modules	8
Global	9
Modules	9
Modules/Channels	10
Modules/entryTypes	10
Modules/Custom/Core/KAF	10
Canvas KAF Administration: Actions and Configurable Fields	10
General Settings	10
Configuration Management: Global	12
Application	12
Categories	13
Channels	13
Client	14
Debug	15
Gallery	15
Header	15
Metadata	16
Moderation	16
Player	16
Security	18
SharedRepositories	18
Widgets	19
Search	19
MediaCollaboration	19
PlaylistPage	19
Configuration Management: Modules	20
Addcontent	20
Attachments	20
Captions	20
Channelplaylists	20
Chapters	21
Clipper	21
Comments	22

Contents

Disclaimer.....	22
Downloadmedia	23
Emailnotifications	24
Embed	24
Embedplaylist.....	25
Importchannel	26
Publish.....	26
Screencapture	26
Sidemymedia	26
Thumbnails.....	26
Userreports.....	27
Configuration Management: Channel Modules.....	27
Channelmoderation.....	27
Authoring Methods	28
Audioentry	28
Imageentry	28
YouTube.....	28
Custom/Core Modules/KAF	29
Browseandembed	29
Canvas	30
Hosted	30
Section 3 Roles and Permissions.....	31
Introductory to Role Mapping	31
Add People.....	31
Canvas Sends Corresponding LIS Role to Kaltura.....	32
KAF Grants Permissions According to the Mapping.....	32
Section 4 Common Use Cases of Role Configuration	34
Summary of Default Canvas -> LIS -> Kaltura Roles Mapping.....	35

Preface

This preface contains the following topics:

- [About this Guide](#)
- [Audience](#)
- [Prerequisite Reading](#)
- [Document Conventions](#)

About this Guide

This guide describes how to setup the Kaltura Video App for Canvas. Instructions are provided for setting up the app's behavior and how to control user roles and permissions using the Kaltura Application Framework (KAF) Admin Console.



NOTE: Please refer to the official and latest product release notes for last-minute updates. Technical support may be obtained directly from: [Kaltura Customer Care](#).

Contact Us: Please send your documentation-related comments and feedback or report mistakes to knowledge@kaltura.com. We are committed to improving our documentation and your feedback is important to us.

Audience

This guide is intended for Canvas and Kaltura administrators.

Prerequisite Reading

- [Kaltura Video App for Canvas User Manual](#)
- [Kaltura Video App for Canvas Deployment Guide](#)

Document Conventions

Kaltura uses the following admonitions:

- Note



NOTE: Identifies important information that contains helpful suggestions.

- Workflow



Workflow: Provides workflow information.

1. Step 1
2. Step 2

Prerequisites

The following items are required to setup the Kaltura Video App for Canvas:

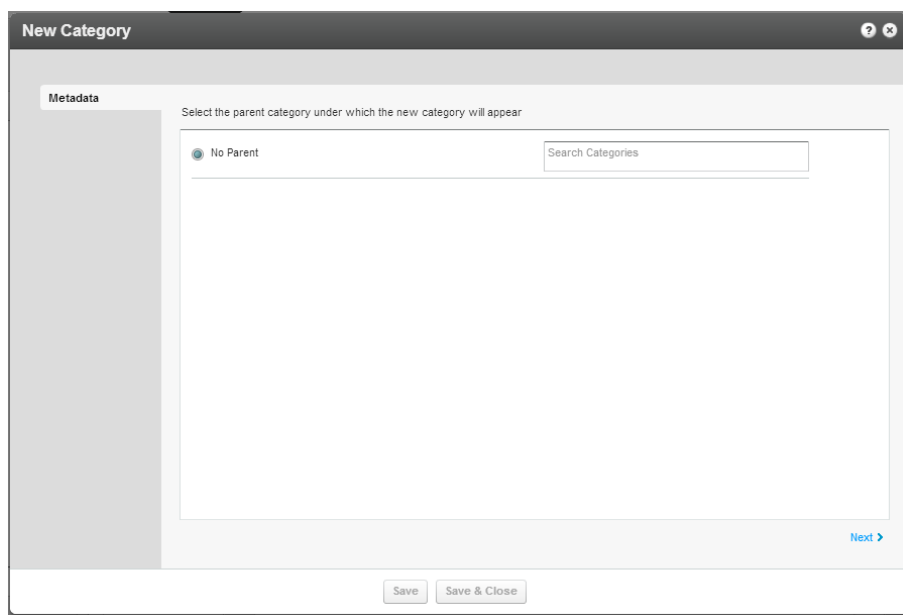
- Access to a Canvas environment with Account Admin permissions.
- A Kaltura account - Please contact your Kaltura representative for your Kaltura account details.
- Deployment of the Kaltura Video App for Canvas on your Canvas environment. For deployment instructions, see [Kaltura Video App for Canvas Deployment Guide](#).
- KAF Admin Console – please ask your Kaltura representative for credentials to access your KAF Admin Console instance.

Before You Begin

You will need to create a Canvas root category in the KMC, if not already created for you by your Kaltura representative.

To create the Canvas root category in the KMC

1. Log into the KMC.
2. Select the **Content** tab and then select the **Categories** tab.
3. Click **Add Category**.
4. On the New Category window, select the position of the root category and save your new category.



5. Click **Next**.
6. In the metadata tab, enter metadata for your new category and click Save.

Before You Begin

The screenshot shows a 'New Category' dialog box with the following fields:

- Name:** Canvas
- Description:** Used as KAF root category
- Tags:** (Empty)
- Reference ID:** (Empty)

Buttons at the bottom: Save, Save & Close

SECTION 2

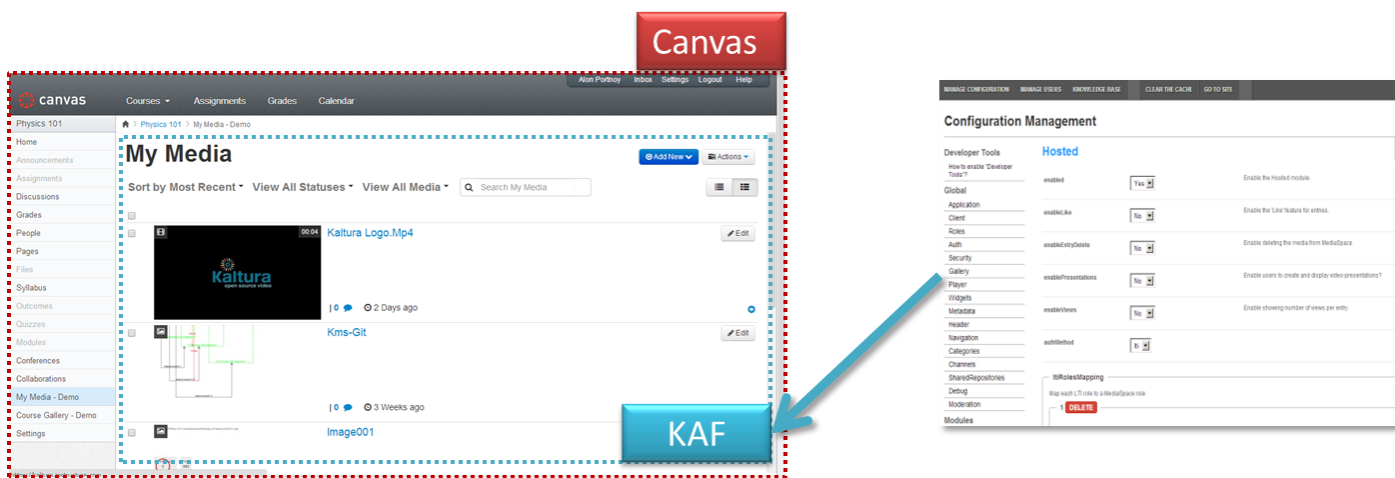
Understanding the Setup Process

The Kaltura Video App for Canvas offers an out-of-the-box solution that enables users to view, record, upload, publish, search, and share video directly from their Canvas environment. This translates into time and money saved for your organization, improved student engagement, creativity and learning results, as well as ease of use for students, faculty and teaching assistants.

The Kaltura Application Framework (KAF) Admin Console

The Kaltura Video App for Canvas is implemented on top of the Kaltura Application Framework (KAF), a feature rich framework that allows flexible and streamlined integration of Kaltura’s video solution and products into 3rd party applications such as Canvas. KAF is hosted and served directly from the Kaltura cloud servers and once integrated into your Canvas environment, presents different video components and workflows to users.

At the backend, the Kaltura Application Framework provides a flexible and extensible administration panel, called “KAF Admin Console”. The KAF Admin Console offers full control over the user experience and when interacting with videos inside Canvas. Nearly all configuration aspects of the Kaltura Video App for Canvas are configured through the KAF Admin Console.



Canvas

KAF Admin Console

KAF Modules

Your KAF instance is composed of multiple **KAF modules**, such as “Application”, “Player”, and “Auth”. Each module controls a different aspect of your Kaltura Video App for Canvas instance. A KAF module is composed of a set of **configuration fields**. All KAF modules are listed on the left menu in your KAF Admin Console instance.

MANAGE CONFIGURATION | MANAGE USERS | KNOWLEDGE BASE | CLEAR THE CACHE | GO TO SITE | LOGOUT

Configuration Management

Developer Tools **Hosted** Search Configuration

How to enable "Developer Tools?" **KAF Modules** Yes

Global enableLike No **Configuration fields** Enable the 'Like' feature for entries.

Application allowEditPublished Yes Enable editing of published entries

Auth enableDeletePublished Yes Enable deletion of published entries

Categories enableEntryDelete Yes Enable deleting the media from MediaSpace

Channels enablePresentations Yes Enable users to create and display video-presentations?

Client enableViews No Enable showing number of views per entry.

Debug showPageTitles Yes Show page titles

Gallery expandButton Auto Player expand button. Auto is on only if there are modules providing an entry sidebar.

Header manPublish Yes Enable publish to a list of categories - from the menu, media, and upload. Disable this if you do not have access to the list of categories.

Metadata

Moderation

Navigation

Player

Roles

Security

SharedRepositories

Widgets

Modules

Addcontent

Addtoplaylists

Bootswatch

Captions

NOTE: Your KAF Admin Console may display modules and configuration fields that are not listed in this guide, some of which may be disabled. It is important that you do not modify the configuration of the disabled modules (and not enable them) without consulting with your Kaltura representative.

The following KAF modules are required for configuring the Kaltura Video App for Canvas and are described in this guide:

Global

- [Application](#)
- [Auth](#)
- [Categories](#)
- [Channels](#)
- [Client](#)
- [Debug](#)
- [Gallery](#)
- [Header](#)
- [Metadata](#)
- [Moderation](#)
- [Player](#)
- [Security](#)
- [SharedRepositories](#)
- [Widgets](#)
- [Search](#)
- [MediaCollaboration](#)
- [Playlist Page](#)

Modules

- [Addcontent](#)
- [Attachments](#)

- [Captions](#)
- [Channelplaylists](#)
- [Chapters](#)
- [Clipper](#)
- [Comments](#)
- [Disclaimer](#)
- [Downloadmedia](#)
- [Emailnotifications](#)
- [Embed](#)
- [EmbedPlaylist](#)
- [Importchannel](#)
- [Publish](#)
- [Screencapture](#)
- [Sidemymedia](#)
- [Thumbnails](#)
- [Userreports](#)

Modules/Channels

- [Channelmoderation](#)

Modules/entryTypes

- [Audioentry](#)
- [Imageentry](#)
- [Youtube](#)

Modules/Custom/Core/KAF

- [Browseandembed](#)
- [Canvas](#)
- [Hosted](#)

Canvas KAF Administration: Actions and Configurable Fields

General Settings

Your KAF account comes pre-configured with the following settings which **should not be changed**:

Module	Fields	Description
Application	InstanceId, privacyContext, userRoleProfile	Internal constant identifiers of your KAF instance. Please note that privacyContext should be empty.
Auth	sslSettings	All site

Understanding the Setup Process

Module	Fields	Description
Client	serviceUrl	https://www.kaltura.com
	VerifySSL	Yes
Security	allowLoadInIframe	Yes
Addcontent	enabled	Yes
Userreports	enabled	Yes
Publish	enabled	Yes
Browseandembed	enabled	Yes
Canvas	enabled	Yes
Hosted	enabled	Yes
	enableLike	No
	enabledEntryDelete	No
	enablePresentations	No
	enableViews	No
	authMethod	Lti

In addition, you will need to specify the root category you created under the Categories module.

Module	Fields	Description
Categories	rootCategory	Select the category you created in the KMC.

Configuration Management: Global



NOTES:

1. Some fields are displayed only when you select a specific value for a different field.
2. The group's configurable fields follow the group name.



To modify KAF configuration modules

- In the KAF Admin window select the Manage Configuration tab.



NOTE: Related KAF modules: Application, Auth, Client, Security, Categories, Addcontent, Publish, Browseandembed, Moodle, Hosted

Application

Field	Description
instanceId	Unique string to identify that installation of Moodle. This value can be set during installation only.
privacyContext	String used to be set as privacy context on root category. This value can be set during installation only.
userRoleProfile	Metadata Profile ID for user's role per KAF installation instance
title	What is your Moodle website title? The website title is displayed in the browser's title bar and usually is displayed in search engine results. Page titles consist of the name of the currently loaded media and the website title. For example, if a page has a video called 'My Video' and 'Moodle is the website title, the page title is: 'My Video – Moodle
footer	What is your Moodle footer text? default is: Moodle video portal by Kaltura
language	Which language should KAF use? Note: Language files are in /locale/kms/{LANG}/default.po. See here for the list of supported KAF localization languages. Fr = French Jp= Japanese SR= Serbian Pt-Br Portuguese Brazilian En = English Es- Spanish D2L = custom language for LMS En_Custom = custom language Ar = Arabic De = German Da - Danish
enableLike	Enable the 'Like' feature for entries. This should be configured in the Hosted module.

Field	Description
enableWebcam	Enable or Disable the Webcam upload.
enableEntryTitles	Include the media title in the URL of the media page when browsing the site and sharing a link to the media.
allowEditPublished	Enable editing of published entries. This should be configured in the Hosted module.
allowDeletePublished	Enable deletion of published entries. This should be configured in the Hosted module.
enableEntryDelete	Enable deleting the media from Moodle.. This should be configured in the Hosted module.
enableViews	Enable showing number of views per entry. This should be configured in the Hosted module.
showPageTitles	Show page titles. This should be configured in the Hosted module.
enableUnlisted	Enable setting entries as unlisted. An unlisted entry can be viewed by anyone with the link to the entry page. Unlisted media can be accessed by anyone with a direct link to the media page and will not be displayed in search results. This is not relevant for KAF applications including Moodle
timezone	Which timezone should Moodle use to present times and dates.
assetConsolidationEnabled	Enable assets (js/css) consolidation and minification.

Categories

Field	Description
rootCategory	Which root category does Canvas use for all categories and content? A root category must be defined in the KMC.
restricted	Restrict categories to specific roles. Only users with the specified role can view media in the restricted category. Only users with adminRole or unmoderatedAdminRole can add media to the restricted category.
category	Select a category to restrict.
roles	Select one or more roles that can access the restricted category. Use 'Ctrl' to select multiple roles.

Channels

Field	Description
entriesPageSize	How many entries can be displayed on each channel page? (The default is 15)
pageSize	How many channels can be displayed on each channel page? (The default is 20.)
pageCount	How many page links can be displayed in the channel pager? (Dots represent page links that are not displayed.)
pagerType	Which kind of paging mechanism should be used in

Field	Description
	the channel page?
defaultChannelType	Select the default channel type when creating a new channel.
channelCreatorOpen	Select the minimal role that can create Channels.
channelCreatorRestricted	Select the minimal role that can create Restricted Channels.
channelCreatorPrivate	Select the minimal role that can create Private Channels.
channelCreatorSharedRepository	Select the minimal role that can create Shared repositories.
channelCreatorPublic	Select the minimal role that can create Public Channels
channelsTermUse	Add channel term of use. Use to configure a policy message that is displayed to users every time a channel is created. The configured text is displayed in the top of the channel creation
supportPublicChannel	Set to yes to support creation of channels that anonymous users can access. Note that after you change to 'no' anonymous users won't be able to view your public channels and the option to create public channels will be removed from the create channels page. Note that if you enabled this field then disabled it, the channels/ type would have to be manually reset to a new channel type.
channelsSorting	Use the drop down to select the channels' sorting default. The options are: Media Count, Alphabetical, Members and Subscribers or Most Recent..

Client

Field	Description
serviceUrl	The URL of the service for API calls. Modify the URL if you use the Kaltura On-Prem Edition.
CDNUrl	The CDN regular URL Used for Player and html5lib. Leave empty for default. You can change the Kaltura Server CDN URL used by the Kaltura HTML5 player and player embeds. The default value is http://cdnapi.kaltura.com . To update your CDN URL, add the URL in this field. Note: When configuring a KMS site to HTTPS, also change the CDN URL to https://cdnapisec.kaltura.com .
SecuredCDNUrl	The CDN secured URL. Used for Player and html5lib. Leave empty for default.
partnerId	Copy your Kaltura account's Partner ID from the Kaltura Management Console (KMC): KMC->Settings->Integration Settings.
secret	Copy your Kaltura account's user secret from KMC->Settings->Integration Settings (http://www.kaltura.com/index.php/kmc/kmc4#account integration).

Field	Description
	Kaltura uses your user secret to create secure sessions to access the Kaltura API.
adminSecret	Copy your Kaltura account's administrator secret from KMC->Settings->Integration Settings (http://www.kaltura.com/index.php/kmc/kmc4#account integration). KAF uses your administrator secret when you need an 'admin' session, which allows more actions than a user secret session.
verifySSL	Set to No, if you want to use SSL with a self-signed certificate.

Debug

Field	Description
logLevel	Debug level of the KAF Log File (logs/kms.log)
kalturaDebug	Enable debug log of requests to the Kaltura API (logs/apidebug.log)
kalturaStats	Enable stats log of requests to the Kaltura API (logs/api.log)
emailErrors	Enable sending emails in case of errors

Gallery

Field	Description
pageSize	How many entries can be displayed on each gallery page? (The default is 10.)
pageSizeWide	How many entries can be displayed on each gallery page in the Wide gallery view (for example, search results, playlists)? (The default is 24.)
pageCount	How many page links can be displayed in the gallery pager? (Dots represent page links that are not displayed.)
pagerType	Which kind of paging mechanism should be used in the gallery page?
sortMediaBy	By default, how should media in the gallery be sorted?
globalSearchSortMediaBy	By default, how should media in the global search be sorted?
thumbnailRotator	Enable thumbnail image rotation on mouse over in galleries
categoryDefaultView	Default view for categories. You can define optional view modes for media items inside Galleries. Choose from Grid, Collapsed view or Detailed view.
categoryExplicitDateFormat	Explicit date format.

Header

Field	Description
headerStyle	Which background and matching theme should Canvas use for the header?
logoImageUrl	The option to load logo from URL - specify the URL of the logo. If URL is specified it will be used instead of logoImage (above). Default logo size is 325px wide X 41px high. Note: The width of the logo image affects the amount of space available for the Header menu. (See menu configuration

Field	Description
	below.)
logoAltText	The 'logoAltText' options are: [1] If you insert an image file in the 'logoImage' field, you may enter alternate text for the tag's 'alt' attribute; [2] If you enter 'false' or an empty string in the 'logoImage' field, you must enter text for the page header.
logoLink	The options for defining the behavior when a user clicks the logo are: [1] Enter 'false' if you do not want the logo to be clickable; [2] Enter 'home' to display the home page (displayed when Canvas opens); [3] Enter a full URL (starting with http://) to open a different page in a new browser window/tab.
enableUploadButton	Enable or Disable the 'Add New' button in the site's header

Metadata

Field	Description
descriptionRequired	Require users to fill in the 'Description' field when uploading or editing media?
tagsRequired	Require users to fill in the 'Tags' field when uploading or editing media?
readMoreEnabled	Enable/disable read more for entry description - shortening to 500 characters. Notice : channel and category description is always shortend.
metaDataInReadMore	If enabled metadata is hidden until clicking on 'read more...' works for all descriptions - entry/channel/category
basicNameFieldHelperText	Tooltip comment for the Name field when uploading or editing an entry.
basicDescriptionFieldHelperText	Tooltip comment for the Description field when uploading or editing an entry.
basicTagsFieldHelperText	Tooltip comment for the Tags field when uploading or editing an entry.
showDescriptionInTooltipMeta	Choose whether to display field's description as a tooltip

Moderation

Field	Description
reasonSex	Please provide the reasons Moodle users can choose for flagging media. (If none are provided, the default Kaltura reasons will be used)
reasonViolence	Please provide the reasons Moodle users can choose for flagging media. (If none are provided, the default Kaltura reasons will be used)
reasonHarmful	Please provide the reasons Moodle users can choose for flagging media. (If none are provided, the default Kaltura reasons will be used)
reasonSpam	Please provide the reasons Moodle a reasons will be used)

Player

Kaltura Video Package for Moodle instances are automatically created using the [Kaltura v2 Player](#).

Module	Fields	Description
Player	playerId	What is the player ID (uiConf ID) of the player that plays the embedded video?
	playerBarHeightPixels	The height (in pixels) of the player ui which is not part of the actual video (for example - the bottom bar)
	playerVideoRatioPercent	The ratio (in percent) of the video inside the player. Standard values: 16:9 = 56.25 , 4:3 = 75 , 16:10 = 62.5
	playerEditId	What is the player ID (uiConf ID) of the player that edits entries?
	autoPlayOnLoad	When KAF loads, should the video that is loaded in the player begin playing automatically? Notes: (1) Autoplay is triggered when KAF starts and each time a new page loads, such as when switching from My Playlists to a gallery page. (2) The player always begins playing automatically when a user clicks a video in a gallery, regardless of whether autoPlayOnLoad is enabled.
	playback	<p>Which Playback method should KAF use? Kaltura Auto' is the default playback option for a new KAF instance.</p> <p>KAF administrators can select additional playback options. From <i>Player > playback</i>, select any of the following options:</p> <ul style="list-style-type: none"> • Auto - Kaltura server chooses between HTTP Progressive Download and Akamai's HTTP Adaptive Streaming, based on entry duration and available flavors. Auto gives you the best video delivery and playback quality for your entry. • HTTP Progressive Download – Allows you to pause the video playback and wait for the content to download. Typically used where viewers have very limited bandwidth and might experience more buffering than adaptive bitrate. • HTTP Streaming (HDS) - HTTP streaming based on Adobe technology. Allows adaptive bitrate so the player can adjust the video quality on the fly based on network and CPU conditions. • HTTP Streaming (Akamai HD) – HTTP streaming based on Akamai's technology. Allows adaptive bitrate so the player can adjust the video quality on the fly based on network and CPU conditions, formally called Akamai HD. • RTMP Streaming – RTMP streaming based on Adobe technology. Allows adaptive bitrate so the player can adjust the video quality on the fly based on network and CPU conditions. • Secure Transport (RTMPE) - RTMP encrypted using Adobe's security mechanism which wraps the RTMP session in a lighter-weight encryption layer.
	playerModerationId	What is the player ID (uiConf ID) of the player shown

Module	Fields	Description
		in moderation pages?

Security

Field	Description
allowLoadInIframe	Allow Canvas to be loaded in Iframe. The default is NO for XFS.

SharedRepositories

The SharedRepositories module allows any member to not only browse the media that is published in the shared repository, but also use the media to publish to other channels and/or categories. The shared repository allows education institutions and enterprises to create a shared media location for media that anyone with access to it has publishing rights to other areas in Canvas.

Metadata is composed of the following:

- customDataProfileId
- nested filters

At least one of these must be defined for the Advanced Search form to display in your KAF instance. **customDataProfileId (schema)** - Create a metadata schema, and select it in the admin sharedRepositories module..



NOTE: The customDataProfileId selected in the sharedRepositories module **MUST** be different than the profileId selected in [Customdata](#) module.

nested filters - Select "yes" in the KMS admin nestedFilters field, to enable the nested filters appearance in KMS and to create the nestedFilters category (if needed).

Nested filters should be created in the KMC. In the KMC Categories tab site > nestedFilters category, add nested categories (up to 2 levels) which will be used as labels on the entry. For example, Create nestedFilters>Science category and nested to it create nestedFilters>Science>Physics and nestedFilters>Science>Biology. This allows you to tag your entry with the relevant labels.

Currently, searching for nested filters is only available via the Shared Repository Advanced Search.

Field	Description
enabled	Enable shared repositories.
amountOfSharedRepositories	Amount of shared repositories to show in the drop down (when adding media from shared repository).
termsOfUseLink	Enable Terms of Use
nestedFilters	Enable nested filters. Configure them as nested categories under root>site category in the KMC (http://kmc.kaltura.com/index.php/kmc/kmc4#content categories).
customDataProfileId	Choose custom metadata schema for media in the shared repository. All custom data schemas can be viewed in KMC > Settings > Custom Data (http://www.kaltura.com/index.php/kmc/kmc4#account metadata).
requiredFields	Which custom metadata fields are required before publishing media to a shared repository? Use custom data system names from KMC > Settings > Custom Data (http://www.kaltura.com/index.php/kmc/kmc4#account metadata).
dateFormat	What is the format of the date for the datepicker (of the shared repository custom data)?

Widgets

Field	Description
ksuld	What is the uiConf ID of the Kaltura Simple Uploader (KSU)? KAF uses KSU to upload videos, images, and audio files.
krecordId	What is the uiConf ID of the kRecord widget? KAF uses kRecord to record and upload video from a webcam.
rtmpUrl	What is the URL of your RTMP Server? The URL is required for Webcam recording.
krecordDefaults	Configure recording details. Select Yes, to expose additional fields to configure the webcam widget quality.
emailErrors	Enable sending emails in case of errors.

Search

Field	Description
entriesPageSize	How many entries to show in search results.
inVideoPageSize	How many in-entry search results to show.

MediaCollaboration

Field	Description
mediaCollaborationEnabled	Enable MediaCollaboration module.
changeOwnerEnabled	This field is available when the MediaCollaboration module is enabled. The change owner feature has a special configuration for the co-editor/co-publisher and can be set to enable or disable the co-editor or co-publisher without any dependencies.

To add a user as co-editor or co-publisher, the user must log in to KAF prior to using this feature.

Enable this module to change the media owner and edit co-editors and co-publishers.



NOTE: If configuration is set to 'no' after it was set to 'yes' and in the interim, entries were added with co-editors and co-publishers, all co-editors and co-publishers will lose their ability to view, edit or publish those entries.

PlaylistPage

The configuration page dedicated to generating a player ID is accessed from the **Configuration Management** page **Global** sub-category **PlaylistPage**. You can generate a player ID or refer to the playlist player ID in this module if you need to use the player ID number.

Field	Description
playerId	Enter the Playlist playerId. The playerId field is initially empty and the following message is displayed: "Create a Playlist player ID (uiConf ID) for playlists dedicated view page". Click Create to generate the player ID.

Configuration Management: Modules



NOTES:

- 3. Some fields are displayed only when you select a specific value for a different field.
- 4. Field group names are in bold. The group's configurable fields follow the group name.

Addcontent

Field	Description
enabled	Enable the Addcontent module.

Attachments

Enable this module to:

- allow media owners to attach files of any type to their media,
- Enable media viewers to download the file before, during or after viewing.

Field	Description
enabled	Enable the Attachments module.

Captions

Field	Description
enabled	Enable the Captions module.
captionsKsuld	What is the uiConf ID of the Kaltura Simple Uploader (KSU) used for captions? KAF uses KSU to upload .SRT and .DFXP caption files.
thumbnailRotator	Enable thumbnail image rotation on mouse over in captions search results
entriesPageSize	How many entries are displayed as captions search results on each page? (The default is 10)
captionsPageSize	How many caption lines are displayed for each entry in search results? (The default is 5)

Channelplaylists

There are three admin modules used to configure the Channel Playlists: For reference, the Channelplaylists modules are used to create and modify course playlists.

- Channelplaylists
- [PlaylistPage](#)
- [Embedplaylist](#)

Field	Description
enabled	Enable the ChannelPlaylists module
channelPlaylistsTabName	The title of the tab which will be added to the channel (Media

Field	Description
	Gallery) and will be presented first.
entriesSource	Add media to the playlist from the cahnnel gallery itself, from My Media or from all entitled areas in the site.

From this page you can:

- [Enable the Course Playlists feature](#)
- [Rename the Course Playlists tab's name](#)

Enabling Course Playlists

Course Playlists (Channelplaylists) activated by default for the Moodle Video Package.

To enable Course Playlists

1. From the **Channelplaylists** page change the setting in the **enabled** field from **No** to **Yes**.
2. Click **Save** to apply the changes.

Renaming the Playlists Tab

Admin users can rename the Playlists tab that appears in Media Gallery page:

To rename the Playlists tab:

1. From the **Channelplaylists** page change the setting in the **CoursePlaylistsTabName** field from **Playlists** to any value you want.
2. Click **Save** to apply the changes.

Chapters



NOTE: The minimum player version required for this module to work is v2.26.
The Chapters module is mandatory for the Kaltura [CaptureSpace](#) module but can also work independently, without it.

Field	Description
enabled	Enable the Chapters module.

Clipper

Enable this module to create a Clip button in the Edit Media page. The Create Clip feature allows media owners to create clips directly from the Edit Media page.

Field	Description
enabled	Enable the Clipper module.
showClipAttribution	Should a clipped entry page contain an attribution to the original entry.
clipKdpUiconfId	What is the uiConf ID of the clipper kdp.
clippAppUiconfId	What is the uiConf ID of the clipp App.
clipperProfileId	The clipper custom data profile id.)

Comments

Field	Description
enabled	Enable the Comments module.
channelCommentsProfileId	Custom Metadata profile Id for channels
entryCommentsProfileId	Custom Metadata profile Id for entries
entryCommentsCountProfileId	Custom Metadata profile Id for entry comments count
commentsAllowed	Who can add comments?
pageSize	Number of comments to display
sort	Sort comments by newest or oldest first?
sortReplies	Sort replies by newest or oldest first?
allowClose	Allow content owners to disable/close comments for particular entries
showInGalleries	Enable/disable showing of comments for entries in the gallery page
showInChannels	Enable/disable showing of comments for entries in the channels page
showInChannelsOnly	Show comments on media entries to users only in the context of a channel/gallery. In this case, users will not be able to see media comments if browsing to the media from search results, my media or any other context that doesn't include the context of the channel/gallery. To enable this feature, from the KAF Admin > Comments set showInChannelsOnly to Yes.
showAddTimedCommentsCheckbox	Show Add comment at mm:ss checkbox.
showPrivateCommentsConfig	Show configuration for setting private comments per gallery/channel

Disclaimer

KAF administrators can enforce the Terms of Agreement text and checkbox for end-users to review and/or accept before uploading or publishing content.

Field	Description
enabled	Enable the Disclaimer module.
disclaimerProfileId	The disclaimer custom data profile id.
disclaimerField	Which custom data field is required to be checked when uploading or publishing media?.
disclaimerText	Text to show when explaining user the reason for this checkbox.
agreeText	The text to display next to the checkbox that the user accepts the terms of agreements.
displayArea	Before Upload - Terms of agreement are displayed to the user before they can contribute content. Only after the user agrees, the upload, launch screen recorder and other buttons are displayed. After checking the box, the button (or other option to upload) is enabled and the checkbox is disabled so it cannot be unchecked.

Field	Description
	Before Publish - Terms of agreement are presented as part of metadata in the upload screen and in the edit media screen. The checkbox can be configured as a required field preventing the user from publishing media if the checkbox is not selected (This is the same behavior as when required metadata is not completed). After terms are agreed to by the user (The checkbox is selected and saved) the field turns into view only and select cannot be unchecked,
agreeRequired	This is relevant only if selected to show before publish. In this case the module displays the text of the terms of agreement and does not display a checkbox for the user to select.

Downloadmedia

Enable this module to configure downloadable versions of the media for viewers to download from the media page.

Field	Description
enabled	Enable the Downloadmedia module.
downloadRoles	Select one or more roles that can use the Downloadmedia module.
downloadFlavors	Click Add Download Flavors to configure the flavors that will be visible to the media owner to choose from. You, the admin, choose as many flavors as you want from the list of the transcoding profiles, as they appear in the KMC. You then can name the flavors as they should be displayed to the media owner. If no name is given, the flavor default name in Kaltura is used as the default name. The final list that is displayed to the media owner includes the list that was chosen by the admin, the flavors that are actually set (in the KMC) for this KAF instance and all other available flavors on the specific entry. It is advised that the KAF admin will verify with KMC admin what flavors are checked for the account beforehand.

Example of Downloadmedia Configuration

downloadFlavors

1 DELETE

flavorId SD/Small - WEB/MBL ▼
Select a flavor which will be available to be downloaded via the native app.

name mobile
Enter the label for the flavor.

2 DELETE

flavorId Basic/Small - WEB/ME ▼
Select a flavor which will be available to be downloaded via the native app.

name small
Enter the label for the flavor.

3 DELETE

flavorId SD/Large - WEB/MBL ▼
Select a flavor which will be available to be downloaded via the native app.

Emailnotifications

Click on the dedicated page link in this screen to get to the page where you can enable the different email notification events and define the email templates for each.

Field	Description
enabled	Enable the Emailnotifications module.

Embed

Field	Description
enabled	Enable the Embed module.
showMediaURL	Show link to media page.
emailShare	Sharing by email
allowEmbedIframeShare	Allow/Restrict sharing using 'iframe'. This configuration is only supported for non v2 supported players
embedAllowed	Select one or more roles that can use the Embed module. Use 'Ctrl' to select multiple roles. End-users can share Kaltura unlisted and published media via Email. This is available in share tab, like media grab embed and page link. The media will be shared by the default mail client on the machine.
embedSkins	Define skins that can be used for embedded players.
name	What is the name of the skin? The skin name is displayed when the user selects an embed skin.
imgFile	What is the relative path to the image file on the server? The image file represents how the skin looks.

Field	Description
uiConfId	What is the numerical value of the player ID to use in the embed code?
embedSizes	Define sizes that can be used for embedded players. Define the player size in the following format: {width}x{height}
large	608x402
medium	400x285
small	304x231

Embedplaylist

The configuration page dedicated to activating and configuring the Embed Feature is accessed from the **Configuration Management** page **Modules** sub-category **Embedplaylist**.

Clicking **Embedplaylist** opens the Embed configuration page:

From this page you can:

- Enable the Embed Feature
- Define who (what Role) will be able to use the Embed feature by choosing one of the options in the PlaylistEmbedAllowed.
- Direct users to the SSO Login page by setting the value of autoRedirect to Yes.
- Define if the redirect for authentication will be in the top of the browser window (for global authentication) or in an iFrame.
- Create your own redirect message in autoRedirectMessageHTML.
- Define the HTML text (may include links) to display inside the iFrame in case a user is only allowed to a subset of the playlist content due to entitlements with authorizedForSubsetHTML.
- Define the HTML text (may include links) to display inside the iFrame if autoRedirect is set to False with notAuthenticatedHTML.
- Define the HTML text (may include links) to display inside the iFrame in case Kaltura Entitlement authorization fails with notAuthorizedHTML.
- Specify the URL to an alternate CSS, to allow a customer to customize the iFrame design to fit corporate style guide with overrideCSSURL.
- View skin colors and positions, V2 player types and player sizes.

Field	Description
enabled	Enable the Embedplaylist module.
playlistEmbedAllowed	Select one or more roles that can use the Embedplaylist module. Use 'Ctrl' to select multiple roles.
embedSkins	Define skins that can be used for embedded playlists.
light_horizontal	
dark_horizontal	
light_vertical	
dark_vertical	
embedSizes	Define sizes that can be used for embedded playlists.
horizontal	
vertical	

Importchannel

Channel/Media Gallery Managers have the ability to import content from other Channels/Media Galleries they manage.

Field	Description
enabled	Enable the Importchannel module.

Publish

Field	Description
enabled	Enable the Publish module.
defaultPublishStatusOnUpload	Define the default privacy for each newly uploaded media. Prior to this change, each newly uploaded media's status was set to "Private" as the default. Now, Canvas administrators can configure every newly uploaded media to be set as "Unlisted" by default, and allow the media owner to change the privacy mode. To configure this option, set the required value for defaultPublishStatusOnUpload . Note that this configuration is applicable only if Unlisted mode is enabled on your Kaf/Canvas instance. You can check if it is enabled under Application > enableUnlisted.
manPublish	Enable publish to a list of categories - from the menu, media, and upload. Disable this if you do not have access to the list of categories.

Screencapture

Field	Description
enabled	Enable the Screencapture module.
ksrId	What is the widget ID (uiConf ID) of the Kaltura Screen Recorder Widget (KSR) used in Moodle?
videoBitrate	The video bitrate quality (in kbps) to use for the capture. For example 2000
advancedOptionsEnabled	Enable the option to select frames per second by the user
limitationNoteEnable	Show limitation note?
limitationNote	Configure limitation note.

Sidemymedia

Field	Description
enabled	Enable the Sidemymedia module.
limit	How many Sidemymedia items can be displayed?

Thumbnails

Field	Description
enabled	Enable the Thumbnails module.
thumbnailsKsuld	What is the uiConf ID of the Kaltura Simple Uploader (KSU) used for thumbnails upload? Canvas/KAF uses KSU to upload thumbnails files.
extensionWhitelist	define allowed extensions, example: jpg, png, jpeg, gif (one item per extension)

Userreports

Channel Managers can measure and analyze the user engagement and contribution to their channels. These contextual analytics allow channel managers to answer important questions such as: What are the most popular videos in the channel? Who are the members that watch the most videos and what is their drop off rate? Who are the members that contribute the most media to the channel?

The mediaAnalytics field should be enabled to display the Analytics page. The Analytics page is accessed from the 'Actions' drop down of the entry page. The Analytics report is identical to the analytics for the entry in the KMC.

Field	Description
enabled	Enable the Userreports module.
mediaAnalytics	Enable media analytics for media owner
num_days	Default number of days
page_size	Default page size

Configuration Management: Channel Modules

Channelmoderation

You can define whether new Media Galleries that are created should be moderated by default. In addition, Moodle administrators can configure if the moderation option can be disabled by Media Gallery managers, to comply with use cases where moderation must be enforced. In the *Channelmoderation* module, you can set the *moderationDefaultValue* to define if the moderation option should be enabled or not by default when Media Galleries are created.

- If forceModeration = None then the moderationDefaultValue comes into play and the default value is set accordingly
- If forceModeration = Moderated or Not Moderated then this field is the stronger one and sets the default behavior.

Module	Fields	Description
Channelmoderation	enabled	Enable the Channelmoderation module.
	forceModeration	Force moderation on every new Media Gallery creation.
	moderationDefaultValue	Default value when moderation checkbox is enabled

Configuration Management: Entry Type Modules

Authoring Methods

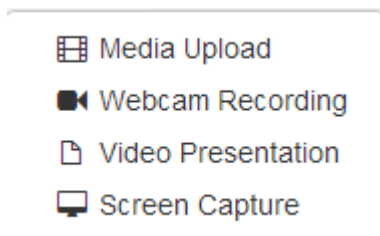


Related KAF modules: Widgets, Screencapture, Captions, Metadata,

The KAF Admin Console provides great flexibility in configuring different authoring methods users can utilize for creating new content. To date, the following methods are available (with additional methods to be added in the future):

- Uploading media from a local machine
- Capturing a video from a webcam using the Kaltura Webcam Recorder (KRecord)
- Adding a Video Presentation
- Creating a new screencast using the Kaltura Screen Recorder (KSR)

Please refer to the [Kaltura Video Package for Canvas User Manual](#) for more details about each of these methods.



Audioentry

Field	Description
customPlayerId	What is the player ID (uiConf ID) of the player that plays audios? Leave blank to use the default player.
playerBarHeightPixels	The height (in pixels) of the custom player ui which is not part of the actual video (for example - the bottom bar). Leave blank to use the default player value.
playerVideoRatioPercent	The ratio (in percent) of the audio inside the player. Standard values: 16:9 = 56.25 , 4:3 = 75 , 16:10 = 62.5. Leave blank to use the default player value.
embedSizes	Define sizes that can be used for embedded players. Define the player size in the following format: {width}x{height}. This setting requires a custom player. If a custom player is not specified, the audio entry uses the default video player.

Imageentry

Field	Description
imagePlayerId	What is the player ID (uiConf ID) of the player that shows images?
imageWatermarkUrl	What is the URL of the image that should be used as watermark?

YouTube

Moodle users can add YouTube video content and metadata into Moodle. Hosted content on YouTube is played back on the Kaltura V2 player from version 2.13 and above. To update the player to the latest player version, re-save the player settings in the KMC Studio > Universal Studio tab.

Field	Description
enabled	Enable the Youtube module
previewPlayer	The player uiconf to use for the YouTube entry preview when adding a new entry. Leave blank to use the default KAFplayer.
replaceYouTubeEntryMessage	The message to display when replacing a YouTube entry.

Custom/Core Modules/KAF

Browseandembed

The Browseandembed KAF module is used to enable and configure the Browse, Search and Embed tool in Moodle. This tool is used in the following places:

- Kaltura Video Presentation
- Kaltura Video Resource
- Video submissions in a Kaltura Media Assignment
- Video embeds in TinyMCE elements across the site

Fields	Description
enable	Yes*
returnUrlMethod	POST*
allowEmbedFromMultipleCourses	When set to Yes, users will be able to embed videos from Media Galleries of all the courses they have access to. Set to No if you want to limit users to the Media Gallery of the current course only.
filterTypeAttribute	custom_filter_type* The LTI attribute the get the filter type from.
disableAddNewAttribute	custom_disable_add_new*. The LTI attribute the get the disable-add-new from.
enableNewBSEUI	Yes
BSEPlayerID	The default browse and embed player
minimalBSERole	Minimal KMS Role allowing browsing and embedding media
embedSizes	Define sizes that can be used for embedded players. Define the player size in the following format: {width}x{height}
enableAssignmentSubmission	This feature enables an additional pop up screen when selecting media in Browse, Search and Embed to verify if the user is submitting an assignment. If confirmed, the selected entry will be cloned under a different user name to prevent editing and deletion

Fields	Description
assignmentSubmissionText	Determines the text that will appear on the pop up message when submitting an assignment. In case left empty, the default message will appear.
assignmentSubmissionMaxRole	This sets the highest role level which will see the pop up upon selecting an entry in Browse, Search and Embed.

Canvas

Field	Description
enabled	Enables the Canvas module. This setting is preconfigured and should not be changed

Hosted

Field	Description
enabled	Enables the Hosted module. This should not be changed
enableLike	Enable the 'Like' feature for entries.
allowEditPublished	Set to <i>No</i> if you want to prevent users from editing entries after they have been published to a course Media Gallery or embedded using the Browse, Search and Embed module.
allowDeletePublished	Set to <i>No</i> if you want to prevent users from deleting entries after they have been published to a course Media Gallery or embedded using the Browse, Search and Embed module.
AllowUnpublishPublished	Set to <i>No</i> if you want to prevent users from setting entries to private after they have been published to a course Media Gallery or embedded using the Browse, Search and Embed Module
enableEntryDelete	Set to <i>No</i> to completely prevent users from deleting entries
enableViews	Enable showing number of views per entry.
showPageTitles	Enable showing page titles
expandButton	Player expand button. Auto is on only if there are modules providing an entry sidebar.
manPublish	Yes. This should not be disabled.
authMethod	This should not be disabled
sharedRepositoryCategoryId	Shared repository category ID

Roles and Permissions



Related KAF modules: Hosted

See [Common Use Cases of Role Configuration](#) for information and recommendations for common role configuration in the Kaltura Video App for Canvas.

Introductory to Role Mapping

The Kaltura Video App for Canvas implements role mapping from Canvas roles to Kaltura roles via [LIS roles](#). Each role that is assigned to a user in Canvas is mapped to one of the roles defined in the [LIS standard](#). When a user is assigned with a role in a Canvas course for example. Student or Teacher, Canvas translates this role to an LIS role which is then sent to KAF. On KAF's side, a dedicated module provides flexible mapping between LIS roles and Kaltura roles, allowing a very granular control over the behavior of the different Kaltura modules in Canvas.

This process is described in the following workflow:



Workflow:

1. Users are assigned a Canvas role when added to courses via the [Add People](#) dialog
2. [Canvas sends the corresponding LIS role to Kaltura.](#)
3. [KAF Grants Permissions](#) according to mapping.

Add People

Users are assigned a Canvas role when added to courses via the [Add People](#) dialog:

Add People

Type or paste a list of email addresses below:

"Example Student" <student@example.com>, "Lastname, Firstname" <firstlast@example.com>, justAnEmailAddress@example.com

Role: Student

Section: Student, Teacher, TA, Designer, Observer

Next

Canvas Sends Corresponding LIS Role to Kaltura

When the user accesses a Kaltura module, such as My Media and Media Gallery, Canvas sends the corresponding LIS role to Kaltura, according to the following mapping:

Canvas role	LIS role
Student	'Learner'
Teacher	'Instructor'
TA	'TeachingAssistant'
Designer	'ContentDeveloper'
Observer	'Observer'

KAF Grants Permissions According to the Mapping

On the KAF Admin Console side, each LIS role can be mapped back to Kaltura roles. KAF grants different permissions according to the mapping provided in the Hosted module in the KAF Admin Console:

The screenshot shows a configuration form with the following fields and annotations:

- ItiRole:** A text input field containing 'Instructor'. A red box highlights this field with the text: 'LIS role sent by Canvas., according to the user's role in Canvas.' A red arrow points from this box to the input field.
- kmsRole:** A dropdown menu showing 'privateOnlyRole'. A red box highlights this dropdown with the text: 'KAF Applicative role'. A red arrow points from this box to the dropdown.
- kmsContextualRole:** A dropdown menu showing 'MANAGER'. A red box highlights this dropdown with the text: 'KAF Contextual role'. A red arrow points from this box to the dropdown.
- allowedSharedRepository:** A dropdown menu showing 'Yes'. A red box highlights this dropdown with the text: 'Set by the administrator to determine whether the user can publish to and from the shared repository'. A red arrow points from this box to the dropdown.

As displayed, each LIS role is mapped in Kaltura to two roles – an **applicative role** (**kmsRole**) and a **contextual role** (**kmsContextualRole**). These roles correspond to different cases/scenarios in Kaltura App for Canvas. Setting these roles changes the capabilities a user has in the following scenarios:

- **Applicative role (KMSRole)** - Defines the user roles and permissions in Kaltura widgets that are out of course context (for example: My Media)
 - **anonymousRole** – Not relevant to the Canvas integration and should not be used.
 - **viewerRole** – The user will not have access to My Media, and will not be able to upload new content to either My Media, Media Gallery or using the Embed Kaltura Media text-editor button.
 - **privateOnlyRole** – The user will have access to My Media and will have the ability to upload new content.
 - **adminRole, unmoderatedAdminRole** – not relevant to the Canvas integration and should not be used.
- **Contextual role (KMScontextualrole)** - Defines the user roles and permission in Kaltura widgets when in a course context (for example: course Media Gallery)
 - **Member:** The user will be able to view content in Media Galleries of courses to which the user is enrolled, but will not be able to contribute (publish) to the galleries.
 - **Contributor:** The user has Member permissions with the ability to publish content to the Media Gallery.
 - **Moderator:** The user has Contributor permissions with the ability to moderate content added to the Media Gallery.

- **Manager:** The user has Moderator permissions with the ability edit the Media Gallery settings, and view the course gallery analytics.

From the Kaltura module’s perspective, the permissions are as follows:

- **My Media**
 - **Applicative role:** If viewerRole, the user will not have access to My Media and will not be able to upload new content. If privateOnlyRole the user will be able to have its own My Media repository to where he can upload his own private content.
 - **Contextual role:** does not impact My Media.
- **Media Gallery**
 - **Applicative role:** If the user has a contextual role that allows publishing/adding content to the Media Gallery (see below), and the user has an Applicative role of **privateOnlyRole**, the user will be able to upload new content or contribute content from its own private My Media repository.
 - **Contextual role:** Determines the role of the user inside the Media Gallery (note – users can access a course Media Gallery after they have access to the course page in Canvas, regardless of their Kaltura role).

Role	Permissions
Member	If the user has Member contextual role, the user will be treated as a “viewer only” in the Media Gallery, and will only be able to view content, and will not be able to contribute content to the Gallery (regardless of the user’s Applicative role).
Contributor	Users with Contributor role can view Media Gallery entries and upload and contribute entries from My Media (if applicative role is privateOnlyRole). Students are usually assigned Member or Contributor contextual roles.
Moderator	Moderator role allows the users to moderate content published to a Media Gallery (and to contribute new content). Teaching Assistants usually have Moderator contextual roles.
Manager	A Manager roles provides full access to the Media Gallery, including the ability to moderate content, edit the Media Gallery’s settings and metadata, and access the Media Gallery Analytics. Instructors usually have Manager contextual roles

- **Embed Kaltura Video** (rich-text editor button)
 - **Applicative role:** If **viewerRole**, the user will not have access to My Media and will not be able to upload new content. If **privateOnlyRole** the user will be able to have their own My Media repository to where they can upload their private content.
 - **Contextual role:** does not impact Embed Kaltura Video.

Common Use Cases of Role Configuration

This section provides recommendations for common role configuration in the Kaltura Video App for Canvas. All configurations are set in the Hosted KAF module in the KAF Admin Console.

Canvas Role	Use case	Kaltura			Allow Shared Repository
		ItiRole	kmsRole	kmsContextualRole	
Student	Allow authoring new content (upload, webcam recording, screencast recording) and allow publishing to course Media Galleries	Learner	privateOnlyRole	CONTRIBUTOR	
Student	Allow viewing content only. Do not allow authoring new content or publishing to course Media Galleries. It is recommended to hide the My Media navigation link on the course menu, so that students will not receive an "Access Denied" screen when trying to access My Media.	Learner	viewerRole	MEMBER	
TA (Teaching Assistant)	Allow to author new content, to contribute to course Media Galleries and to moderate course media galleries.	TeachingAssistant	privateOnlyRole	MODERATOR	
Teacher	Allow	Instructor	privateOnlyRole	MANAGER	

Canvas Role	Use case	Kaltura			Allow Shared Repository
		ItiRole	kmsRole	kmsContextualRole	
	authoring new content, contributing to course Media Galleries and moderating course Media Galleries.				
Designer	Allow authoring new content, contributing to course Media Galleries and moderating course Media Galleries.	ContentDeveloper	privateOnlyRole	MANAGER	
Observer	Only allow viewing.	Observer	viewOnly	MEMBER	
Teacher	Creating a Teachers Only Shared Repository	Instructor	privateOnlyRole	MANAGER	Yes

Summary of Default Canvas -> LIS -> Kaltura Roles Mapping

Canvas role	LIS role	Kaltura applicative role (kmsRole)	Kaltura contextual role (kmsContextualRole)
Student	'Learner'	privateOnlyRole	CONTRIBUTOR
Teacher	'Instructor'	privateOnlyRole	MANAGER
TA	'TeachingAssistant'	privateOnlyRole	MODERATOR
Designer	'ContentDeveloper'	privateOnlyRole	MANAGER
Observer	'Observer'	viewerRole	MEMBER