

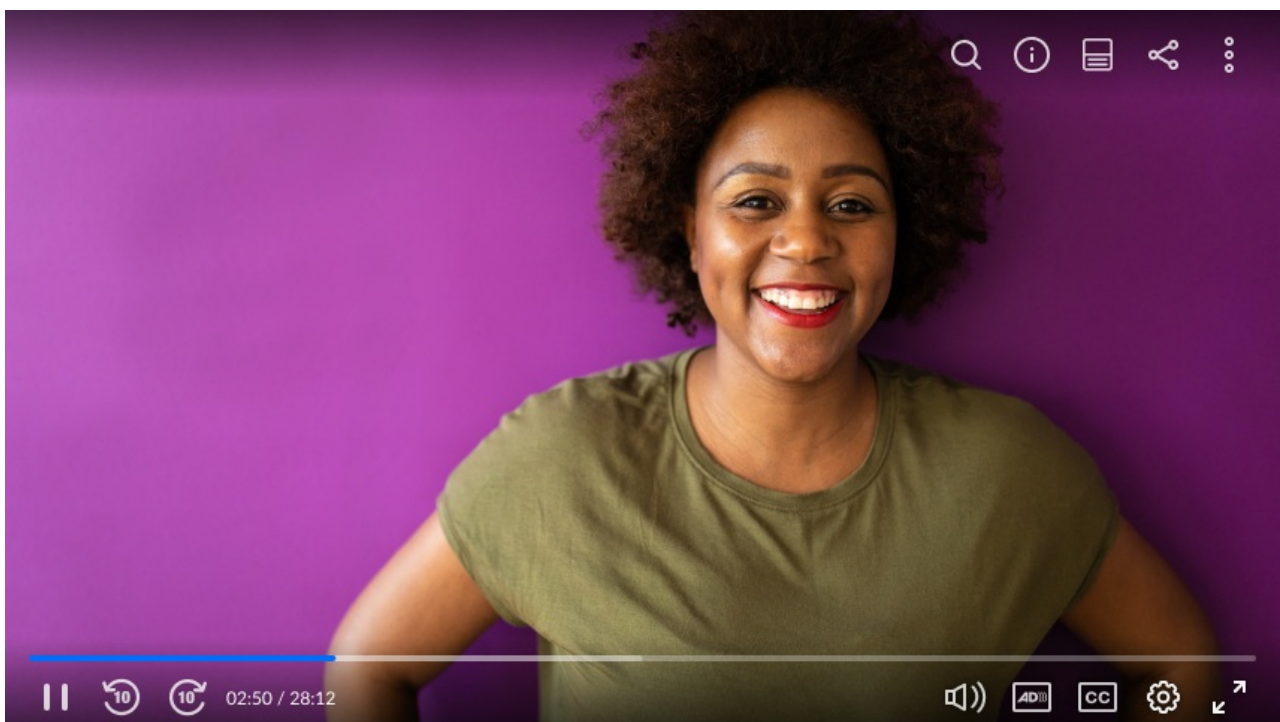
Choose where audio controls appear in the player

Last Modified on 12/21/2025 3:31 pm IST

 This article is designated for administrators.

About

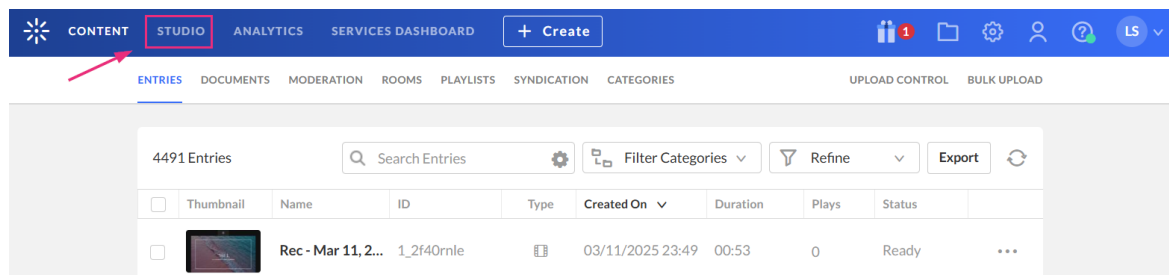
You can decide whether the audio controls are displayed inline in the player control bar or grouped under the settings menu. This flexibility helps you tailor the player interface to your design or accessibility needs.



VOD **REELS**

Access the player settings

1. Log in to your KMC and click the **Studio** tab.

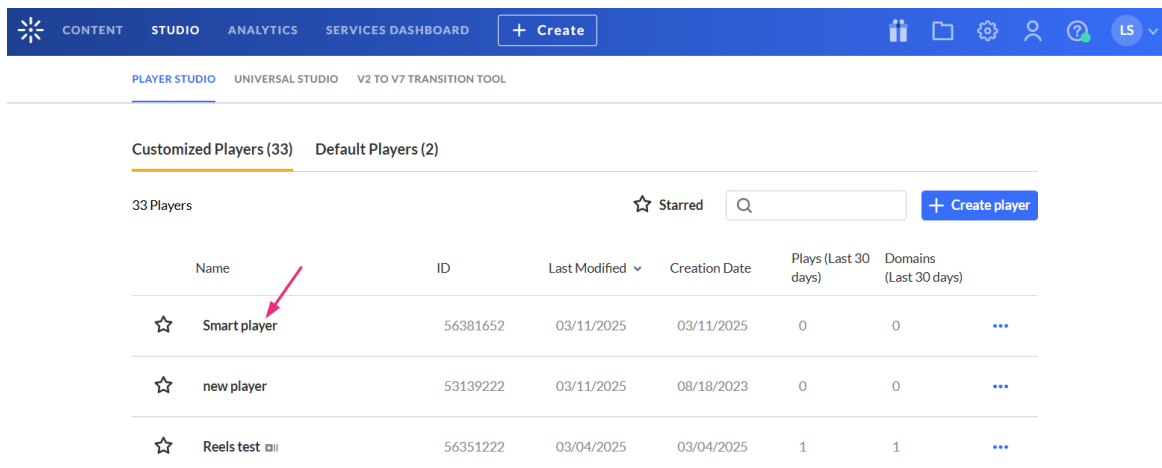


The **Player Studio** page displays.

- Click the player you want to edit from the list (or use the search bar in the top right).



If you haven't created a player yet, check out our article [Create a player](#) for guidance.



The screenshot shows the Kaltura Studio interface. The top navigation bar includes 'CONTENT', 'STUDIO', 'ANALYTICS', and 'SERVICES DASHBOARD', along with a '+ Create' button. Below the navigation bar, the 'PLAYER STUDIO' tab is selected. The main content area displays 'Customized Players (33)' and 'Default Players (2)'. A table lists 33 players, with columns for Name, ID, Last Modified, Creation Date, Plays (Last 30 days), and Domains (Last 30 days). The 'Smart player' is highlighted with a red arrow.

| Name | ID | Last Modified | Creation Date | Plays (Last 30 days) | Domains (Last 30 days) |
|--------------|----------|---------------|---------------|----------------------|------------------------|
| Smart player | 56381652 | 03/11/2025 | 03/11/2025 | 0 | 0 |
| new player | 53139222 | 03/11/2025 | 08/18/2023 | 0 | 0 |
| Reels test | 56351222 | 03/04/2025 | 03/04/2025 | 1 | 1 |

The [player settings](#) display.



The screenshot shows the Kaltura player settings interface. The left sidebar contains a search bar and a list of settings categories: 'PLAYBACK OPTIONS', 'ACCESSIBILITY & LANGUAGE', and 'NAVIGATION & DISCOVERY'. The 'PLAYBACK OPTIONS' section is expanded, showing settings for 'Auto Play', 'Start Playback Muted', 'Auto Pause', 'Fallback to Muted Autoplay', 'Preload', 'See more', 'Localization', 'Captions default display', 'Transcript', 'Extended audio description', 'Apply user preferences', 'Navigation', 'Related', and 'Summary & chapters'. The main content area displays a video player with a play button and a 'Demo video' label.

Set audio control placement in the player

- Scroll down to the Accessibility & Language section and find **Audio**.
- Click the gear icon next to it to open the settings.

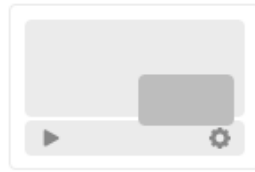
Audio



View options



Inline

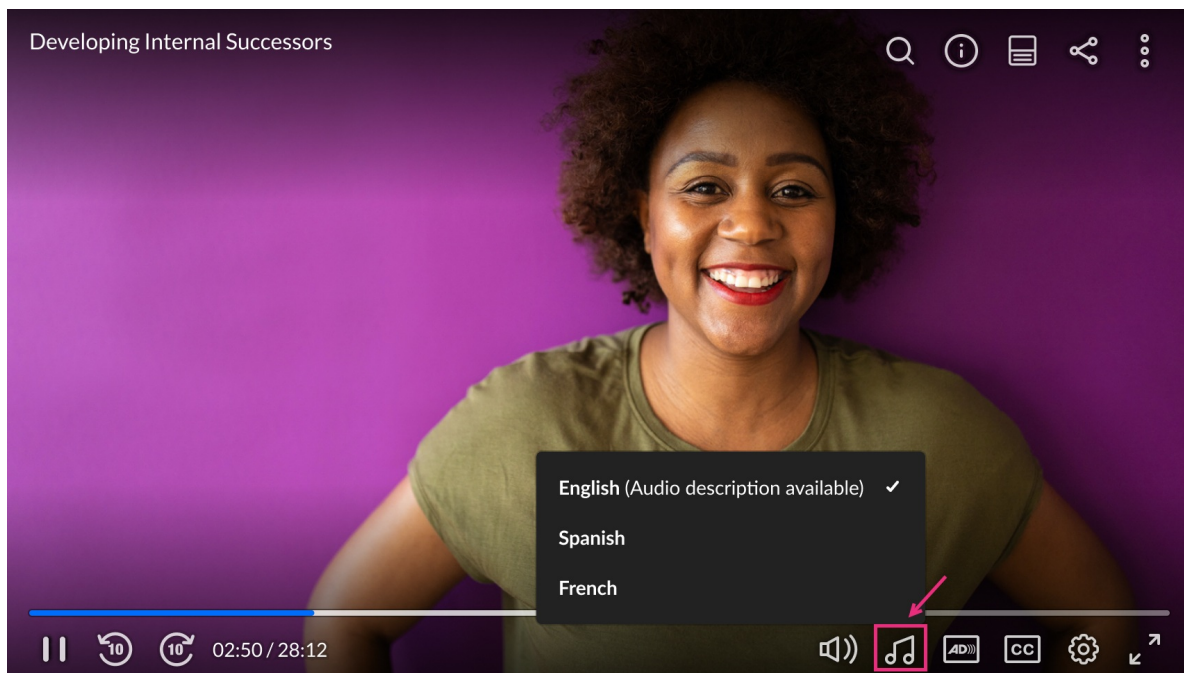


Settings based

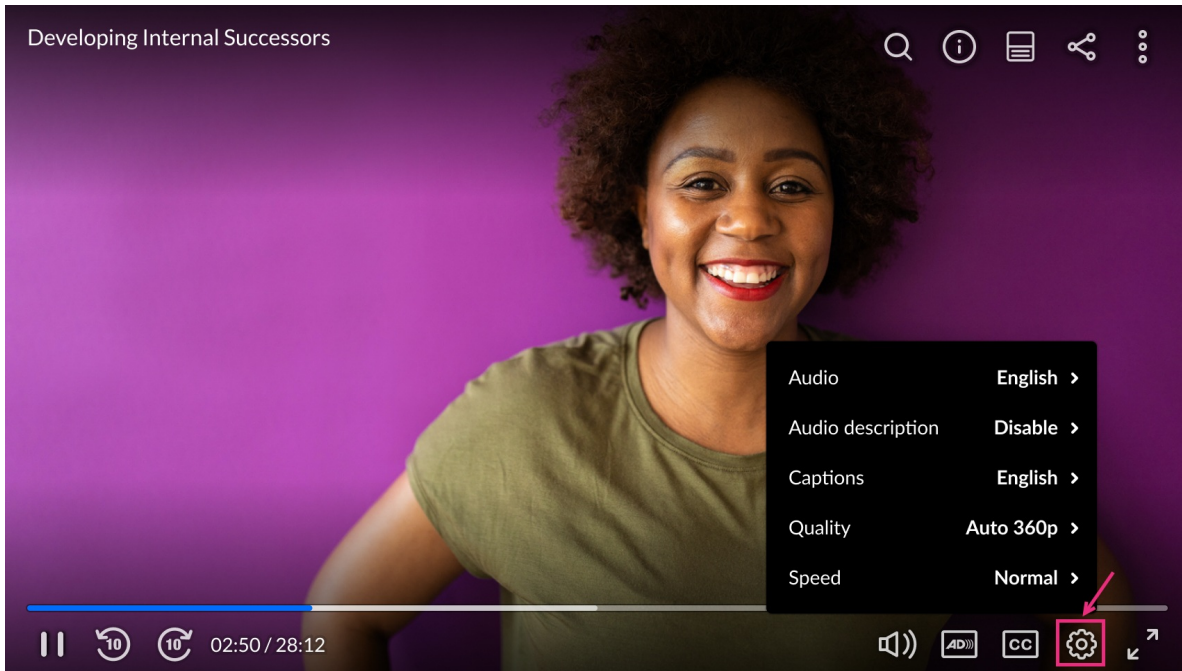
3. Configure the following:

View options - Choose where the audio controls appear - either inline in the player control bar or grouped under the settings menu.

Inline in the player control bar (music icon):



Grouped under the settings menu:



4. Click **Save** at the top right of the settings page.
