

Create a channel playlist in Content Hubs

Last Modified on 04/17/2026 3:11 pm IDT

 This article is designated for all users.

About

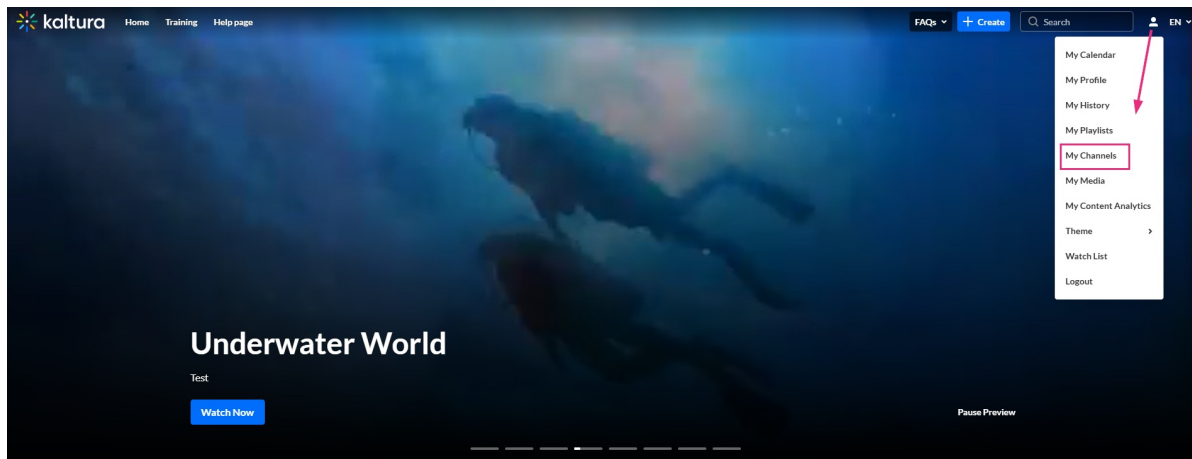
Channel playlists help you organize and highlight content in a channel. Create themed collections using media from [My Media](#) or your channel. Playlists appear in the channel's **Playlists** tab.



- This feature requires the [Channelplaylists module](#) to be enabled.
- Existing playlists may not be added to a channel playlist.
- Channel Managers / Admins (or roles with playlist permissions) can create and manage channel playlists.
- Kaltura Video Quizzes can only be added to a playlist in applications where the main playlist player is set to a **v7 player**.

Access the create playlist page

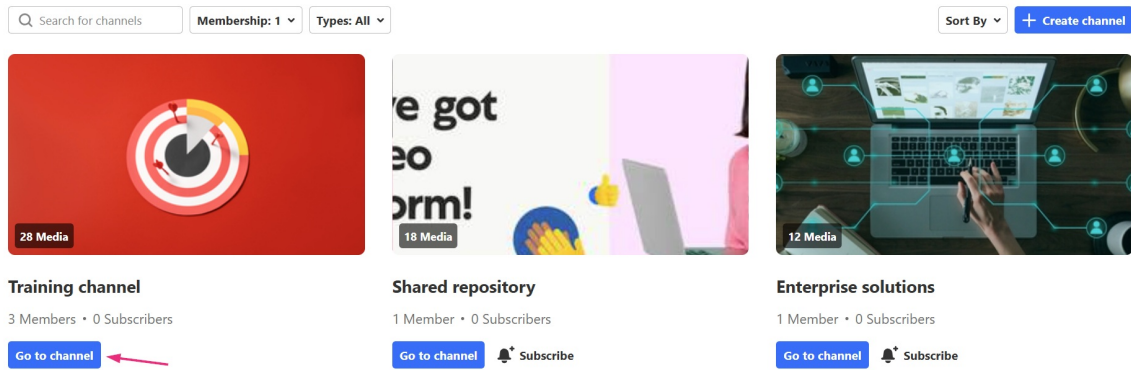
1. From the user menu, select **My Channels**.



The 'Channels' page opens.

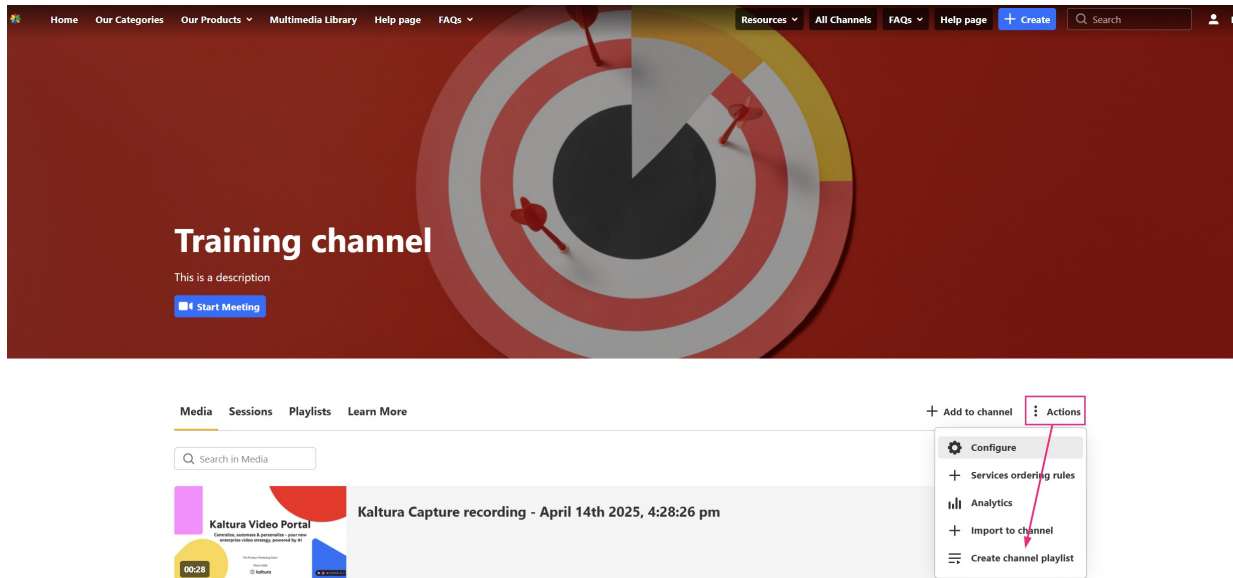
2. Locate the channel you want to add a playlist to and click **Go to channel**.

Channels



The channel page opens.

3. Click **Actions** at the far right and select **Create a channel playlist** from the menu.



The 'Create channel playlist' window opens.

Create channel playlist

Name *

Exploring Essential Generative AI Tools

Description

B *i* U     **A**  

Dive into the realm of innovation with these essential Generative AI tools, poised to revolutionize your creative process. Explore their potential to unlock boundless possibilities and redefine what's achievable.

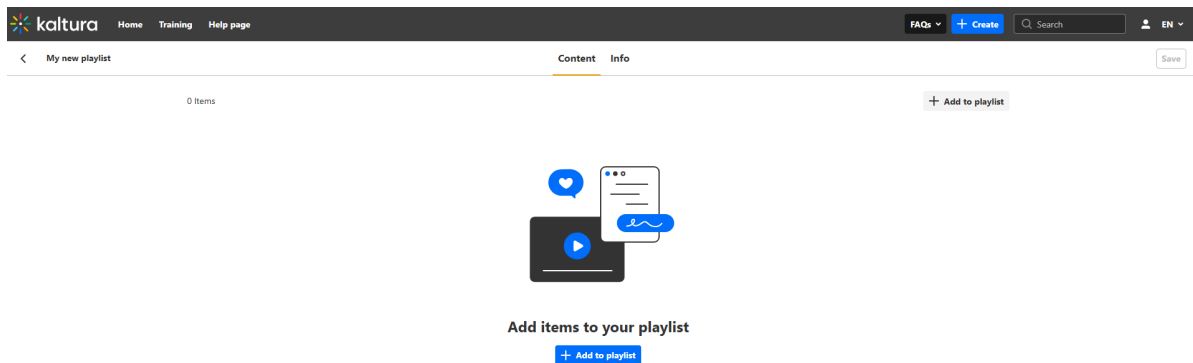
Cancel

Create

4. Enter a name and description.

5. Click **Create**.

You'll be redirected to the edit playlist page to add media and organize your list.

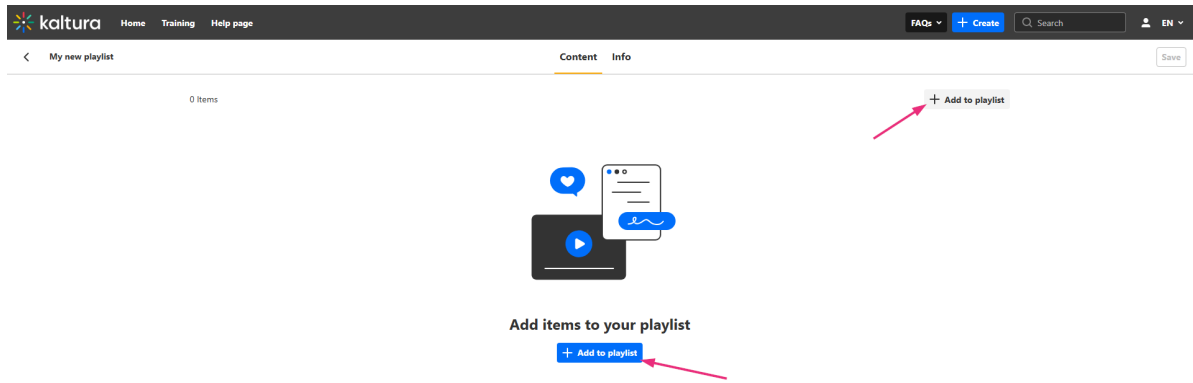


Add items to your playlist

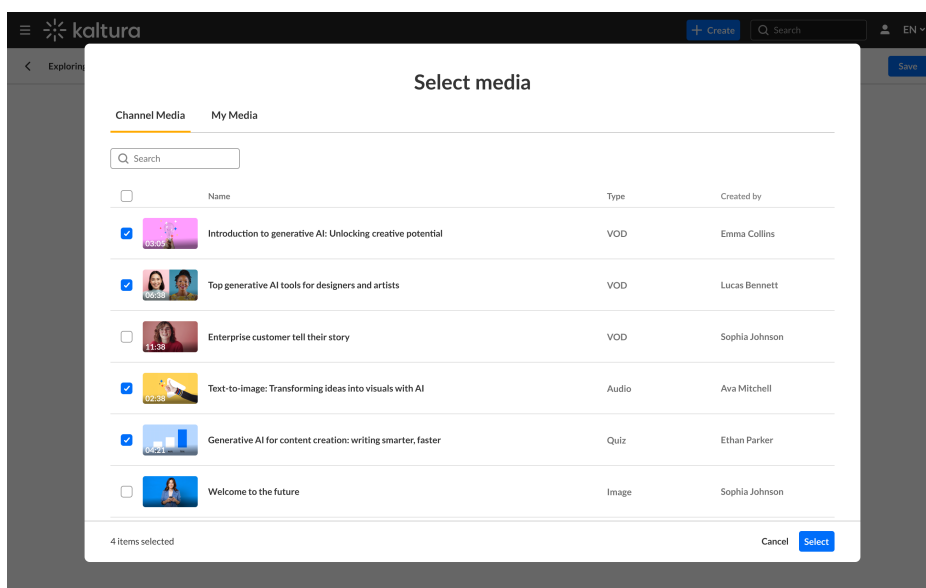


When you add media to a channel playlist, those items are automatically published to the channel (if they weren't already). To add items, you must have co-publisher rights for the channel.

1. Click **Add to playlist** at the top right or center of the page.



The 'Select media' window opens.



2. Check the boxes next to the items you want to add in the tabs:


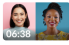

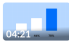
- **Channel Media** - add media from the channel
- **My media** - add media from [My Media](#)

You can use the search function to find the media.

3. Click **Select**.

The playlist **Content** tab displays with all the items you added.

4 Items + Add to playlist

= 1		Introduction to generative AI: Unlocking creative potential VOD • Created by Emma Collins	⊖
= 2		Top generative AI tools for designers and artists Scheduled VOD • Created by Lucas Bennett	⊖
= 3		Text-to-image: Transforming ideas into visuals with AI Audio • Created by Ava Mitchell	⊖
= 4		Generative AI for content creation: writing smarter, faster Quiz • Created by Ethan Parker	⊖

Change order of items

- **Mouse:** Drag the handles (two lines) to the left to move the item.
- **Keyboard:** Tab to the handle → Space/Enter to pick up → ↑/↓ to move → Space/Enter to drop (Esc cancels).

4 Items + Add to playlist

= 1		Kaltura_Capture_recording_-_March_4th_2025_5_14_52_pm_(HD_1080_-_WEB_(H264_4000)) Video • Created by	⊖
= 2		Using AI to boost productivity and efficiency Video • Created by	⊖
= 3		Kaltura MediaSpace Admin Training (Source) Video • Created by	⊖
= 4		Kaltura Capture recording - March 4th 2025, 5:14:52 pm Video • Created by	⊖

Remove items

Click the remove icon next to an item to take it out of the playlist.

= 1		Kaltura_Capture_recording_-_March_4th_2025_5_14_52_pm_(HD_1080_-_WEB_(H264_4000)) Video • Created by	⊖
= 2		Kaltura Capture recording - March 4th 2025, 5:14:52 pm Video • Created by	⊖




Remove

When you're happy with your playlist, click **Save** at the top right.

Playlist thumbnails

- The playlist thumbnail defaults to the first item in the playlist. If you change the order, it updates after you save.
- For an empty playlist, no thumbnail is shown until you add items.



Very large playlists are supported; consider saving periodically when making many changes.