

Set captions to display by default in the player

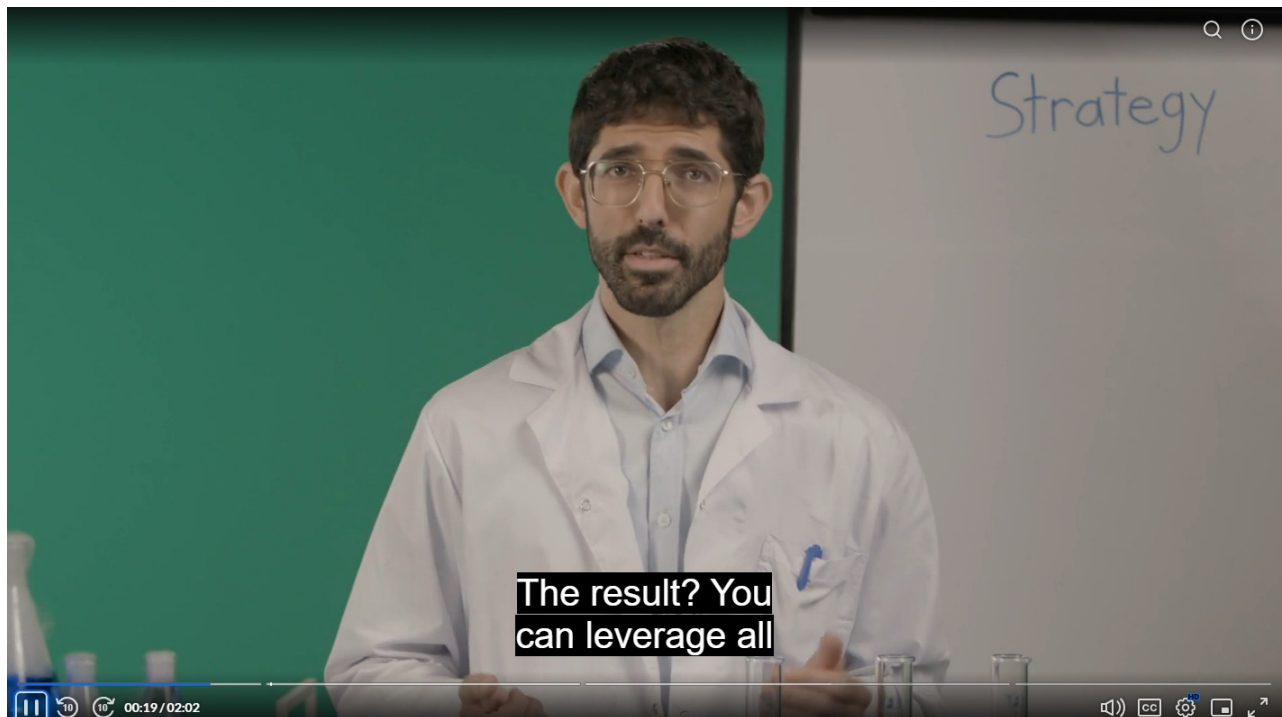
Last Modified on 01/18/2026 2:51 pm IST

 This article is designated for administrators.

About

This article explains how to customize the captions experience in the player. You can control where caption options appear (either directly in the player controls or within the settings menu), decide whether advanced caption settings are available to viewers, and configure captions to display automatically when playback begins.

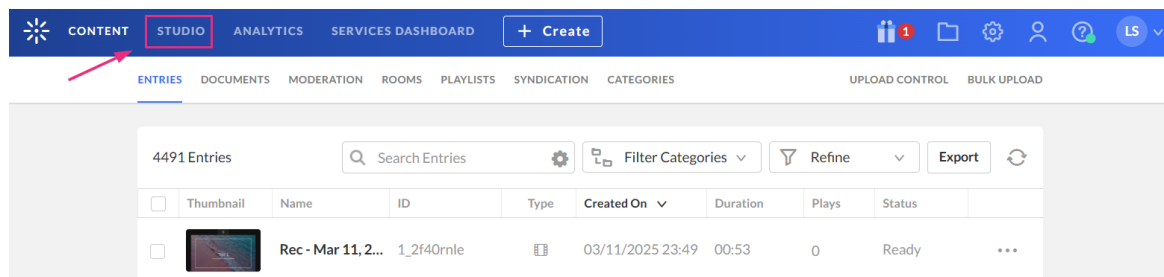
You can also set the default caption language and adjust caption alignment to best fit your content and audience.



VOD **REELS**

Access the player settings

1. Log in to your KMC and click the **Studio** tab.

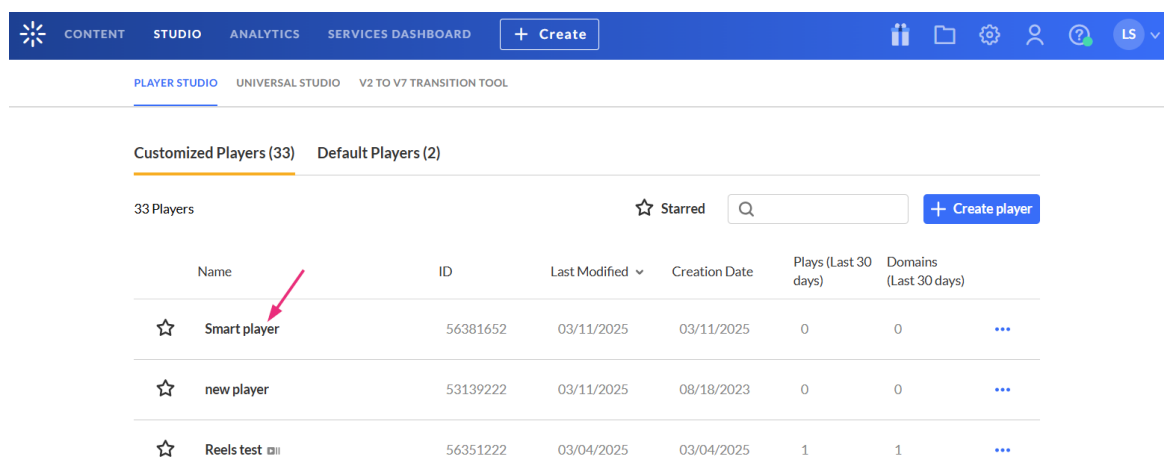


The [Player Studio](#) page displays.

- Click the player you want to edit from the list (or use the search bar in the top right).



If you haven't created a player yet, check out our article [Create a player](#) for guidance.




The [player settings](#) display.




Set captions default display


1. Scroll down to the **Accessibility & Language** section, find **Captions default display** and click the gear icon next to it to open the settings.

Captions default display 

View options



Inline




Settings based


☐ Show advanced caption settings

Default display

☐ Show captions

Default language

☒ Auto 

☐ Manual 

Captions alignment

☒ Default

☐ Left

☐ Center

☐ Right

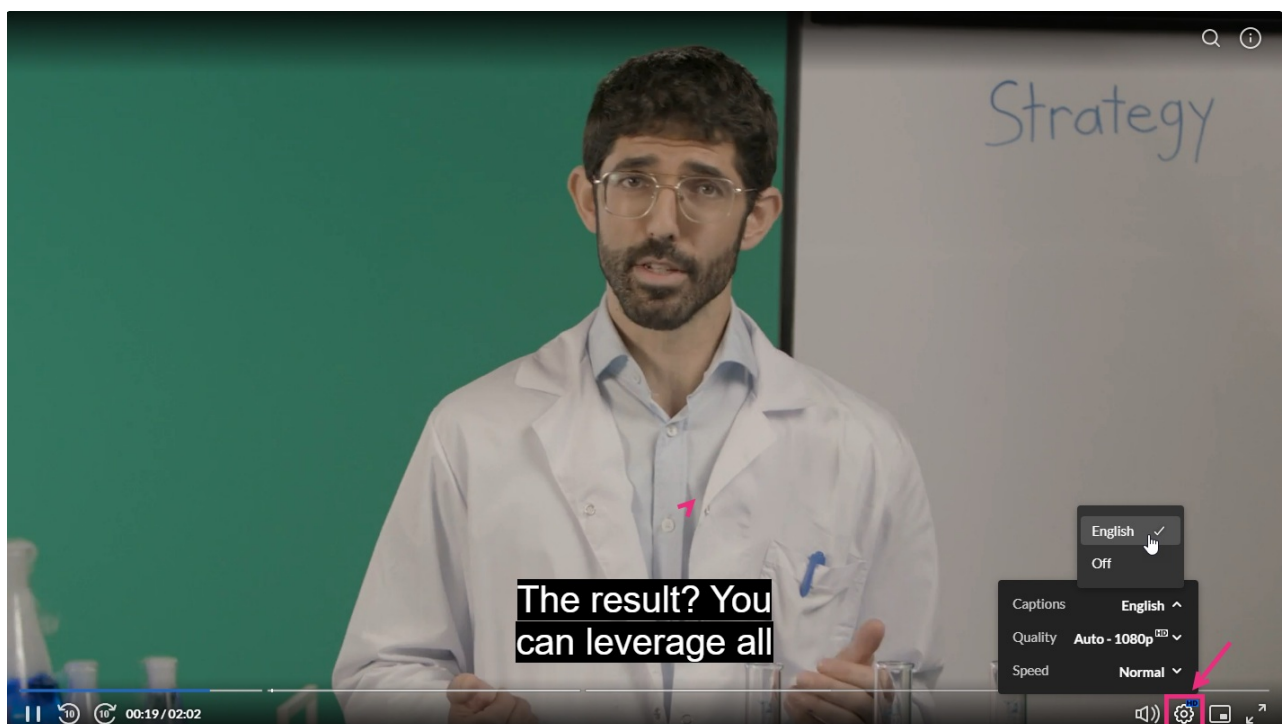
2. Configure the following:

View options - Choose where the captions controls appear - either directly in the player control bar or nested inside the settings menu.

Player control bar (CC button):



Nested inside the settings menu:



Show advanced caption settings - Choose whether advanced caption settings will be available to viewers.

Default display - Set whether captions are shown automatically on video playback.

- **Show captions** - Check the box to display captions by default when the video starts.

Default language - Choose the default captions language - Auto or Manual.

- **Auto** - uses the viewer's preferences (local storage, browser language, or the default language)
- **Manual** - select a language from the drop-down list

Captions alignment - Set default alignment of captions on the player:

- **Default** - captions will be displayed as received without any adjustments to alignment
- **Left** - captions will be aligned to the left
- **Center** - captions will be centered
- **Right** - captions will be aligned to the right

3. Click **Save** at the top right of the settings page.

For the user guide, see [Captions and Audio Tracks](#).
