

Class Genie for Moodle - Admin guide

Last Modified on 07/27/2025 2:58 pm IDT

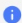
 This article is designated for administrators.

About

Class Genie is Kaltura's AI-powered knowledge assistant, designed to help students and instructors quickly find trusted answers based only on your institution's verified course content.


In an LMS environment, Genie works inside each course's Media Gallery, which may also include sub-categories for embedded course content. When active, a banner appears on the media gallery page and users click **Genie** to open the 'Ask Anything' page.

Media Gallery


 Ask anything about this course's media with **Genie**

[+ Add to media gallery](#) [⋮ Actions](#)


Media



Charters and the Future of Schooling



Kaltura MIT Website Overview



Leo Celi - The Hazard of Human Bias in the Evolution of Computer Imaging - 3 of 5

How Genie uses your course content

Genie only pulls from your institution's verified videos and supported documents stored in your LMS Media Galleries, and does not use any external sources. Genie always respects course entitlements so students only see content they're allowed to access,

for example, two students in different sections may see different answers depending on their permissions. Unlisted or private entries are never included.

Kaltura does not use customer data to train its AI models. To learn more, see [Kaltura's Artificial Intelligence Principles](#). To learn more about LMS video roles and entitlements, see [Video Portal and LMS Video roles and permissions](#).

+ New thread

What percentage of the ocean has never been measured?

I created a series of flashcard summarizing What percentage of the ocean has never been measured?

FLASHCARDS

← 1 / 4 →

INTRODUCTION

Ocean Measurement Coverage and Climate Impact

According to the source materials, more than 95% of the ocean has never been measured. This means scientists have not obtained measurements of temperature, acidity, and pressure - vital indicators for monitoring climate change - from over 95% of the ocean's volume.

Save Share

Like Comment

SOURCES



NEXT STEPS

How does ocean measurement impact climate change models? →

What vital measurements are missing from unexplored ocean areas? →

Why have we only measured 5% of oceans? →

Ask me anything

→

AI-generated content may contain errors or omissions

Content requirements

Genie relies on captions as its main source of information for video and audio entries. Make sure each relevant entry has an English caption file. It's fine to include multiple caption files, but at least one must be in English.

If you use machine-generated captions, consider adding a dictionary to improve

accuracy for domain-specific terms and names. Genie will always use the caption file with the highest accuracy available.

OCR support

When enabled, OCR (Optical Character Recognition) pulls visible text from slides, whiteboards, or other on-screen content to help enrich flashcard results.

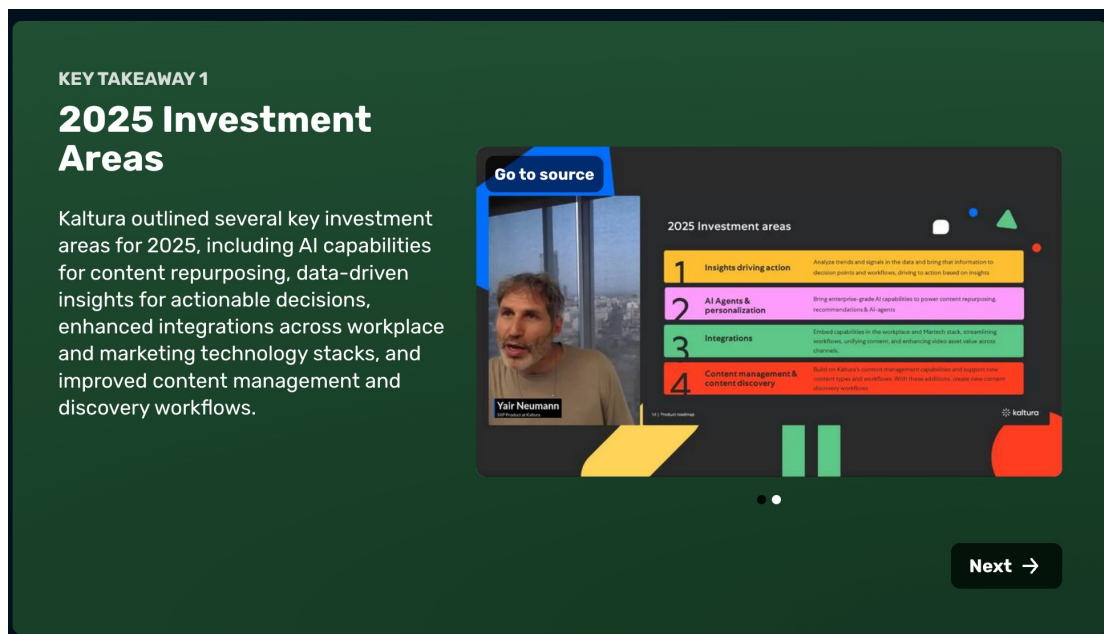
When to use it:

OCR is especially useful for videos with presentation slides, classroom whiteboards, or any other visible on-screen text. To use OCR:

1. Your Kaltura account must have [REACH](#) enabled.
2. OCR must be enabled in the Genie configuration for specific Genie IDs.
3. Videos must have OCR metadata, which is generated by ordering a REACH task.
4. Once processed, the OCR data is automatically added to Genie's database.

What it looks like:

Information from OCR text is integrated in the flashcard summary. If specific OCR results are relevant, a thumbnail preview is shown, with a link to the source entry. These entries also appear in the Sources list, alongside videos and documents.

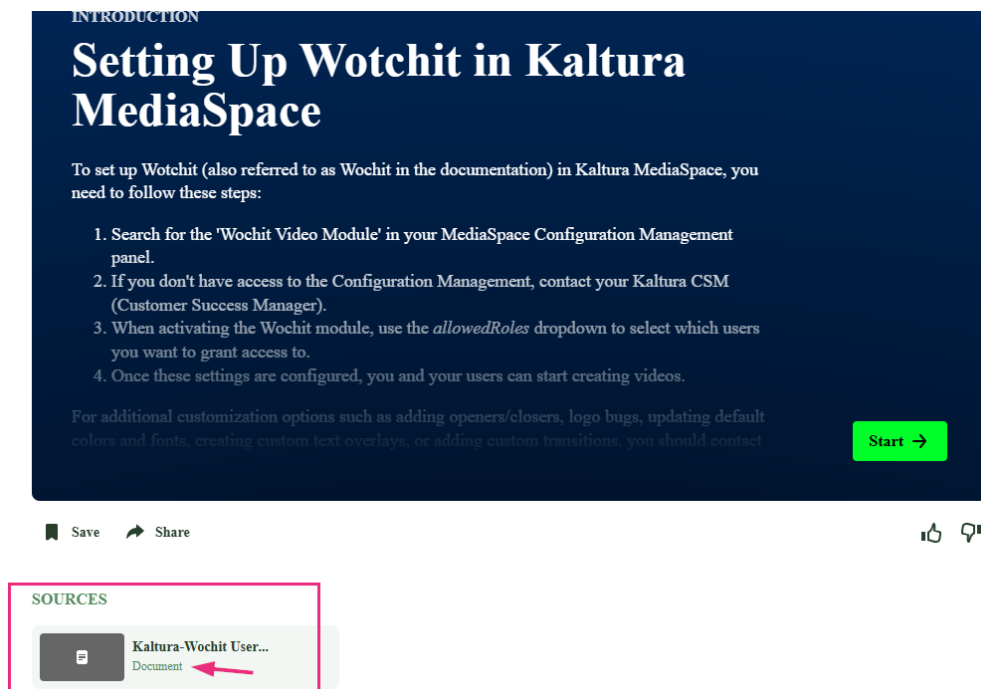


For ordering instructions, see our articles [Order captions](#), [Order captions via KMC](#), and [Order OCR](#).

Document support

Genie also supports document entries, specifically **DOCX**, **PPTX**, and **PDF**, making it less dependent on video content and dramatically expanding its coverage. Content from these documents will appear in Genie results as text summaries and will also be listed in the Sources section, just like videos.

For more information, check out [Document entries](#).



INTRODUCTION

Setting Up Wotchit in Kaltura MediaSpace

To set up Wotchit (also referred to as Wochit in the documentation) in Kaltura MediaSpace, you need to follow these steps:

1. Search for the 'Wotchit Video Module' in your MediaSpace Configuration Management panel.
2. If you don't have access to the Configuration Management, contact your Kaltura CSM (Customer Success Manager).
3. When activating the Wotchit module, use the *allowedRoles* dropdown to select which users you want to grant access to.
4. Once these settings are configured, you and your users can start creating videos.

For additional customization options such as adding openers/closers, logo bugs, updating default colors and fonts, creating custom text overlays, or adding custom transitions, you should contact

Start →

Save Share

SOURCES

Kaltura-Wotchit User...
Document

User access & permissions

Genie strictly follows your existing user access controls - it only shows entries the user has permission to see. You can enable Genie for everyone in a **specific user role**, limit it to a **specific user group**, or allow access for **unauthenticated visitors** on public video portals.

For instructions on setting up roles and groups, see the [Genie module](#).

Analytics

Admins can request a Genie usage report through their Kaltura representative. This report includes:

- all questions asked by users
- the answers they received
- any feedback provided (thumbs up/down and explanations)