

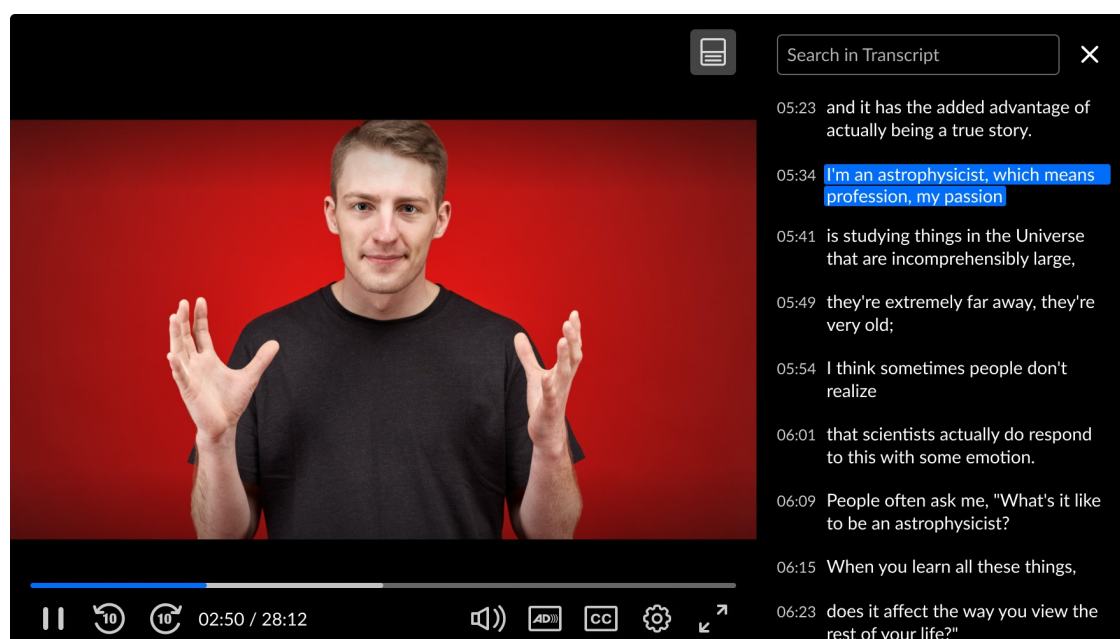
# START HERE: How to upgrade your V2 players to V7 in Kaltura

Last Modified on 08/23/2025 5:23 pm IDT

 This article is designated for all users.

## About

The Kaltura **V7 player** provides better playback across browsers and devices, improved accessibility and keyboard navigation, faster load times, and a refreshed look. It also offers faster video start times, greater stability, and smoother performance.



For a side-by-side look at what's new compared to V2, see [What are the differences between the V2 and V7 players?](#)



Upgrading the player does not alter your video content; it only changes how the content is displayed and interacted with.

## Upgrade methods

There are three ways to make the upgrade, depending on where your players are used:

- **Replace** – Swap out V2 players inside your Kaltura applications (Video Portal or LMS Video application) for V7 players. The browser loads the V7 player directly using its updated URL.

- **Redirect** – Keep existing V2 embed codes on external websites, but have them automatically play with the V7 player. This avoids re-embedding, though some plugins or custom setups may need testing.
- **BSE upgrade** – Convert V2 players embedded via the Browse, Search, and Embed (BSE) tool in third-party LMS/CMS platforms (like Canvas, Moodle, or Adobe Experience Manager) into V7 players.

We know this can sound confusing, but don't worry, you don't need to decide which method to use on your own. Just match your situation to the table below, and we'll point you to the right guide.

## Choose the right method

How are you using the player?	Choose this guide
Your videos are played inside <b>Kaltura applications</b> (like Video Portal or LMS Video application)	<a href="#">Upgrade players from V2 to V7 in your Kaltura application</a> OR <a href="#">Manually replace your V2 players with V7 in your Kaltura application</a>
Your videos were embedded on <b>external websites using Kaltura embed codes</b> (e.g., intranet, blog, marketing site)	<a href="#">Redirect embedded V2 players to V7 on external sites</a>
Your videos were embedded in a third-party LMS or CMS (e.g., Canvas, Moodle, Adobe Experience Manager) using the <b>BSE tool</b>	<a href="#">Upgrade players from V2 to V7 in BSE embeds</a>

Each guide includes an **Important to know** section that explains limitations, caveats, and best practices.