

Genie

Last Modified on 10/01/2025 5:57 pm IDT

⊕ Click here to see the list of release notes

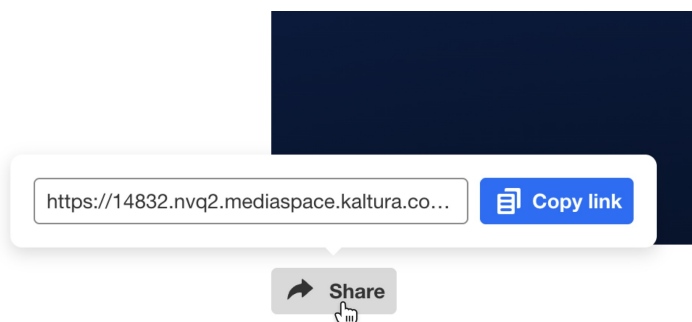
Genie release notes - September 2025

Date released: September 2025

What's new?

Improved sharing functionality

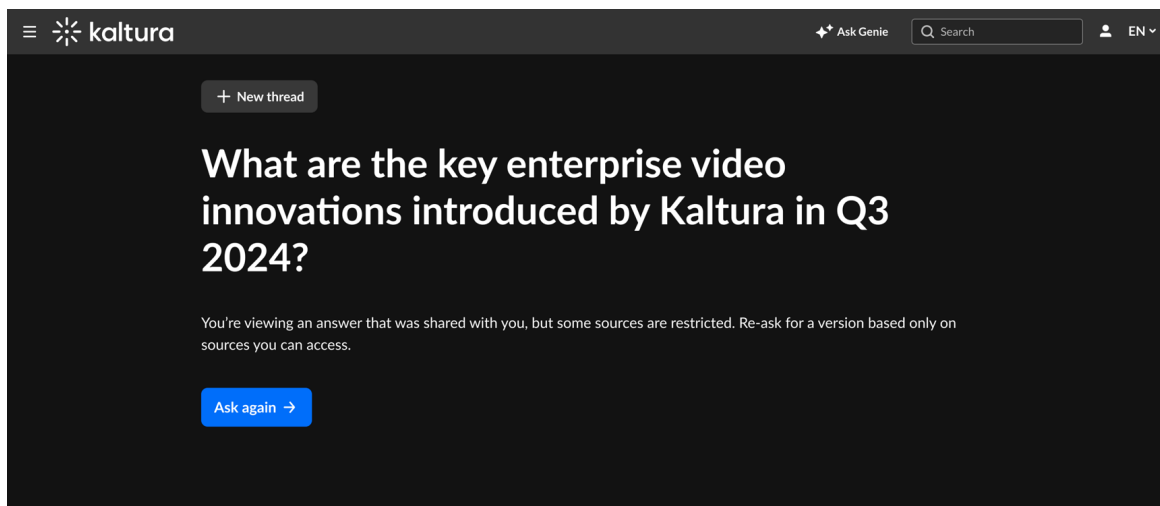
- The sharing functionality is back - and better than ever! When users share Genie's response, it now includes the **exact answer**, even from within a threaded conversation.



- Genie automatically **rewrites the context** of a follow-up question, so that the shared answer makes sense on its own. This ensures shared answers always make sense, even outside the original conversation.

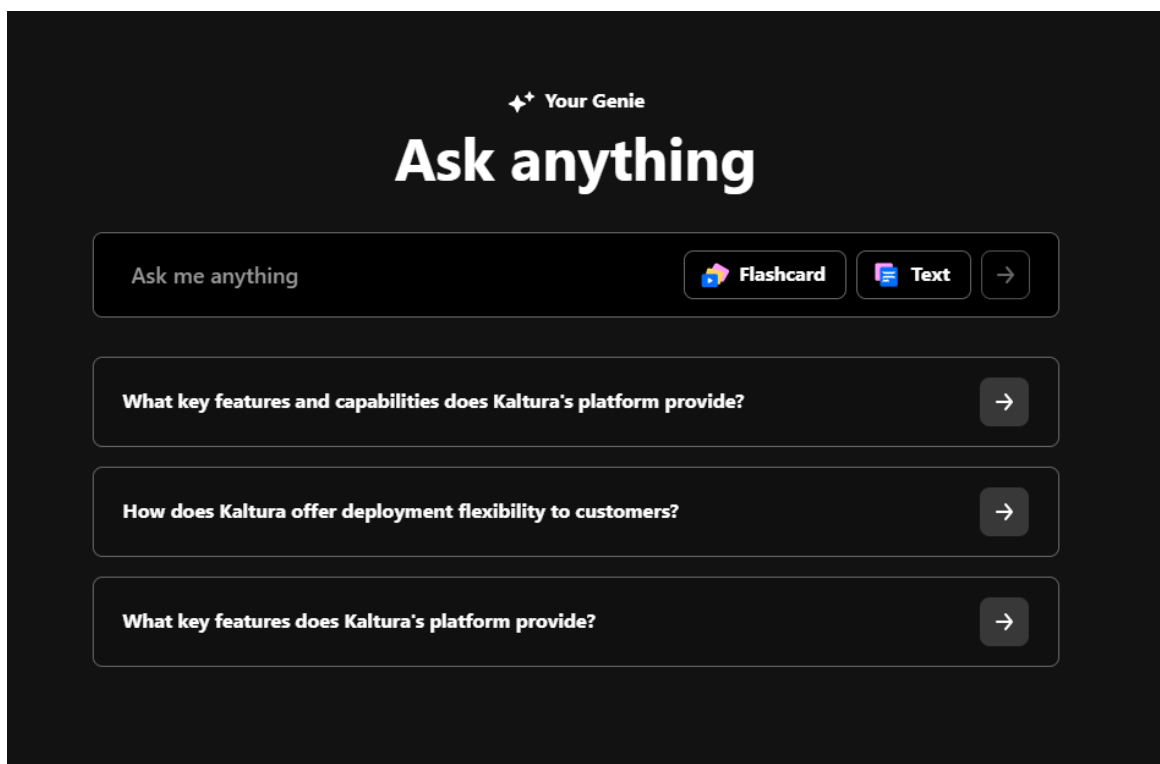
Example:

- **First question:** "What is Content Lab all about?"
- **Follow-up:** "Give me more info on quizzes."
- **Genie rewrites it as:** "Content Lab AI Quiz Generation Features and Workflow" to provide full context.
- When recipients of the shared link don't have access to one or more cited sources in the response, Genie will mention this restriction and offer to **re-answer the same question** using sources available to them.



Choose your answer format

New preset buttons let you choose answer formats without typing instructions. Want a table instead of flashcards? A quick summary instead of a full breakdown? Just click your preferred format and ask your question — Genie will know how to respond.



Glossary & custom prompt (new capability)

We've heard your feedback: Genie needs to be aware of your special terms and use cases that are unique to your organization.

To address this, we're introducing **Glossary and Custom Prompt configuration**.



If you'd like this enabled in your production environment, please contact your Kaltura representative.

Our customers can provide us with:

- General instructions to insert in the custom prompt - this can include overall style, tone and target audience specifications.
- A list of glossary items:
 - **Terms** - internal organizational jargon, terminology, acronyms, etc. No need to include common knowledge terms.
 - **Short descriptions** - a short description of each term to guide and enrich Genie's understanding

Genie will use this information to tailor responses with **customer-specific context**.

This gives organizations full control to make Genie smarter, more accurate, and aligned with your internal language and workflows.

Learn more in our Knowledge Center articles:

- [Introduction to Work Genie](#)
- [Ask Work Genie a question](#)
- [Understand Work Genie's answers](#)

Genie release notes - August 2025

Date released: August 2025

What's new?

Genie got smarter: Next-level question analysis

Genie will deliver faster, more intelligent responses with enhanced question analysis for greater accuracy. Behind the scenes, Genie now better understands the nuance and intent of your questions, leading to more relevant and precise answers.

New formats added: Tables and full-text responses

Beyond flashcards, Genie can now provide full-text answers when appropriate. These responses can include titles, bullet points, paragraphs, and even tables! Genie will automatically select the optimal response format based on what works best for each question.

Can you make a table comparing Amazon and Alibaba?

I'll help you create a comparison table between Amazon and Alibaba. Let me search for relevant information about both companies. Based on the information I found, here's a comparison table between Amazon and Alibaba:

Aspect	Amazon	Alibaba
Business Model	Direct retail + marketplace + cloud services	Pure marketplace platform (no inventory)
Primary Revenue	Product sales, AWS, Prime subscriptions	Commission fees, advertising, subscription fees
Market Focus	Global presence, strong in US/Europe	Dominant in China, expanding globally
Inventory Management	Holds inventory, manages logistics	No inventory, facilitates transactions only
Gross Merchandise Volume (2016)	Part of combined \$485B with eBay	\$485B (more than Amazon + eBay combined)
Profitability	Struggling to break even (as of data period)	\$11B profit with 48% growth projection
Key Platforms	Amazon.com, AWS, Prime	Taobao (C2C), Tmall (B2C), Alibaba.com (B2B)
Payment System	Amazon Pay	Alipay (PayPal equivalent)


Ask me anything



AI-generated content may contain errors or omissions.

Genie got conversational: Threaded experience

You can now ask Genie follow-up questions, and it will build on previous answers within the same thread. This conversational approach enables more iterative dialogue and improves the relevance and accuracy of responses.


Ask anything
All Channels
+ Create

EN

+ New thread

Can you make a table comparing Amazon and Alibaba?

I'll help you create a comparison table between Amazon and Alibaba. Let me search for relevant information about both companies. Based on the information I found, here's a comparison table between Amazon and Alibaba:

Aspect	Amazon	Alibaba
Business Model	Direct retail + marketplace + cloud services	Pure marketplace platform (no inventory)
Primary Revenue	Product sales, AWS, Prime subscriptions	Commission fees, advertising, subscription fees
Market Position	Global leader in Western markets	Dominant in Chinese market
Gross Merchandise Volume (2016)	Part of combined \$485B with eBay	\$485B (more than Amazon + eBay combined)
Profitability	Struggling to break even (as of transcript date)	\$11B profit with 48% growth projection
Inventory Management	Holds inventory, manages logistics	No inventory, no logistics participation

AI-generated content may contain errors or omissions.

Genie speaks your language: Multi-lingual support

Moving beyond English-only responses, Genie will now automatically detect and respond in the language you're asking your question in. The system can draw from multilingual content sources, defaulting to your preferred language but using the most accurate available content regardless of language.

¿Qué permisos se requieren para acceder a las colecciones de canales?

FLASHCARDS

← 1 / 5 →

INTRODUCTION

Permisos para Acceder a las Colecciones de Canales

Los permisos para acceder a las colecciones de canales en Kaltura se configuran a nivel de página y pueden incluir roles aplicativos específicos, usuarios individuales, grupos, o acceso anónimo para invitados.

Start →

KEY TAKEAWAYS

Conf
Perm
Acce

Los adm
decidir c
acceder
colección
selección
aplicativ
desplega
grupos e
páginas d
disponibl
anónimos
la opción

👍 🗨

SOURCES



01:26 How to Associate a Channel to a Channel...



03:09 How To Configure The Channel Collections...



02:00 How to setup users and permissions for...

+3

NEXT STEPS

¿Cómo se configuran los diferentes niveles de permisos para usuarios en un canal específico? →

¿Qué pasos debe seguir un administrador para habilitar el acceso de invitados a una colección de canales? →

¿Cuáles son las diferencias entre los roles de Channel contributor y Channel moderator? →



System interface language switching (UI elements, buttons, error messages) via dropdown is coming soon!

Learn more in our Knowledge Center article [Introduction to Genie](#).

Genie release notes - July 2025

Date Released: July 2025

What's new?

OCR support

Genie now leverages OCR (Optical Character Recognition) technology to extract text from videos, expanding the range of content Genie can recognize and analyze, while enhancing its knowledge on existing content.

When to use it:

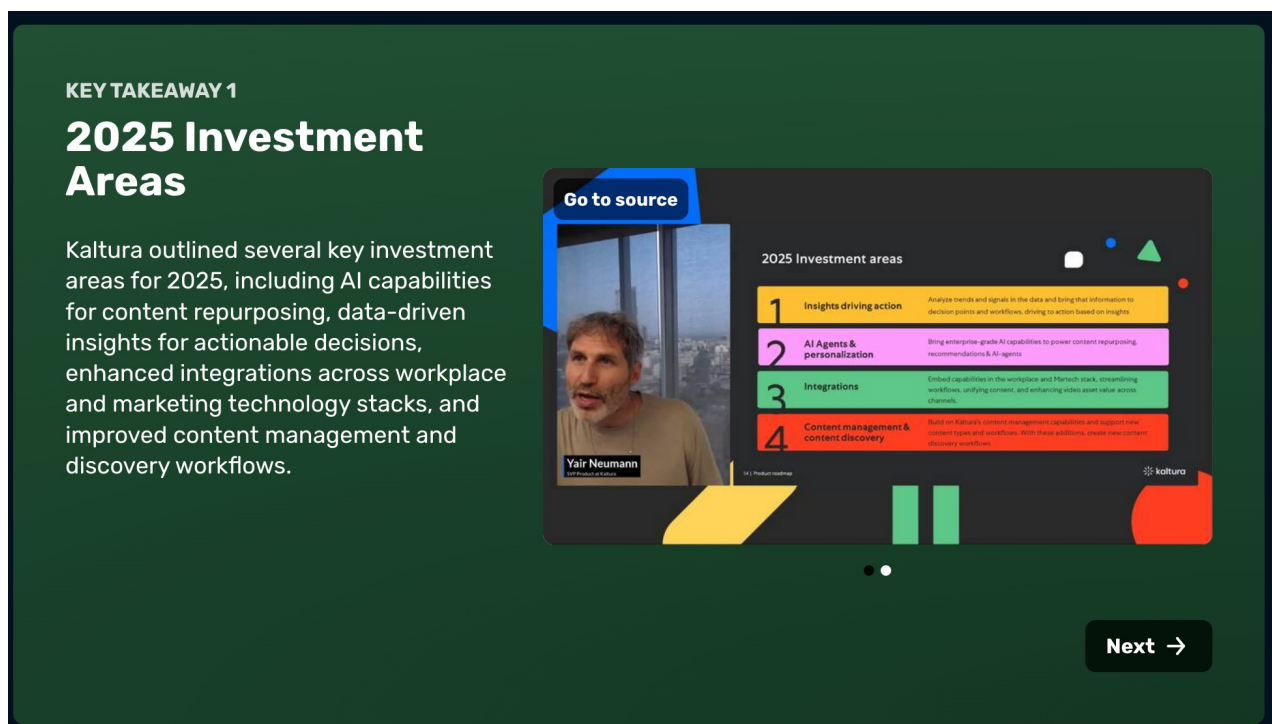
OCR is particularly helpful for videos featuring speakers with presentation slides, classroom recordings showing whiteboards, or any videos with visible on-screen text.

How it works:

1. OCR must be enabled in the Genie configuration for specific Genie IDs.
2. Videos must have OCR metadata, which is generated by ordering a [REACH](#) task.
3. Once processed, the OCR data is automatically added to Genie's database.

What it looks like:

Information from OCR text is integrated in the flashcard summary. If a specific OCR output is relevant, a thumbnail image will be shown with a link to the source entry, which will also appear in the sources list.



See [Kaltura Genie - Admin guide](#) for more information.

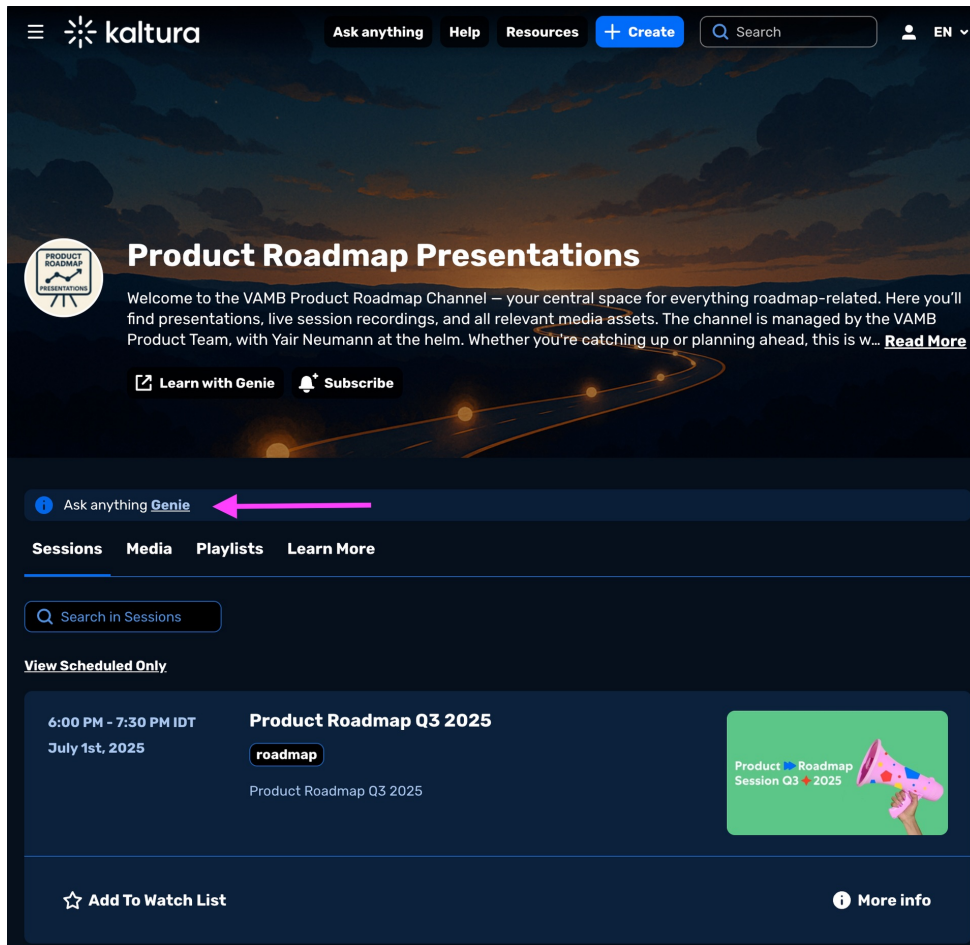
Channel-specific Genie

Admins can now enable Genie at the **channel level** for more contextual answers.

- Choose to enable it for all channels or specific ones.
- A banner on the channel page will link to the channel-specific Genie experience.
- Suggested questions are tailored to match the channel's content



The channel-specific Genie is available in both the legacy and new Video Portal versions.

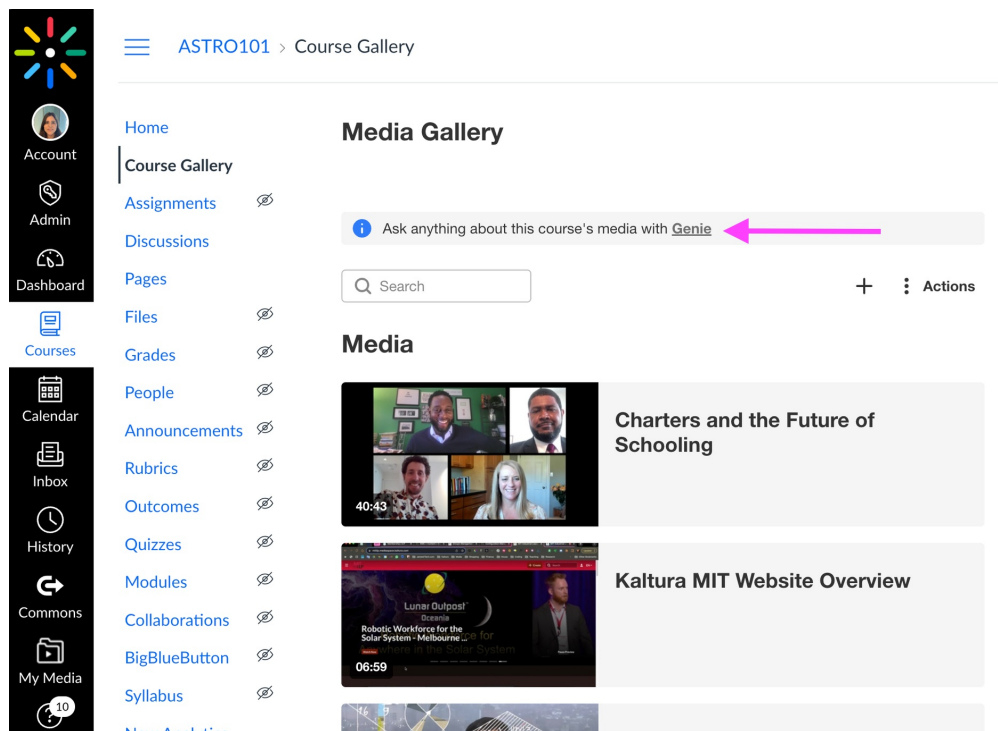


See [Kaltura Genie - Admin guide](#) for more information.

Class Genie

Similar to channel-based Genie, Class Genie can now be configured per course.

- Admins can choose to enable it for all courses or specific ones in an LMS Video instance.
- Context can include just the Media Gallery or also subcategories for embedded course content.



The screenshot shows the Kaltura interface for the course ASTRO101. On the left is a sidebar with navigation links: Home, Course Gallery, Assignments, Discussions, Pages, Files, Grades, People, Announcements, Rubrics, Outcomes, Quizzes, Modules, Collaborations, BigBlueButton, Syllabus, and New Analytics. The main content area is titled 'Media Gallery' and includes a search bar, a '+ Actions' button, and a list of media items. The first item is 'Charters and the Future of Schooling' with a video thumbnail showing four people in a meeting. The second item is 'Kaltura MIT Website Overview' with a video thumbnail showing a presentation slide. A pink arrow points to the 'Ask anything about this course's media with Genie' button at the top of the media list.

See [Class Genie - Admin guide](#) for more information.

Genie on public Video Portal environments

Genie is now available to unauthenticated users in public Video Portal instances. You can enable it via the Configuration Management page in the Genie module. (This option is only available on public Video Portal environments.)

allowedRole	<input type="text" value="Guest Role (unauthenticated)"/>	Roles that are allowed to access genie. Note that setting 'Guest Role' will only work if allowAnonymous is set to 'Yes' in Auth tab. If not, will fall back to unconfirmedViewerRole.
-------------	---	---

See [Kaltura Genie - Admin guide](#) for more information.