

Passcode - Admin Guide

Last Modified on 05/30/2025 5:11 pm IDT

 This article is designated for administrators.

About

This guide will show you how to enable and set up the Passcode module in the Configuration Management section of the video portal. The Passcode module lets end-users protect their entries with a password.



This module is for both Theming and non-Theming users.



This module is designed specifically for VOD entries and does not support live entries.



For technical support, contact Kaltura Customer Care. For all other inquiries, reach out to your Customer Success Manager.

Configure

1. Log into the Configuration Management console by going to your KMS URL and adding */admin* at the end.
2. Enter your Kaltura user ID and password.
3. Click **Sign In**.

The Configuration Management console displays.

MANAGE CONFIGURATION
MANAGE USERS
KNOWLEDGE BASE
CLEAR THE CACHE
GO TO SITE
LOGOUT

Configuration Management

Developer Tools
How to enable "Developer Tools"?
Global
Application
Auth
Categories
Channels
Client
Debug
Gallery
Header
Languages
Metadata
Moderation
Navigation
Player
Security
SharedRepositories
Widgets
Search
MediaCollaboration

Important Notice! (click to open)

Search Configuration

Application

instanceId	1756361.mediaspace.kaltura.com	Unique string to identify that installation of mediaspace. This value can be set during installation only.
privacyContext	MediaSpace	String used to be set as privacy context on root category. This value can be set during installation only.
userRoleProfile	3503841	Metadata Profile ID for user's role per KMS installation instance
title	Kaltura MediaSpace	What is your MediaSpace website title? The website title is displayed in the browser's title bar and usually is displayed in search engine results. Page titles consist of the name of the currently loaded media and the website title. For example, if a page has a video called 'My Video' and 'MediaSpace' is the website title, the page title is: 'My Video - MediaSpace'
footer	MediaSpace™ <a href=http://corp	What is your MediaSpace footer text? default is: MediaSpace video portal by Kaltura
forceIECompatibilityMode	No	Should MediaSpace force IE to use the latest engine when Compatibility Mode is enabled? By default, if compatibility mode is enabled, Internet Explorer renders the page with IE7's engine. Turning on this option forces Internet Explorer to use the latest rendering engine. For more details, please visit this link .
theme		What is the name of your custom MediaSpace theme?

- In the list of configurable items on the left of your screen, locate and click on Passcode. (The item will be crossed out because it's disabled by default.)



If this module is not in your video portal application, please get in touch with your Kaltura representative to inquire about adding it.

The Passcode window displays.

Configuration Management

Server Tools
Backup Configuration
Player replacement tool
Global
Application
AddNew
Auth
Categories
Channels
Client
Debug
EmailService
EmailTemplates
Gallery
Header
Languages
Login
MediaCollaboration
Metadata
Moderation
My-media
Navigation
Player
PlaylistPage
Recaptcha
Search
Security

Search Configuration

Passcode

Module Info

name	Passcode
description	Module to protect entries by password
version	2.0.0

enabled
No
Enable the Passcode module.

passcodeAllowedUsers
Select users who are allowed to set passcodes

1
DELETE
user
kaltura-admin@kaltura.com
Select Users / Groups

+ Add "passcodeAllowedUsers"

Save

The **Module Info** box displays the module name, description (what enabling this module allows users to do), and version number.

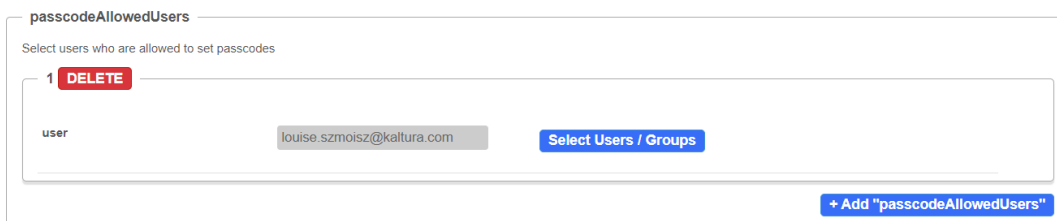
- Configure the following:

enabled - Set to **Yes** to enable the module.

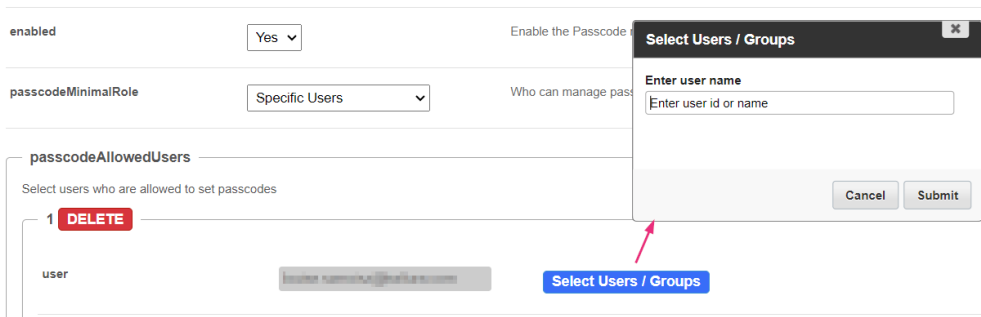
passcodeMinimalRole - Choose the user roles that are allowed to manage passcode protection of the entry. The options are as follows:

- privateOnlyRole
- adminRole
- unmoderatedAdminRole
- Specified Users

If you choose specified users, an additional section displays. This is where you set users who are allowed to set passcodes:



1. Click **+Add "passcodeAllowedUsers"**.
2. Click **Select Users / Groups**.



3. Enter user ID or name.
4. Click **Submit**.

passcodeActionLabel - Type in a label for passcode settings action. You can change the default text by typing in the text field.

passcodeSetTitle - Type in a title for the set passcode field. You can change the default text by typing in the text field.

passcodeSetField - Type in placeholder text for passcode input. You can change the default text by typing in the text field.

passcodeEndUserPromptHeader - This is the passcode header the end-user will

see. You can change the default text by typing in the text field.

passcodeEndUserPromptInstructions - These are additional instructions the end-user will see. You can change the default text by typing in the text field.

passcodeEndUserPromptField - This is the field name the end-user will see. You can change the default text by typing in the text field.

passcodeUnsetDialogTitle - This is the title for the 'change password' prompt the end-user will see. You can change the default text by typing in the text field.

passcodeChangeDialogMessage - This is the message for changing passcode the end-user will see. You can change the default text by typing in the text field.

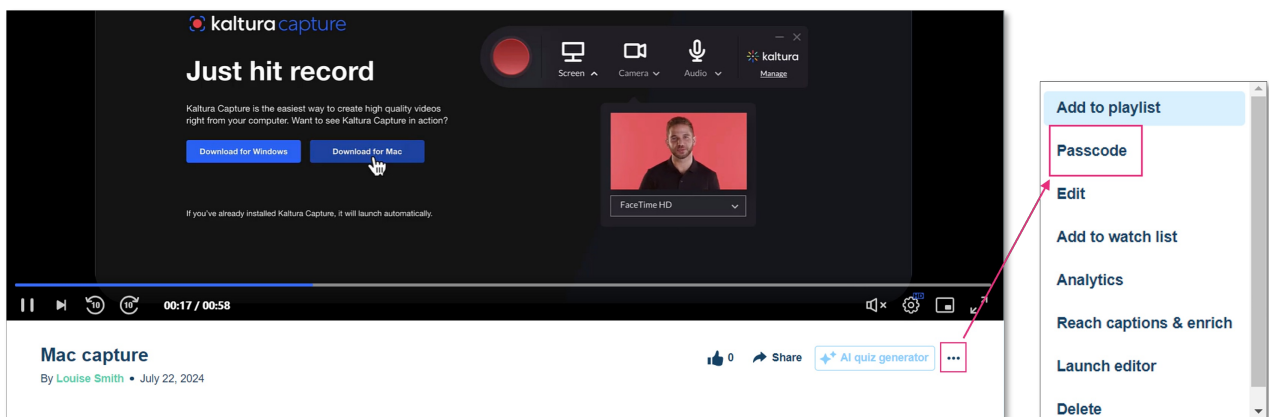
6. Click **Save**.

You receive a notice that your configuration for Passcode was saved and the cache was cleared.

User experience

Theming users

Once enabled and configured, the passcode option appears in the **three dots menu** on the media page for the end user.



When unauthorized users try to access media protected by a passcode, they'll see the following screen:

The media owner made this entry passcode protected

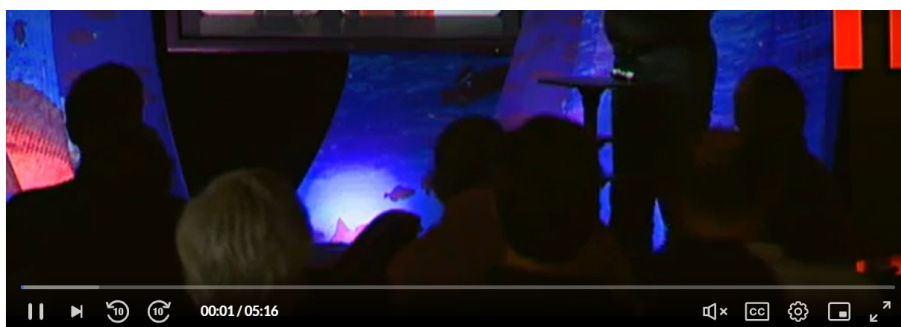
Please provide your passcode:

Passcode

Unlock content

Non-Theming users

Once enabled and configured, the passcode option appears in the **Actions menu** on the media page for the end user.



Kaltura Learning.mp4

0 0 0 0

From Louise Smith July 22, 2024

Details Share Q

Link to Media Page AICC Embed Embed Email

https://4834032.mediaspace.kaltura.com/aicc/embed/1_ppcom8vc

Download AICC wrapper

ACTIONS ▾

- Edit
- Publish
- Add to playlist
- Audit Trail
- Analytics
- Add to Watch List
- Passcode Settings**
- + Caption & Enrich
- Import this video into Powtoon
- Launch Editor
- Delete

When unauthorized users try to access media protected by a passcode, they'll see the following screen:

The media owner made this entry passcode protected

Please provide your passcode:

Enter passcode

Submit



This document is maintained by Kaltura's Professional Services team. Please send comments or corrections to your Customer Success Manager. Ask them to forward it to the Professional Services team. We are committed to improving our documentation and your feedback is appreciated.
