

# Step-by-step instructions for migrating to Player V7


Last Modified on 09/16/2024 12:19 pm IDT

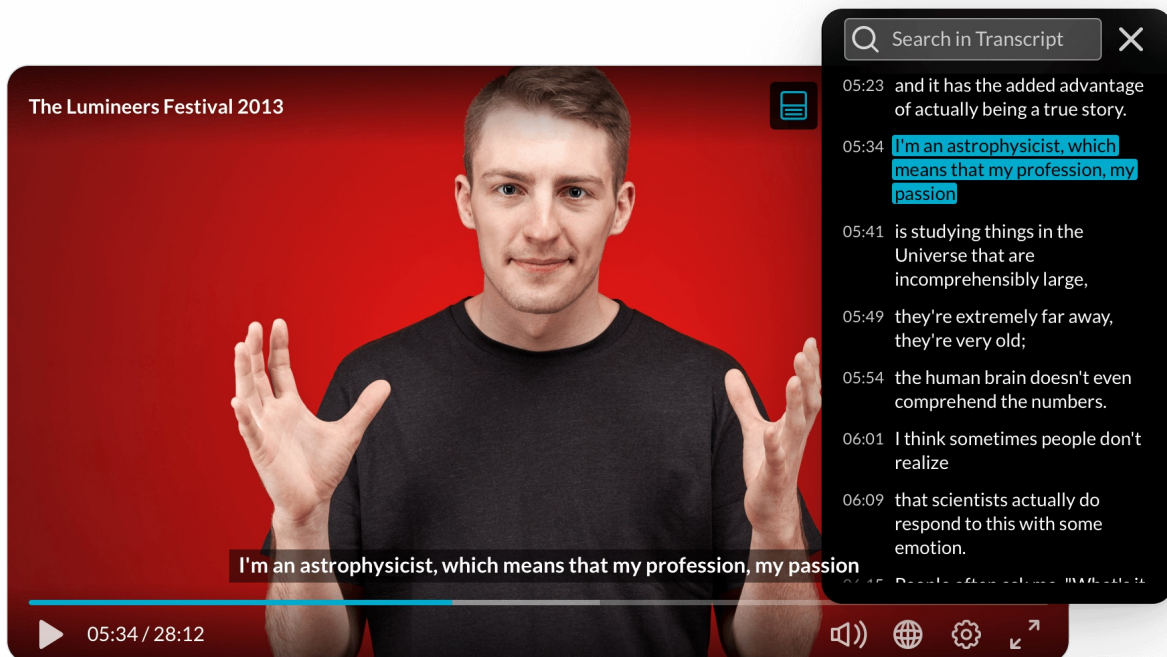
 This article is designated for administrators.

## About

Welcome to the step-by-step migration guide for the new Kaltura Player V7!

Introduced in January 2023, our upgraded Kaltura Player and Kaltura Studio are your all-in-one solution for a superior streaming experience. As you embark on your migration journey to [Player V7](#), take a moment to discover why this player is the perfect companion for your content.

 Kaltura will provide technical support and maintenance for Player V2 until December 31, 2024. We recommend transitioning to Player V7 as soon as possible to continue enjoying the latest features and support.



## Enhanced video player

Designed with both administrators and viewers in mind, the new Kaltura Player V7 offers a sleek, intuitive interface that ensures a beautiful viewing experience. With a focus on performance, users can expect faster 'playback join times', increased stability,

and a smooth, seamless experience.

To learn more, see [Introduction to the Kaltura Player](#).

### **Innovative player studio**

The new Player Studio complements the Kaltura Player, enabling you to create and customize players in minutes. It includes highly requested features such as player usage analytics, bookmarking favorite players, and advanced plugin customization out of the box. Whether your audience is on-the-go, at the office, or at home, these tools help you deliver the ultimate viewing experience.

To learn more, see [Introduction to the Player Studio](#).

### **Feature-rich player comparison**

Curious about the improvements? Check out our side-by-side comparison of Player V2 and the latest Player V7, showcasing popular plugins like quizzes, transcriptions, and hot spots.

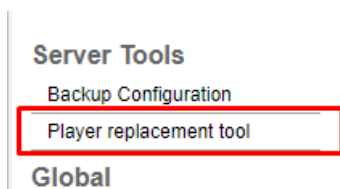
To learn more, see [What are the differences between the V2 and V7 players?](#)

### **Step-by-step guide**

We understand that transitioning to a new system can be daunting, but rest assured, we're here to walk you through it step by step. Our goal is to make this process as smooth and seamless as possible. In this guide, you'll find detailed instructions and helpful tips to ensure a successful migration. Let's get started on this exciting journey together!

#### **Step 1 - Find your default players**

1. Log into your KMS/KAF admin page at .
2. Under **Server Tools**, select **Player replacement tool**.



3. The **Replace player** page opens. Here you'll find all the used players in your Kaltura application. You can select **Download current players list** to download the list to your desktop.

#### **Step 2 - Decide which player to migrate to**

The **Replace Player** page enables you to replace the players in your application with the latest player version. At your disposal, a dedicated V7 system player was created for you (ID: xxxxxxxx) OR you can choose any custom V7 player ID.


**Option A** - Use the new V7 player that was created for you!

The dedicated V7 player (ID: xxxxxxxx) can be found in the Player Studio. Click [here](#) to go to the Player Studio.

**Option B** - If you want to create and customize a new player, you can easily do this in the Player Studio as before. To quickly get a new player up and running, you can get started with [Create a player](#) or simply click [here](#) to go to the Player Studio.

### Step 3 - Update your KMS and KAF players

Use the **Player V7 Replacement Tool** to seamlessly modify your KMS and KAF applications to the new Player V7. To learn more, see [KMS and KAF player V7 replacement tool](#).

 The following pertains to KAF administrators only.

### Step 4 - Find your default BSE player

1. Log in to your KAF admin page.
2. Navigate to the [Browseandembed](#) module.
3. Select '[this tool](#)' from the **Module info** section to launch the BSE Player V7 upgrade tool.

**Module Info**

Info

- The 'Browseandembed' module control the way users can use the Browse, Search & Embed (BSE) tool.
- Please make sure players are set. We recommend to make sure the 'BSEPlayerId' field is filled up.
- Note that depending on the LMS/CMS used, the feature set might be different. To read more, please see the [BSE documentation](#).
- If you need to upgrade your BSE players from V2 to V7 Kaltura player, please use [this tool](#).

4. Find your default **BSEPlayerId** (Player V2) configured in your [Browseandembed](#) module.

BSEPlayerId

The Player ID for the player used by BSE. Media types other than 'video' will load with players set in the dedicated modules (e.g. audioEntry, imageEntry, Quiz, kwebcast). If left empty, the BSE Player will become the default. If the BSE Player is also empty, KAF main player will be used.


5. Paste it in the **Player ID to Upgrade** field.

Enter a BSE player ID to upgrade

Select player configuration

Default player (ID: 51895572) ⓘ

Custom ⓘ



## Step 5 - Decide which player to migrate to

The **Upgrade Player** tool enables you to replace the players in your application with the latest version. At your disposal, a dedicated V7 system player was created for you (ID: xxxxxxxx) OR you can choose any custom V7 player ID.

**Option A** - Use the new V7 player that was created for you!

The dedicated V7 player (ID: xxxxxxxx) can be found in the Player Studio. Click [here](#) to go to the Player Studio.

**Option B** - If you want to create and customize a new player, you can easily do this in the Player Studio as before. To quickly get a new player up and running, you can get started with [Create a player](#) or simply click [here](#) to go to the Player Studio.

## Step 6 - Update your LMS embeds

Use the **BSE Player V7 upgrade tool** to upgrade your BSE players to the new Player V7. Upgrading your players using this tool will seamlessly update your existing embedded videos in your LMS courses' announcements, assignments, discussions, and more.

To learn more, see [BSE player V7 upgrade tool](#).

That's it! You're ready to enjoy the best viewing experience!

