

Content distribution in Video portal

Last Modified on 08/05/2025 10:57 am IDT

 This article is designated for all users.

Ready to amplify your content reach? Effortlessly distribute it using Kaltura's Distribution service, directly from your video portal.

Get ready

1. Access the Edit Media Page.
2. Click on the **Distribution** tab.



The [Distribution module](#) must be enabled to use this feature. If the **Distribution tab** is not visible on your site, please reach out to your administrator for assistance in enabling it.

Dog at beach



Basic Info

Creator: Louise Szmoisz
 Owner: Louise Szmoisz
 Media Entry ID: 1_wb4adolt
 Media Type: Video
 Publish Status: Published
 Creation date:
 August 23, 2023 10:34 AM Asia/Jerusalem
 Update date:
 September 29, 2023 10:34 AM Asia/Jerusalem
 Media asset update date:
 August 23, 2023 10:34 AM Asia/Jerusalem

[Launch Editor](#)

[Details](#) [Languages](#) [Publish](#) [Options](#) [Collaboration](#) [Thumbnails](#) [Presenters](#) [Downloads](#) **[Distribution](#)** [Captions](#) [Attachments](#) [Timeline](#) [Replace Media](#) [Display](#)

Registration

Name:
(Required)

Dog at beach

The Distribution settings displays.

Registration				
Distributor	Start Date	End Date	Submission Status	Action Available
YouTube Distribution Demo			Ready for Distribution	<button>Distribute</button>
Facebook			Ready for Distribution	<button>Distribute</button>

 Refresh

3. Click on the desired distribution profile.



To customize distribution profiles, reach out to your administrator.

Distributor

YouTube Distribution Demo 

Facebook

The distribution details page displays.

Edit Entry - Dog at beach - YouTube Distribution Demo Details

Status: Ready for Distribution

Remote ID:

Start Date: 08/23/2023 10:34am

End Date:

Metadata Details

Name: Dog at beach

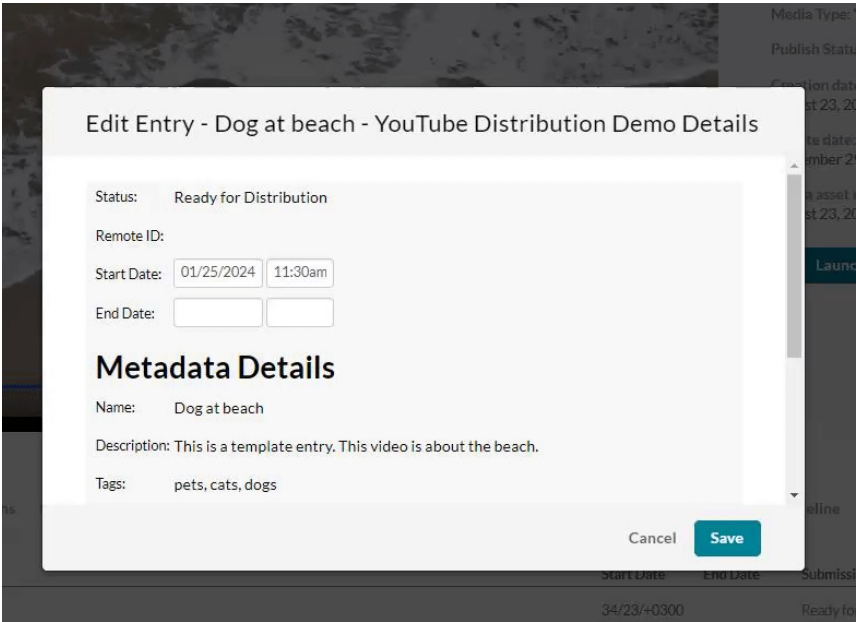
Description: This is a template entry. This video is about the beach.

Tags: pets, cats, dogs

Cancel

Save

4. Set the **start** and **end** dates and times.




5. Click **Save**.

Distribute

When the content is ready to be distributed, the **Submission Status** displays 'Ready for Distribution'.

Distributor	Start Date	End Date	Submission Status	Action Available
YouTube Distribution Demo	30/25/+0200	45/25/+0200	Ready for Distribution	 <button>Distribute</button>

Click **Distribute**.

Distributor	Start Date	End Date	Submission Status	Action Available
YouTube Distribution Demo	30/25/+0200	45/25/+0200	Ready for Distribution	 <button>Distribute</button>
Facebook			Ready for Distribution	<button>Distribute</button>

The Submission Status changes to 'Distributing'.

Distributor	Start Date	End Date	Submission Status	Action Available
YouTube Distribution Demo	30/25/+0200	45/25/+0200	Distributing	

View on site

While the content is being distributed, a Remote ID is created in the distribution profile.

Edit Entry - Dog at beach - YouTube Distribution Demo Details

Status: Distributing

Remote ID: gcb0mMYa-Kw

Start Date: 01/25/2024 6:30pm

End Date: 01/25/2024 6:45pm

Metadata Details

Name: Dog at beach

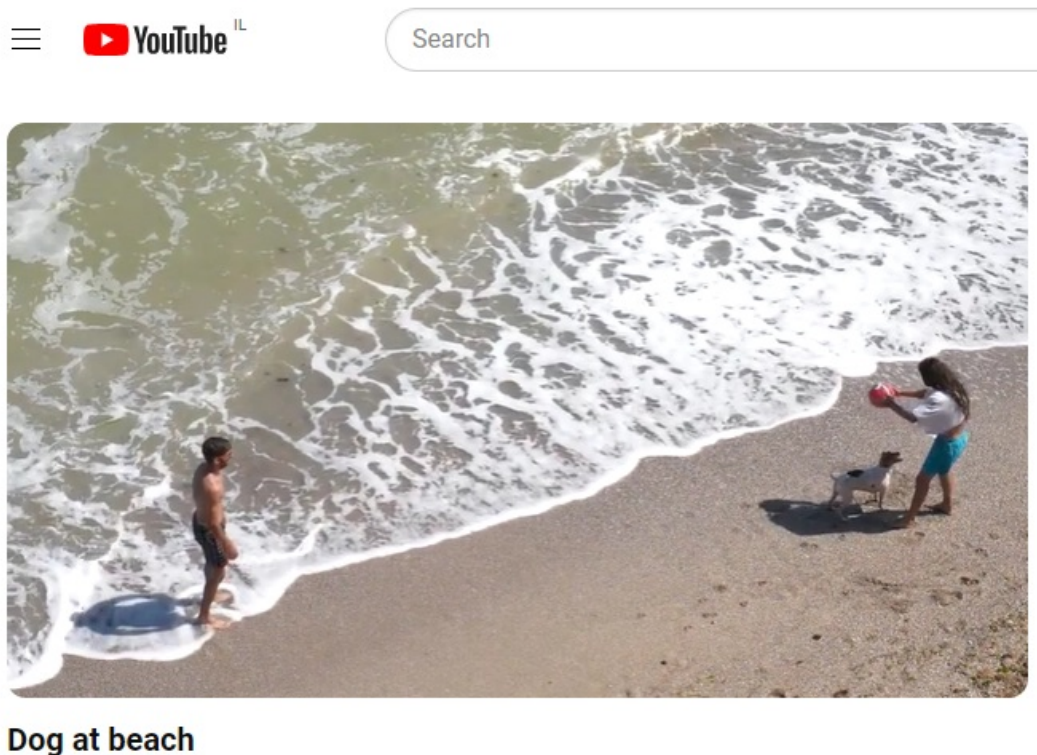
Description: This is a template entry. This video is about the beach.

Tags: pets, cats, dogs

Cancel Save

Copy the Remote ID and paste it into the distributor's site to see a preview of the entry.

Entry that has been distributed to YouTube:



Delete distributed content

When the content has been distributed, the Submission Status changes to 'Distributed'.

Distributor	Start Date	End Date	Submission Status	Action Available
YouTube Distribution Demo	30/25/+0200	45/25/+0200	Distributed	Delete

You can delete the distributed entry by clicking **Delete**.

Distributor	Start Date	End Date	Submission Status	Action Available
YouTube Distribution Demo	30/25/+0200	45/25/+0200	Distributed	

The Submission Status changes to 'Removing'.

Distributor	Start Date	End Date	Submission Status	Action Available
YouTube Distribution Demo	30/25/+0200	45/25/+0200	Removing 