

Access and work in the Media Gallery

Last Modified on 04/10/2024 1:36 am IDT

 This article is designated for all users.

Overview

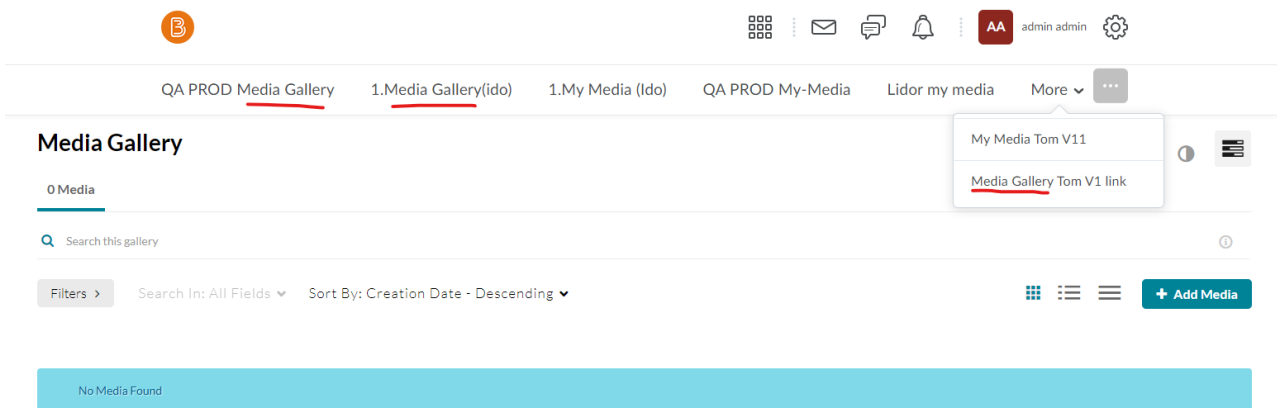
The Media Gallery is a repository of videos for a particular course that is visible to all instructors and students within the course.

Users may contribute new media items to the Media Gallery or add media items (publish) from [My Media](#)/other Media Gallery/[Shared Repository](#) based on the user's entitlements.

This article describes how to work in Media Gallery in D2L.

Access the Media Gallery

On the navigation bar, click on the Media Gallery name that you configured in the LTI configuration phase.



The screenshot shows the Kaltura Media Gallery interface. At the top, there is a navigation bar with a logo on the left and several icons (grid, mail, chat, bell, user profile 'AA admin admin', and settings) on the right. Below the navigation bar, there is a horizontal menu with several tabs: 'QA PROD Media Gallery', '1.Media Gallery(ido)', '1.My Media (Ido)', 'QA PROD My-Media', 'Lidor my media', and 'More'. The '1.Media Gallery(ido)' tab is selected and underlined. Below the menu, the 'Media Gallery' section is displayed. It shows '0 Media' and a search bar with the text 'Search this gallery'. Below the search bar, there are filters and sorting options: 'Filters >', 'Search In: All Fields', and 'Sort By: Creation Date - Descending'. A '+ Add Media' button is visible on the right. At the bottom, a light blue banner displays the message 'No Media Found'.

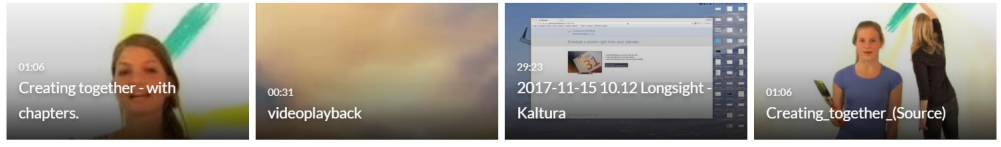
Media Gallery displays. The Home tab will be added and be the first tab to display in case playlists are available in the Media Gallery. Media Gallery Managers can create playlists to curate, organize, and categorize displayed featured content in their course. To learn more, see [Create and Add Media to a Playlist](#) and [Manage Playlists](#). The Media tab displays the media items published in the course Media Gallery.

Media Gallery

Start Meeting  

Home 11 Media

TESTPLAYLIST



Home Tab

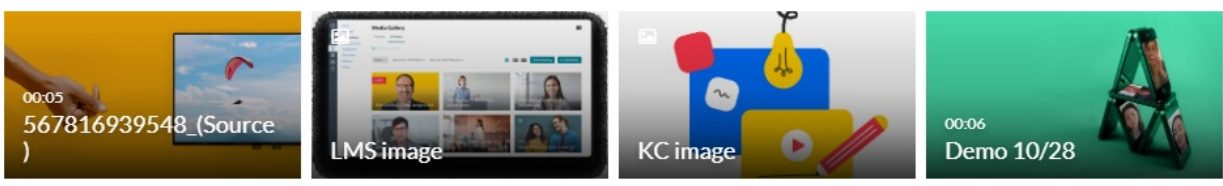
The Home tab is displayed as the first tab when playlists are available in the Media Gallery. Media Gallery Managers can create playlists to curate, organize, and categorize displayed featured content in their course. To learn more, see [Create and Add Media to a Playlist](#) and [Manage Playlists](#).

Media Gallery

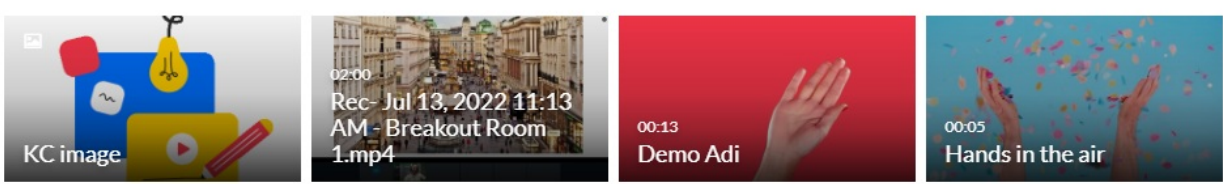
Start Meeting  

Home 35 Media

DEMO PLAYLIST 11/29/22



DEMO ADI PLAYLIST



Media Tab

The Media tab displays the media items published in the course Media Gallery.

Media Gallery

[Start Meeting](#) ⓘ ☰

Home **35 Media**

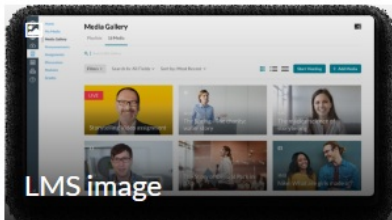
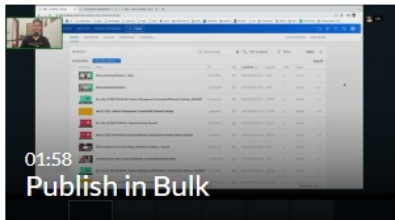
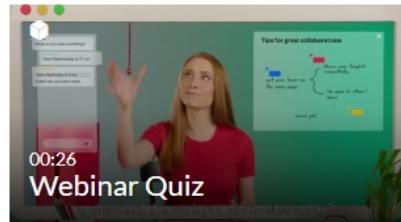
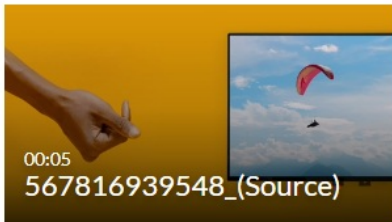
🔍 Search this gallery ⓘ

Filters >



[+ Add Media](#)

Search In: All Fields ▾ Sort By: Creation Date - Descending ▾



Set Your Media Display

Content in the Media Gallery Media tab may be displayed in one of three ways - Grid, Detailed, or Collapsed view. You may change this display by clicking one of the three buttons below:



Grid View (Default)

Media Gallery


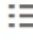

[Start Meeting](#)  

[Home](#) [35 Media](#)

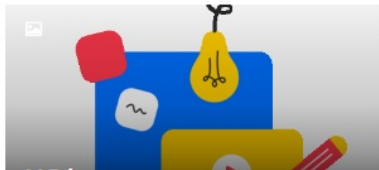
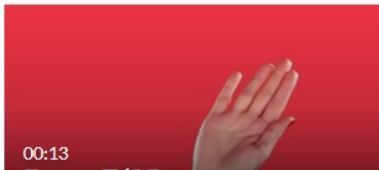
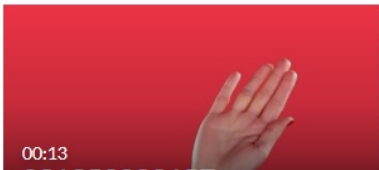
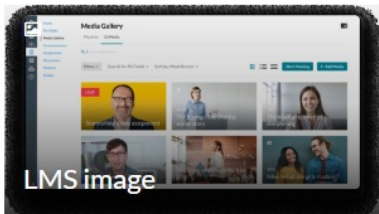
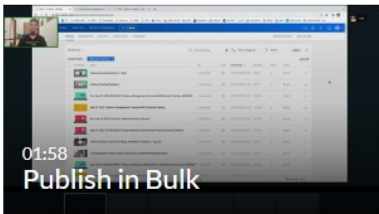
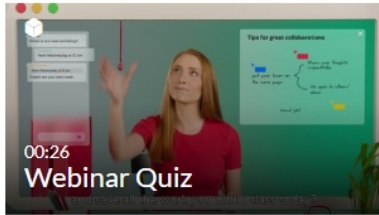
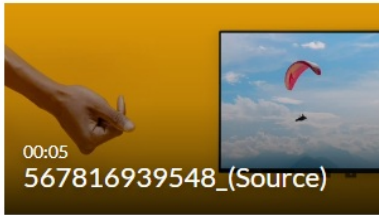
 Search this gallery 

Filters >

Search In: All Fields ▾ Sort By: Creation Date - Descending ▾

   [+ Add Media](#)

Grid view



Detailed View

Media Gallery

[Start Meeting](#)

Home **35 Media**

🔍 Search this gallery ⓘ

Filters >

Search In: All Fields ▾ Sort By: Creation Date - Descending ▾



Detailed view

[+ Add Media](#)



Demo 10/28

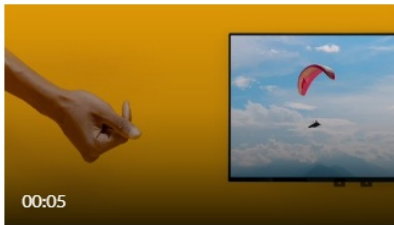
This is my demo video



00:06

From Instructor October 28, 2022

♥ 0 💬 0



567816939548_(Source)

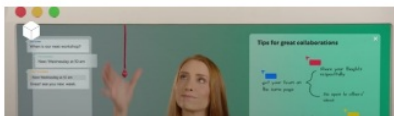
this is demo



00:05

From Customer Training October 11, 2022

♥ 0 💬 0



Webinar Quiz

Good Luck!



Collapsed View

Media Gallery

[Start Meeting](#) ⓘ ⌵

Home **35 Media**

🔍 Search this gallery ⓘ

Filters >

Search In: All Fields ▾ Sort By: Creation Date - Descending ▾

⌵ ⌵ ⌵ [+ Add Media](#)
Collapsed view

Demo 10/28

From Instructor October 28, 2022



567816939548_(Source)

From Customer Training October 11, 2022



Webinar Quiz

From Customer Training October 11, 2022



Manage Media

To learn more about managing your media, please see [Manage Media](#).

[template("cat-subscribe")]