

Player module

Last Modified on 12/31/2025 5:57 pm IST

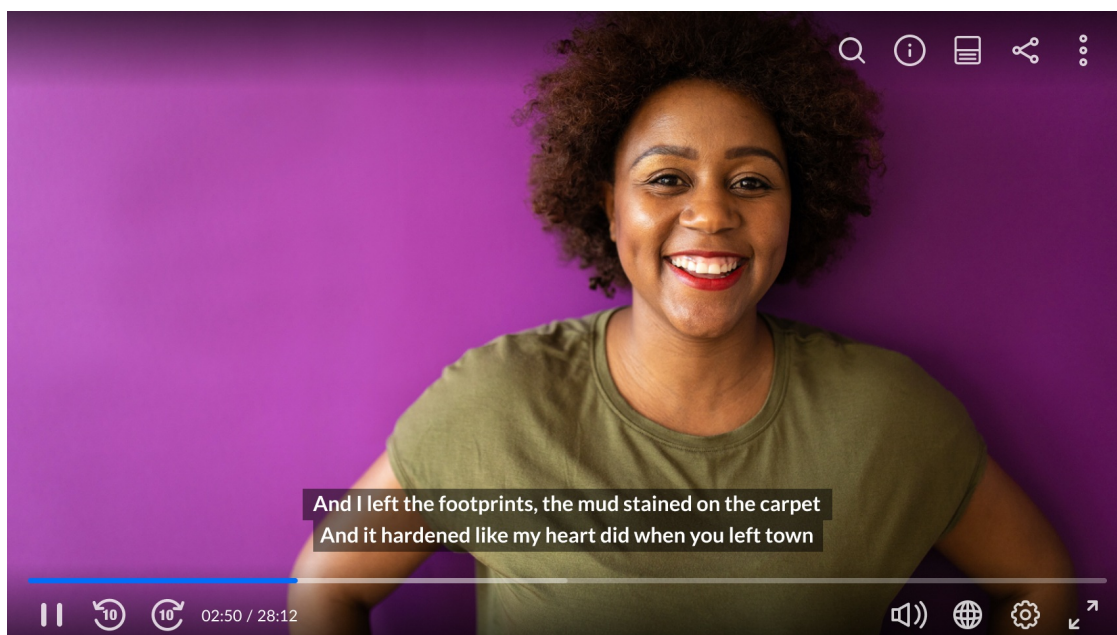
 This article is designated for administrators.

About

The **Player module** is used to set the default main player in the video portal and KAF applications. The height of the player UI may be configured as well as the ratio of the video inside of the player.



All player IDs are taken from the KMC Player Studio tab. Please visit [Kaltura Player Studio](#) to learn more about how to manage, create and personalize your Kaltura Players via the KMC.



Configure

1. Go to your Configuration Management console and click on the **Player** module. You can also navigate to it directly using a link:

https://{your_KMS_URL}/admin/config/tab/player.

Moderation
My-media
Navigation
Player
PlaylistPage
Recaptcha
Search
Security

The 'Player' page displays.

MANAGE CONFIGURATION
MANAGE USERS
MANAGE GROUPS
KNOWLEDGE BASE
CLEAR THE CACHE
GO TO SITE

Configuration Management

Server Tools
Backup Configuration
Player replacement tool
Global
Application
AddNew
Auth
Categories
Channels
Client
Debug
EmailService
EmailTemplates
Gallery
Header
Icalendar
Languages
Login
MediaCollaboration
Metadata

Player

playerId	<input type="text" value="52243762"/>	The Player ID for the instance's main player used in all media pages. This is also the fallback for many modules, in case no specific player is entered.
playerBarHeightPixels	<input type="text" value="30"/>	The height (in pixels) of the player ui which is not part of the actual video (for example - the bottom bar)
playerVideoRatioPercent	<input type="text" value="56.25"/>	The ratio (in percent) of the video inside the player. Standard values: 16.9 = 56.25 , 4.3 = 75 , 16.10 = 62.5
playerEditId	<input type="text" value="52243762"/>	The Player ID for the player used in edit media pages
autoPlayOnLoad	<input type="button" value="Yes"/>	Choose the behavior of players' autoplay in media pages deciding on the automatic playback of the player on the page. This includes VOD media players, Playlist players, but does not pertain embedded players. Choose 'Yes' to set the video player loaded on the page to begin playing automatically. Autoplay is triggered each time a new page loads. Choose 'Use Player Settings' to use the settings in the individual player.
playerModerationId	<input type="text" value="50952692"/>	The Player ID for the player used in Channel and Gallery moderation tabs

Save

2. Configure the following:

playerId - Enter the player ID (uiConf ID) for the instance's main default player used in all media pages. This is also the fallback for many modules, in case no specific player is entered.

Set the visual display of the player

Use the following fields to determine the player's display on your screen.

playerBarHeightPixels - Enter the height (in pixels) of the player UI that is not part of the actual video (for example - the bottom bar.)

playerVideoRatioPercent - The ratio (in percent) of the video inside the player. Standard values: 16:9 = 56.25 , 4:3 = 75 , 16:10 = 62.5.

Set a player for editing purposes

playerEditId - You may choose to edit entries using a different player. Enter the Player ID for editing data. If left empty the default Player ID is used.

autoPlayOnLoad - Controls whether players start playing automatically on media pages (applies to VOD and playlist players on media pages; does not apply to

embedded players).

Choose one of the options:

- **Yes** - The player starts playing automatically each time the page loads. This overrides the player settings.
- **No** - The player does not start playing automatically. This overrides the player settings.
- **Use Player Settings** - Uses the autoplay setting defined in the player.



- Autoplay runs when a user first opens the Video Portal and whenever a new page loads (for example, when moving from 'My Playlists' to a gallery).
- When a user clicks a video in a gallery, the video always starts playing, regardless of the **autoPlayOnLoad** setting.

Set a player for moderated content

playerModerationId - The player ID for the player used in Channel and Gallery moderation tabs. If left empty the default player ID is used. For more information about moderation in Video Portal, see [Channel moderation - Theming](#).

Where can you set player IDs for different types of media?

Media Players are created and configured in the KMC Studio tab. You can apply the same player across the application or customize multiple players for different types of media/repositories/components. In the KMC, navigate to the **Kaltura Player Studio** tab to find the Players List. Please visit [Introduction to the Player Studio](#) to learn more.

The following lists the types of media and where you may override the default player's id:

- **Video** - uses the playerId from the [Player](#) module.
- **Quiz** - uses the quizPlayerId or the BSEPlayerId from the [Quiz](#) module.
- **Audio** - uses the customPlayerId from the [Audioentry](#) module.
- **Playlists** - uses the playerId from the [PlaylistPage](#) module.
- **Image** - uses the customPlayerId from the [Imageentry](#) module.
- **Webcast/Live** - uses the PlayerUiconfId from the [Kwebcast](#) module.
- **Rapt Media** - uses the playerId from the [Raptmedia](#) module.
- **Youtube** - uses the previewPlayer from the [Youtube](#) module.
- **Twitter** - uses the tPlayerId from the [Twitter](#) module.

- **Facebook** - uses the fPlayerId from the [Facebook](#) module.
- **Oembed** - uses the PlayerId from the [Oembed](#) module. For more information, see the article about [MediaSpace oEmbed Integration](#).
- **Embed** - uses the uiConfId from the [Embed](#) module.
- **Browseandembed** - uses the BSEPlayerId from the [Browseandembed](#) module.

Related modules

- [Quiz](#) module
 - [Audioentry](#) module
 - [PlaylistPage](#) module
 - [Imageentry](#) module
 - [Kwebcast](#) module
 - [Raptmedia](#) module
 - [Youtube](#) module
 - [Twitter](#) module
 - [Facebook](#) module
 - [Oembed](#) module
 - [Embed](#) module
 - [Browseandembed](#) module
 - [Channeltheme](#) module
 - [Entrydesign](#) module
-