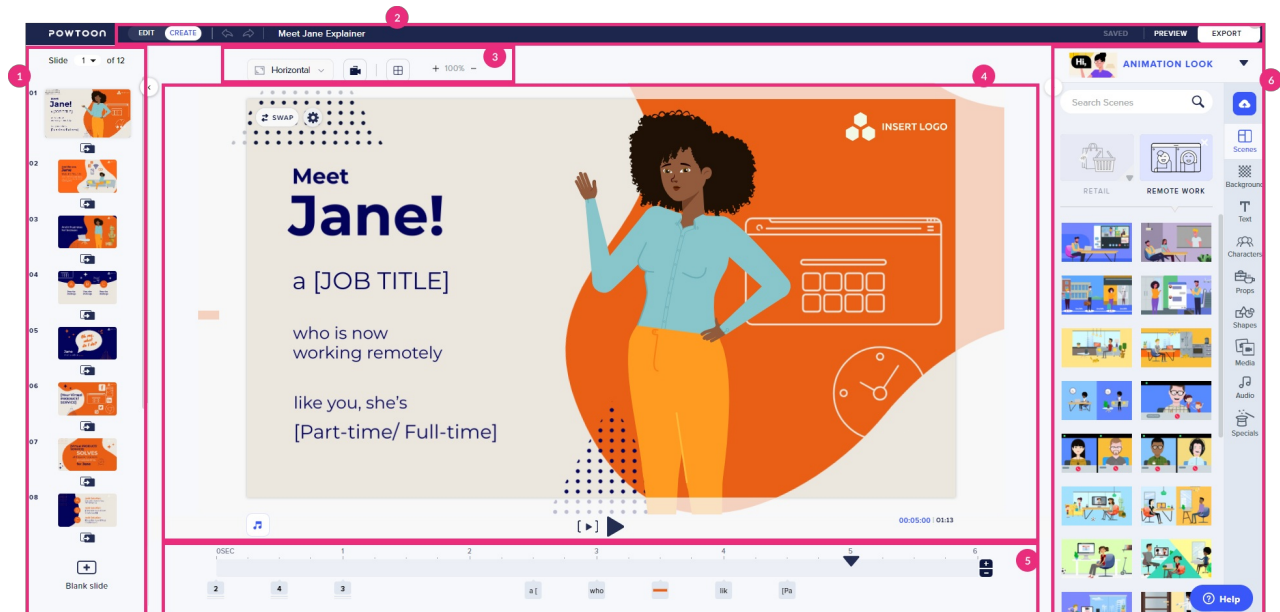


The Powtoon Studio

Last Modified on 02/12/2024 11:34 am IST

 This article is designated for all users.

Let's get to know the Powtoon Studio!



Left side slide panel (1) is used to display all the slides in thumbnail view. You can use this view to perform many actions, including adding, deleting, and duplicating slides. You can use a template slide or a blank slide.

Top bar (2) here you will find the **Studio Mode** toggle. Use this toggle to switch between **Edit** and **Create** mode. This gives you basic editing tools such as cut, copy, paste, delete, etc.

- **Edit mode** provides a streamlined and straightforward workspace, with only the tools best suited for working with templates.
- **Create mode** includes all the Studio tools and content. The timeline is displayed and all the tabs and libraries can be accessed.
- **Undo / Redo**
- **Preview & Export** to preview and export the Powtoon to your Video Portal or KAF applications.
- **Save**

Stage control (3)

- **Set ratio** - Horizontal, square, verticle

- **Show / Hide Camera**
- **Grid**
- **Zoom In / Zoom Out**

Stage (4) is the area on which you build your scene using all the content available in Powtoon.

- The **play** button. Click this button to play the Powtoon from the time at which the playhead is positioned until the end of the Powtoon.
- Click the **Sound icon** to access the **Sound Control** panel, used to manage the sound in your Powtoon.

Timeline (5) is used to time all the objects on the slide.

Right side tabs panel (6) The tabs (Scenes, Background, Text, Characters, etc.) are the entry points to all the content in the Powtoon Studio. After selecting a tab, several libraries are displayed with content specific to the tab.

In the following example, clicking the Scenes tab displays the following libraries: Intros, Specifics, Image Grids, Situations, and Concepts.

- **Choose a looks for your Powtoon**
- **Upload your media**
- **Scenes**
- **Background**
- **Text**
- **Characters**
- **Props**
- **Shapes**
- **Media**
- **Audio**
- **Specials**