

TimeAndDate module

Last Modified on 11/18/2024 3:35 pm IST

 This article is designated for administrators.

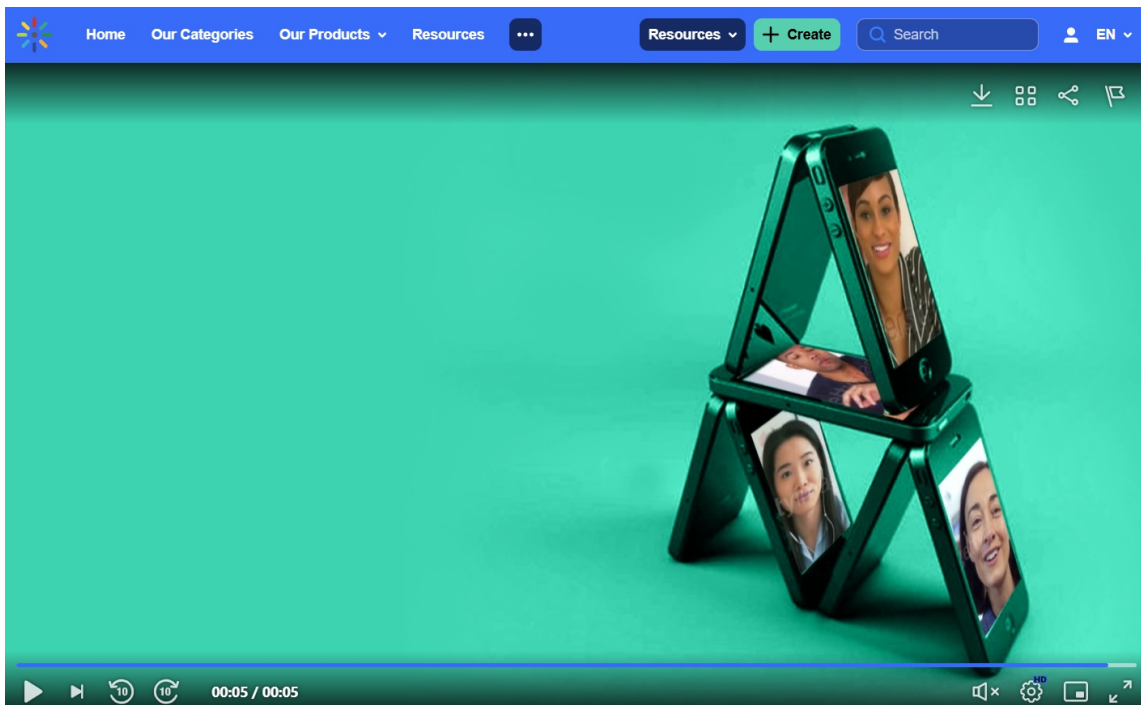
About

The **TimeAndDate** module allows administrators to customize how dates and times are displayed throughout the application. This includes adjusting default date formats for different languages and defining how time is represented.

With this module, admins can configure three date formats used in various locations in the application:

- **Long**: Full date, including the day of the week (e.g., Saturday, June 12, 2025).
- **Short**: Date without the day of the week (e.g., June 12, 2025).
- **Long with no year**: Full date without the year (e.g., Saturday, June 12).

Each format is used on different pages or locations within the application. For details, see the [Setting the Date and Time Format Display](#) article.



Streamlining Corporate Communication with Kaltura

By Louise Smith • June 17, 2024 • 36 Plays



Enterprise solutions
[Visit channel](#)

 0  Share ...

Admins can also define language-specific date formats, which is especially useful for languages like Japanese, where unique date characters are required. By default, the system uses preconfigured formats, but these can be customized using tokens.

Date format tokens

Admins can build custom date formats using the following tokens:

- **YYYY**: 4-digit year (e.g., 2019)
- **YY**: 2-digit year (e.g., 19)
- **MMMM**: Full-length month (e.g., June)
- **MMM**: Abbreviated month (e.g., Jun)
- **MM**: Zero-padded month (e.g., 06)
- **M**: Month (e.g., 6)
- **dddd**: Full day of the week (e.g., Sunday)
- **DD**: Zero-padded day of the month (e.g., 01)
- **D**: Day of the month (e.g., 1)
- **Do**: Day of the month with an ordinal (e.g., 1st)

Examples of common date formats

- **YYYY-MM-DD**: Displays as 2019-06-01
- **MMMM Do, YYYY**: Displays as June 1st, 2019
- **[The] Do [of] MMMM**: Displays as The 1st of June
- **M/D/YYYY**: Displays as 6/1/2019
- **YYYY[] MM[] DD[] dddd**: Displays as 2020[] 5[]11[] []

Configure

1. Go to your Configuration Management console and click on the **TimeAndDate** module. You can also navigate to it directly using a link:

https://{your_KMS_URL}/admin/config/tab/timeAndDate.

Search
Security
SharedRepositories
Widgets
TimeAndDate

The TimeAndDate page displays.

Configuration Management

- Server Tools
 - Backup Configuration
 - Player replacement tool
- Global
 - Application
 - AddNew
 - Auth
 - Categories
 - Channels
 - Client
 - Debug
 - EmailService
 - EmailTemplates
 - Gallery
 - Header
 - Languages
 - Login
 - MediaCollaboration
 - Metadata
 - Moderation
 - My-media
 - Navigation
 - Player
 - PlaylistPage
 - Recaptcha
 - Search
 - Security
 - SharedRepositories
 - Widgets
 - TimeAndDate**
- Modules
 - Accessibility

TimeAndDate

Module Info

Info

This module will allow you to change the default UI for dates in the application. The application has 3 date formats, used in different locations and chosen according to the context and the space available. You can also apply different date format for different languages, using the mapping below. Leave empty, to use system defaults.
 Long (e.g. Saturday, June 12, 2021), Short (e.g. June 12, 2021), and Long with no year (e.g. Saturday, June 12).
 Choose a language to apply different date format for different languages.
 NOTE: This module will replace the dateFormat field under the application module.

To choose and change the date format, please use the following strings:

- YYYY: 4-digit year '2019'
- YY: 2-digit year '19'
- MMMM: Full-length month 'June'
- MMM: 3 character month 'Jun'
- MM: Month of the year, zero-padded '06'
- M: Month of the year '6'
- dddd: Day of the week: 'Sunday'
- DD: Day of the month, zero-padded '01'
- D: Day of the month '1'
- Do: Day of the month with numeric ordinal contraction '1st'

Here's some common date formats and how to express them using tokens:

- To show '2019-06-01' use: 'YYYY-MM-DD'
- To show 'June 1st, 2019' use: 'MMMM Do, YYYY'
- To show 'The 1st of June' use: '[The] Do [of] MMMM'
- To show '6/1/2019' use: 'M/D/YYYY'
- To show '2020年 5月 11日 - 火曜日' use: 'YYYY[年] MM[月] DD[日] dddd'

timeDisplay Choose how to show time in the application

languageDates

Change the default date formats for any of the site's languages.

weekStartDay Which day starts the week

uploadDateStyle Select how the media upload date should show to the users. Choose 'x time ago' to show '3 month ago' or '4 days ago'. Choose 'On date' to show 'On 4/5/2019' depending on the date format that was selected

2. Configure the following:

timeDisplay - Choose how to show the time in the application. Choose from **AM/PM** or **24h**.

languageDates

Change the default date formats for any of the site's languages.

Click **+Add "languageDates"**.

languageDates

Change the default date formats for any of the site's languages.

[+ Add "languageDates"](#)

Additional fields display.

DELETE

language	<input type="text" value="English - en"/>	Choose the language you would like to apply these specific date format to from the site's languages.
longDate	<input type="text" value="dddd, MMMM DD, YYYY"/>	Full date including the day of the week. e.g. Saturday, June 12, 2021.
shortDate	<input type="text" value="MMMM DD, YYYY"/>	Date not including the day of the week. e.g. June 12, 2021.
longDateNoYear	<input type="text" value="dddd, MMMM DD"/>	Date including the day of the week, but no year. e.g. Saturday, June 12.

language - Choose the language from the drop-down list you would like to apply

these specific date format to from the site's languages. Each language may have its own setting, if left empty, the default is used.

longDate - Full date including the day of the week, for example, Saturday, June 12, 2025.

shortDate - Date not including the day of the week, for example, June 12, 2025.

longDateNoYear - Date including the day of the week, but no year, for example, Saturday, June 12.

weekStartDay - Choose from the drop-down list which day starts the week.

uploadDateStyle - Select how the media upload date is displayed to users:

- Choose **x time ago** to display relative dates, such as "3 months ago" or "4 days ago."
- Choose **On date** to display absolute dates, such as "On 4/5/2019," based on the selected date format.

editTimeDisplay - Choose the display format for date selectors when editing media data of type "date only":

- Month-Day (American)
- Day-Month (European)

3. Click **Save**.
