

Create a video quiz assignment in Canvas

Last Modified on 06/30/2025 7:20 pm IDT

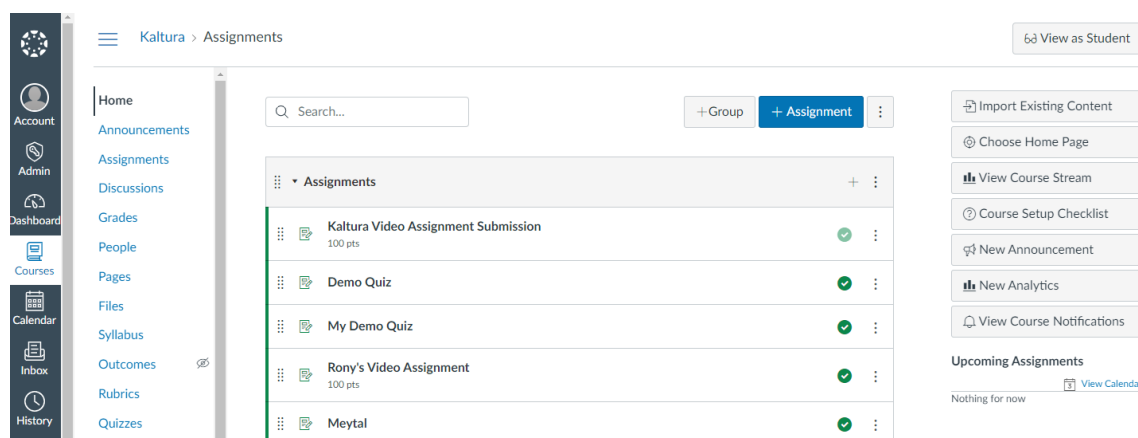
 This article is designated for faculty members.

About

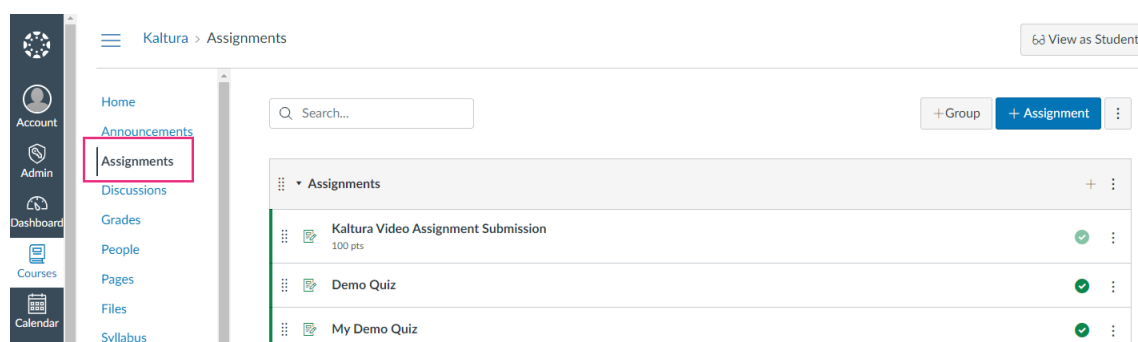
This guide explains how to create an assignment using Kaltura's Video Quiz feature, which automatically integrates quiz scores with the Canvas Gradebook.

Add your quiz to Canvas

1. Create a video quiz in your My Media. (See [Kaltura Video Quiz in Canvas](#) for details.)
2. Go to your course.



3. In your course's navigation pane, click the **Assignments** tab.



4. Click **+Assignment**.



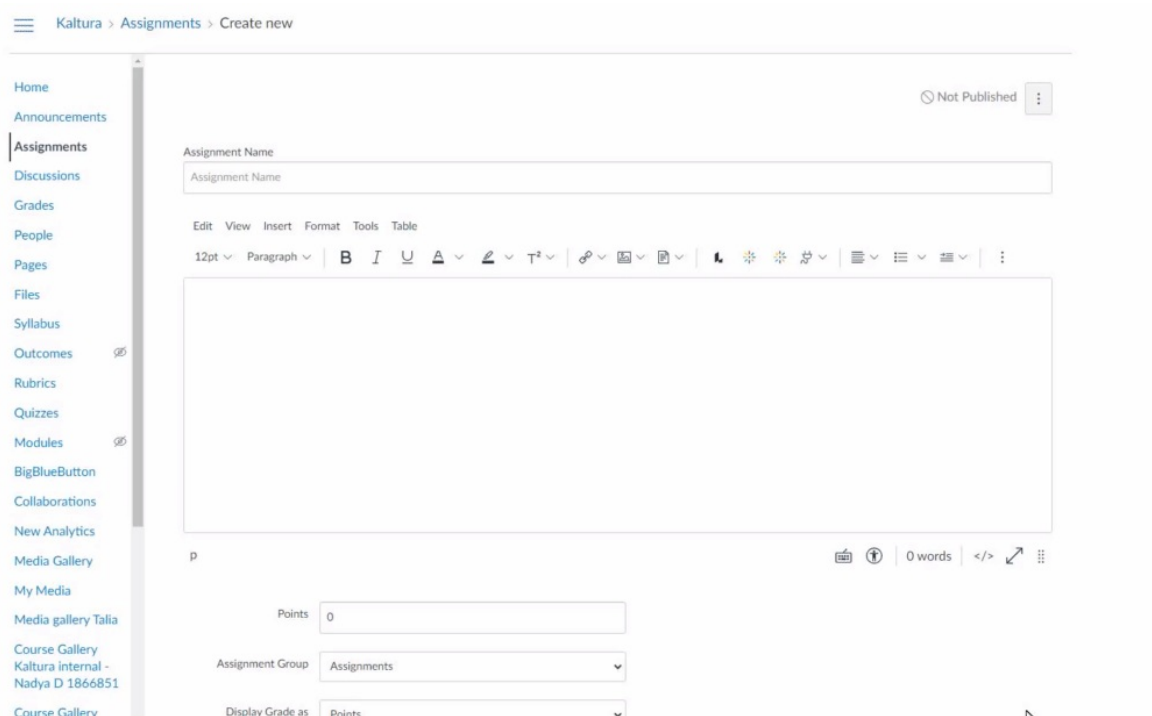
For quiz scores to pass to the Canvas Gradebook, the quiz must be launched from the **Assignments** tab. If launched from the Course Gallery, quiz scores will not transfer to the gradebook.

The **Create New Assignment** page displays.

5. Scroll down to **Submission Type** and select **External Tool**.



Selecting **External Tool** allows Canvas to launch the quiz through Kaltura and receive the student's score once submitted.



Do **not** add any Kaltura content in the text editor. You can add text or other attachments as needed.

6. Under **External Tool Options**, click **Find**.

Points

Assignment Group

Display Grade as

☐ Do not count this assignment towards the final grade

Submission Type

External Tool Options

Enter or find an External Tool URL

Find

☐ Load This Tool In A New Tab

Submission Attempts **Allowed Attempts**

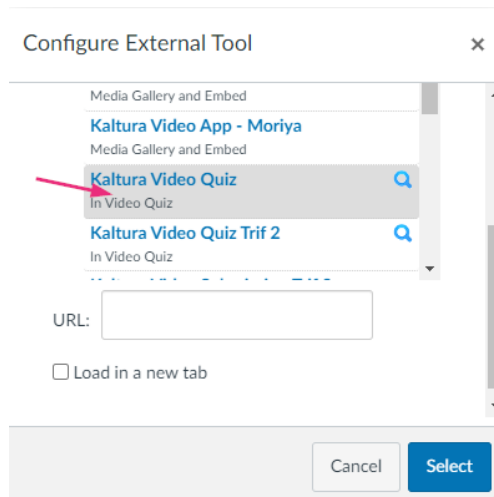
The **Configure External Tool** window displays.

Configure External Tool ×

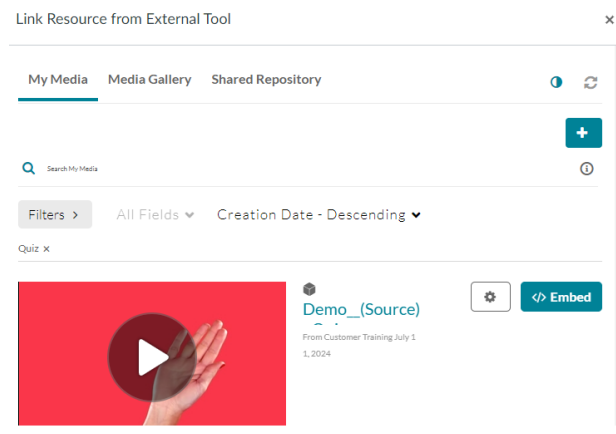
Select a tool from the list below, or enter a URL for an external tool you already know is configured with Basic LTI to add a link to it to this module.

- Kaltura In Video Quiz (canvaslti13training2053461)** Q
Canvas LTI 1.3 Training
- In Video Quiz (canvasltitest3)** Q
canvasltitest3 LTI 1.3 Key
- In Video Quiz Kaltura internal - D 1866851** Q
Kaltura internal -

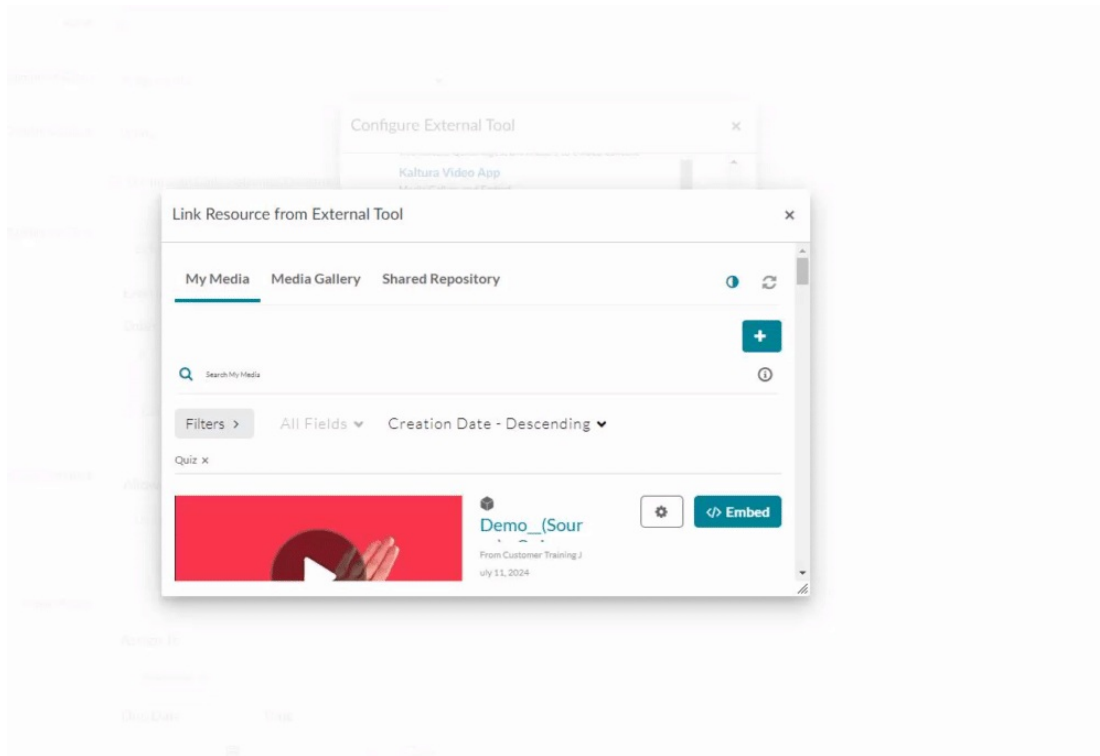
7. Click on the **In Video Quiz** tool (or the new tool name you configured) to select it.



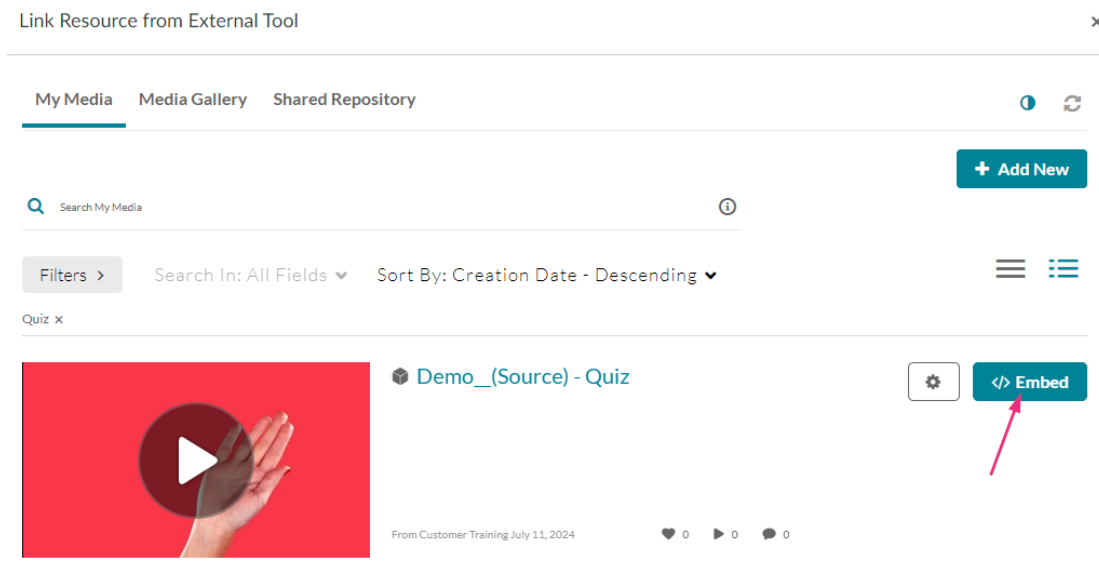
The **Link Resource from External Tool** window displays.



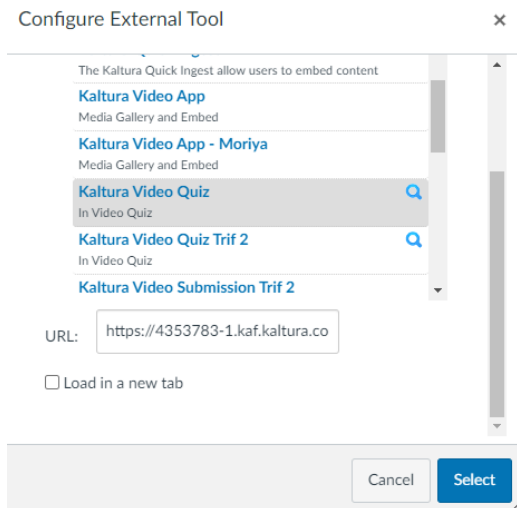
If desired, you can expand the window by grabbing the corner and dragging.



8. Find the desired quiz and click **Embed**.



The **Configure External Tool** window displays again.



9. Click **Select**.
10. If you want to assign points, scroll up to the **Points** section and enter a value. If no points are set, the Canvas gradebook will display a score of 0 after the quiz is submitted. However, you will still be able to view students' responses and scores through Kaltura's analytics for that quiz.

Points

Assignment Group

Display Grade as

☐ Do not count this assignment towards the final grade

Submission Type

External Tool Options

Enter or find an External Tool URL

☐ Load This Tool In A New Tab

Submission Attempts

11. Scroll down and click **Save and publish**.

Assign Access

Assign To

Everyone X

Due Date Time Clear

Available from Time Clear

Until Time Clear

+ Assign To

☐ Notify users that this content has changed

Cancel Save & Publish Save

The quiz displays on the Assignments page.

Kaltura > Assignments > Demo__(Source) - Quiz (00:13) 63 View as Student

Home

Announcements

Assignments

Discussions

Grades

People

Pages

Files

Syllabus

Outcomes

Rubrics

Quizzes

Modules

BigBlueButton

Collaborations

Demo__(Source) - Quiz (00:13)

Edit Assignment Settings

SpeedGrader

Start your video quiz!

In this video, you will be given a Quiz. Good Luck!
All questions must be answered. The quiz will be submitted at the end.

[Start Quiz](#) [Download Pre-Test](#)

When students complete and submit their quiz (see [Kaltura Video Quizzes - How to take a quiz](#)), the grades are automatically sent to the Canvas Gradebook for the relevant assignment and student.