

CSS template for Video Portal customizations

Last Modified on 09/06/2024 11:27 am IDT

 This article is designated for administrators.

General

```
/* CSS Template to theme your KMS *//* resize top logo */
#header .brand img
{
max-height: 40px;
}
/* this customizes the slider and add some space next to it */
body.module-home #entrySlider {
margin-bottom: 0px;
text-align: center;
/* margin-top: 10px; */
/* margin-left: 20px;
margin-right: 20px;*/
}

/* Here we list all the things to search for to make a quick color scheme */
/* Color 1: #333333 PRIMARY NAV */
/* Color 2: #eeeeee LINKS */
/* Color 3: #ffffff Header text and underline */
/* BG color: #367a8e *//* ***** COLOR 1 ***** */
/* This modifies the color of the text and icons in dropdown menus */.dropdown-menu>li>a, #header .nav li>a{

color: #333333 !important;
}a, .stat_data {

color: #333333 !important;
}/* ***** COLOR 2 ***** */
/* This modifies the color of hyperlinked text within mediaspace, as well as certain icons and other dominant UI elements
*/.nav-pills>li>a#gallerySearch-tab, .nav-pills>li>a#gallerySearch-tab:active, .nav-pills>li>a#gallerySearch-tab:focus, .nav-
pills>li>a#channelSearch-tab, .nav-pills>li>a#channelSearch-tab:active, .nav-pills>li>a#channelSearch-tab:focus,
#channel_title
.muted, #categoryCarousel #filterBarWrap .categorynav #categoryview
button.active, .mediaTable tbody tr .entryTitle h4, #videosResultsTable tbody tr .entryTitle
h4, .input-append i, .input-prepend
i, .input-prepend
.btn, #entryButtons #Captions .videoSearchInput:after, #wrap #filterBarWrap #mymediaview
button.active, .mediaTable tbody tr .entryTitle, #videosResultsTable tbody tr
.entryTitle, #wrap #myMediaCarousel #myMediaEntries #filterBarWrap .navbar-search-wrapper form .input-prepend
i, .mediaTable tbody tr .entryTitle a, #videosResultsTable tbody tr .entryTitle
a, .thumb_user_content
.searchme, #entryCarousel .expandable dl.dl-horizontal:not(.details) dt#appearsIn + dd > a.badge, #entryCarousel
.expandable dl.dl-horizontal:not(.details) dt.customdata+dd>a.badge {

color: #eeeeee !important;
}.mymediaTable tbody tr td.thumbTd .status.label-info, .nav-list li > a:hover, .nav-list li > a:focus, .bs-docs-sidenav li >
a:hover, .bs-docs-sidenav li>a:focus, .nav-list li.active > a, .bs-docs-sidenav li.active>a {

background-color: #eeeeee !important;
}.navbar-search-wrapper form .input-append input,.navbar-search-wrapper form .input-prepend input {

border-left: #eeeeee !important;
```

```

border-color: #eeeeee !important;
}/* This modifies the color of hyperlinked text that is currently being hovered by the end user as well as certain icons and other
dominant UI elements */a:active, a:hover, a:focus{

/* color: #eeeeee !important; */
}.nav-pills>li>a#gallerySearch-tab:hover, .nav-pills>li>a#channelSearch-tab:hover, #wrap .navbar.categorySearchBar .input-
append .add-on:hover i, #wrap .navbar.categorySearchBar .input-prepend .add-on:hover i, #wrap .navbar.channelSearchBar
.input-append .add-on:hover i, #wrap .navbar.channelSearchBar .input-prepend .add-on:hover
i, #categoryCarousel #filterBarWrap .categorynav #categoryview .btn:hover, body.module-quiz.controller-entry.action-add-
quiz #wrap #browseTable .navbar-search-wrapper form .input-append .add-on:hover i, body.module-quiz.controller-
entry.action-add-quiz #wrap #browseTable .navbar-search-wrapper form .input-prepend .add-on:hover
i{

color: #eeeeee !important;
}/* This modifies the background color and border color of buttons */button.btn.btn-link, button.btn.btn-link:active,
button.btn.btn-link:focus, button.btn.btn-small.btn-link, button.btn.btn-small.btn-link:active, button.btn.btn-small.btn-link:focus,
a.btn.btn-link, a.btn.btn-link:active, a.btn.btn-link:focus, a.btn.btn-small.btn-link, a.btn.btn-small.btn-link:active, a.btn.btn-
small.btn-link:focus, input.btn.btn-link, input.btn.btn-link:active, input.btn.btn-link:focus, input.btn.btn-small.btn-link,
input.btn.btn-small.btn-link:active, input.btn.btn-small.btn-link:focus, div.btn.btn-link, div.btn.btn-link:active, div.btn.btn-
link:focus, div.btn.btn-small.btn-link, div.btn.btn-small.btn-link:active, div.btn.btn-small.btn-link:focus, span.btn.btn-link,
span.btn.btn-link:active, span.btn.btn-link:focus, span.btn.btn-small.btn-link, span.btn.btn-small.btn-link:active, span.btn.btn-
small.btn-link:focus {

color: #eeeeee !important;
}button.btn.btn-primary, button.btn.btn-small.btn-primary, a.btn.btn-primary, a.btn.btn-small.btn-primary, input.btn.btn-
primary, input.btn.btn-small.btn-primary, div.btn.btn-primary, div.btn.btn-small.btn-primary, span.btn.btn-primary,
span.btn.btn-small.btn-primary, #entryButtons>ul>li.active>a, #entryButtons>ul>li.active>a:hover,
#entryButtons>ul>li.active>a:focus, #entryButtons>ul>li>a.active, #entryButtons>ul>li>a.active:hover,
#entryButtons>ul>li>a.active:focus, .nav-pills>li.active>a, .nav-pills>li.active>a:hover, .nav-pills>li.active>a:focus, .nav-
pills>li>a.active, .nav-pills>li>a.active:hover, .nav-pills>li>a.active:focus {

background-color: #eeeeee !important;
}button.btn.btn-primary, button.btn.btn-small.btn-primary, a.btn.btn-primary, a.btn.btn-small.btn-primary, input.btn.btn-
primary, input.btn.btn-small.btn-primary, div.btn.btn-primary, div.btn.btn-small.btn-primary, span.btn.btn-primary,
span.btn.btn-small.btn-primary, .nav-tabs>.active>a, .nav-tabs>.active>a:hover, .nav-tabs>.active>a:focus, .nav-tabs li
a:hover, #entryCarousel .nav-pills > li.active>a, #entryCarousel .nav-pills > li.active>a:hover, #entryCarousel .nav-pills >
li.active>a:focus, #entryCarousel .nav-pills > li>a.active, #entryCarousel .nav-pills > li>a.active:hover, #entryCarousel .nav-
pills > li>a.active:focus, #entryCarousel .nav-pills>li>a:hover {

border-color: #eeeeee !important;
}/* This modifies the background color of the hover effect when a child element of a dropdown menu is hovered or clicked
*/.dropdown-menu>li>a:hover, .dropdown-menu>li>a:focus, .dropdown-submenu:hover>a, .dropdown-submenu:focus>a {

background-color: #eeeeee !important;
}/* This modifies the color of tags across KMS */.tagsWrapper .badge-info, .tagsWrapper .badge-info:hover{

color: #eeeeee !important;
border-color: #eeeeee !important;
}/* ***** COLOR 3 ***** *//* This modifies the color of both the text and the underline effect on the primary navigation
*/#header #horizontalMenu .nav>li>a, #header #horizontalMenu .nav > .active > a, #header #horizontalMenu .nav > .active
> a:hover, #header #horizontalMenu .nav > li > a:hover, #header #horizontalMenu .nav>.active>a:focus,
#gsearchv2,#header .btn, #header .btn:active, #header .btn:focus {

color: #ffffff !important;

}#header #horizontalMenu .nav > .active > a, #header #horizontalMenu .nav > .active > a:hover, #header #horizontalMenu
.nav > li > a:hover, #header #horizontalMenu .nav>.active>a:focus {

border-color: #ffffff !important;
}/* ***** BG COLOR ***** *//* This modifies the background color of buttons when they are active or being hovered by a
user */button.btn.btn-link:hover, button.btn.btn-small.btn-link:hover, a.btn.btn-link:hover, a.btn.btn-small.btn-link:hover,
input.btn.btn-link:hover, input.btn.btn-small.btn-link:hover, div.btn.btn-link:hover, div.btn.btn-small.btn-link:hover, span.btn.btn-

```

```

link:hover, span.btn.btn-small.btn-link:hover{

  color: #367a8e !important;
}button.btn.btn-primary:hover, button.btn.btn-small.btn-primary:hover, a.btn.btn-primary:hover, a.btn.btn-small.btn-
primary:hover, input.btn.btn-primary:hover, input.btn.btn-small.btn-primary:hover, div.btn.btn-primary:hover, div.btn.btn-
small.btn-primary:hover, span.btn.btn-primary:hover, span.btn.btn-small.btn-primary:hover {

  background-color: #367a8e !important;
}button.btn.btn-primary:hover, button.btn.btn-small.btn-primary:hover, a.btn.btn-primary:hover, a.btn.btn-small.btn-
primary:hover, input.btn.btn-primary:hover, input.btn.btn-small.btn-primary:hover, div.btn.btn-primary:hover, div.btn.btn-
small.btn-primary:hover, span.btn.btn-primary:hover, span.btn.btn-small.btn-primary:hover {

  border-color: #367a8e !important;
}/* This modifies the background color of the KMS header. This is the area that contains the logo and primary navigation
*/#header .navbar-inner {

  background-color: #367a8e !important;
  box-shadow: 0 4px 10px 5px rgba(0,0,0,0.1);
  background: linear-gradient(0, white 50%, #000 50%);}/* This modifies the color of the text and icons in dropdown menus
when that element is actively hovered */.dropdown-menu>li>a:hover, #header .nav li>a:hover{

  color: #367a8e !important;
}/****** GRADIENTS *****/}/* This modifies the overlay gradient for thumbnails who use a gradient *//body.module-home
.photo-group.featured_wrapper .overlay-wrapper, #galleryGrid.grid li.galleryItem div.thumbnail .overlay-wrapper, #mySidebar
.thumbnail .overlay-wrapper, .mediaTable tbody tr td.thumbTd .overlay-wrapper, #videosResultsTable tbody tr td.thumbTd
.overlay-wrapper {

  background: linear-gradient(0deg,rgba(0,0,0, .6) 0%,rgba(0,0,0, .3) 30%,rgba(0,0,0, .15) 53%,rgba(0,0,0, .10) 71%,rgba(0,0,0,
.05) 100%);

}
/* This modifies the gradient color wherever thumbnails use gradients that support a hover effect *//body.module-home .photo-
group.featured_wrapper:hover .overlay-wrapper, #galleryGrid.grid li.galleryItem div.thumbnail:hover .overlay-wrapper {

  background: linear-gradient(0deg,rgba(0,0,0, .6) 0%,rgba(0,0,0, .3) 53%,rgba(0,0,0, .2) 71%,rgba(0,0,0, .10) 100%);

}

```

Example 1

Modify the red banner/flag of the webcasting thumbnail in the channel playlist.

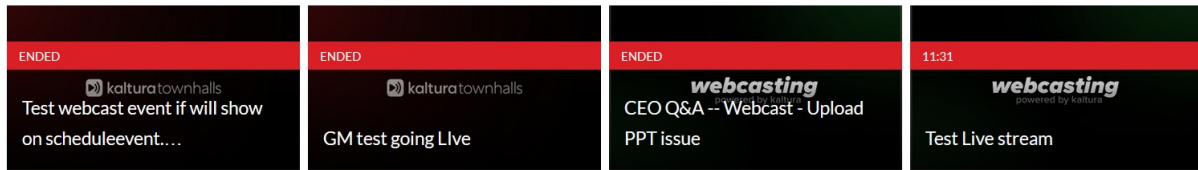
```

}
/*This modifies the red banner/flag of the webcasting thumbnail in the Channel playlist.*/
#orderedPlaylists .playlist-carousel-container .thumbnails .channelPlaylistGalleryItem .thumbnail .thumb_icon {width: auto
!important;}
}

```

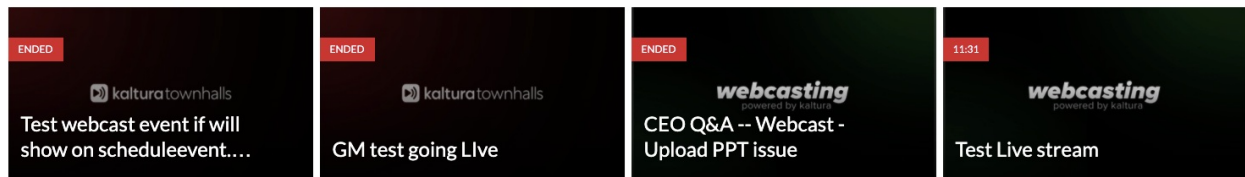
Without CSS:

WEBCASTING PLAYLIST



With CSS:

WEBCASTING PLAYLIST



Example 2

In case V7 Player is playing an audio file the entry name might cover the captions. To avoid this you may add custom CSS to hide the title, as follows:

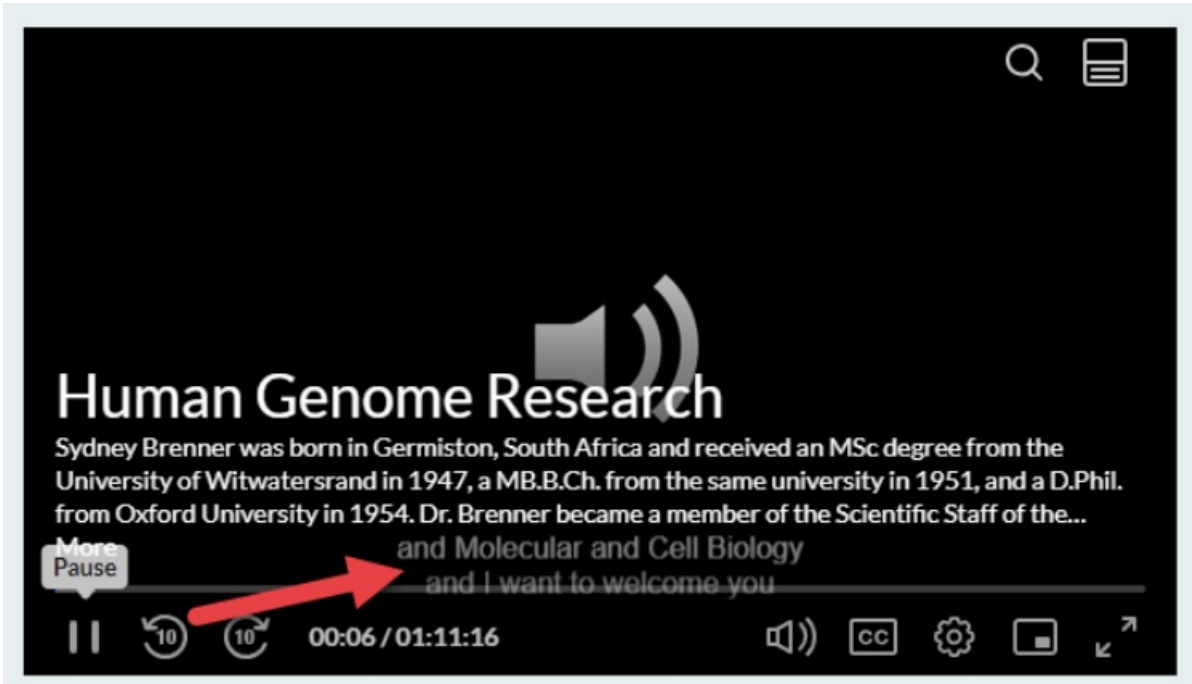
```
.playkit-audio-entry-title { display: none;}
```

or change the position to be at the top of the player:

```
.playkit-player .playkit-audio-entry-backdrop.playkit-audio-entry-expanded .playkit-audio-entry-details { margin: 100px 60px 16px !important;} .playkit-player .playkit-audio-entry-backdrop {display: initial !important;}
```

In addition, to see the caption clearly and not fade they can add the following CSS:

```
.playkit-player .playkit-audio-entry-backdrop.playkit-audio-entry-expanded { height: 0 !important;}
```



[template("cat-subscribe")]