

Kwebcast module

Last Modified on 06/26/2025 2:03 pm IDT

 This article is designated for administrators.

About

The **Kwebcast module** is used to activate and configure Kaltura Webcasting (also known as Town Hall).



The Kwebcast module uses live entries. If Kwebcast is enabled, the [liveentry module](#) must be disabled.

Configure

1. Go to your Configuration Management page, and click the **Kwebcast** module. You can also navigate directly using a link:

https://{your_KMS_URL}/admin/config/tab/kwebcast.

ModulesCustom / core

Channeltv

Classroomcapture

Emaillogin

Foryoupage

Hostnames

Kalturaai

Kwebcast

Newrow

Raptmedia

The Kwebcast page displays.

Configuration Management

Server Tools

Backup Configuration
Player replacement tool

Global

Application

AddNew

Auth

Categories

Channels

Client

Debug

EmailService

EmailTemplates

Gallery

Header

Icalendar

Languages

Login

MediaCollaboration

Metadata

Moderation

My-media

Navigation

Player

PlaylistPage

Recaptcha

Search

Security

Kwebcast

Module Info

Note

Currently the Kwebcast module uses live entries, therefore if it's enabled the live entry module must be disabled.

enabled

Yes ▾

Enable the Kwebcast module.

applicationName

This configuration value is passed to the webcast application

applicationLogoUrl

https://assets.quillbot.com/images

Url to a logo image which is passed to the webcast application

dvrEnabled

Yes ▾

Enable DVR for Webcast Events

transcodingProfile

Passthrough ▾

Which transcoding profile will be used for Webcast Events?

liveBroadcasterRole

Specific Users / Groups ▾

Who can create Webcast Events? If a role is selected, any role above it will also be able to create Webcast Events.

allowedUsers

Select users / groups who are allowed to create Webcast Events

1

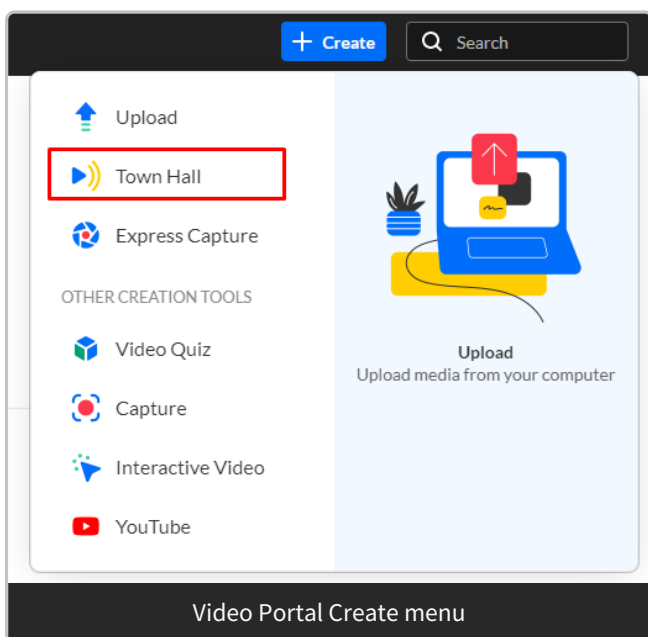
DELETE

user

Select Users / Groups

2. Configure the following:

enabled - Set to 'Yes' to enable the module. When enabled, the Town Hall tool is displayed on the **Create** menu to users in the Video Portal and KAF applications:



applicationName - You can brand the Kaltura Webcasting application with a specific name (perhaps the name of your company). This name displays as the application is loading. Type the name.

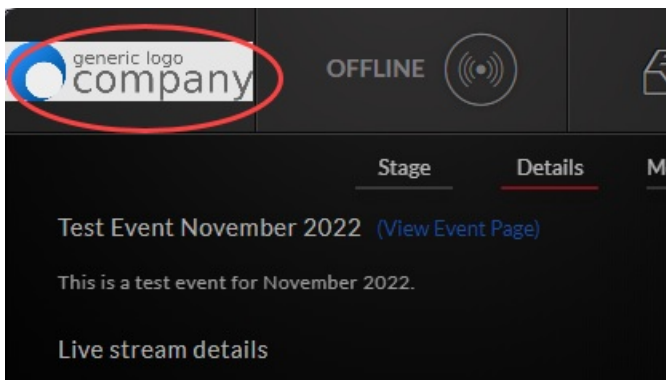


If this field is left empty, the default Kaltura branding name is used.

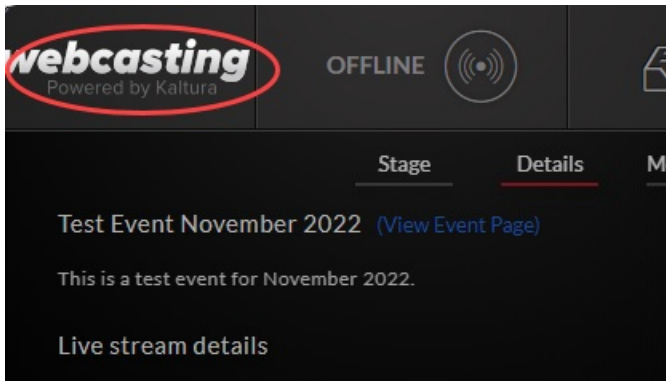


For more information on the Kaltura Webcasting application, see [Introduction to Kaltura Town halls \(webcasting\)](#).

applicationLogoUrl - You can brand the Kaltura Webcasting application with a specific logo. This logo displays in the upper left corner of the application. Type the URL to a logo image (the logo size should be 156x78 pixels).



If the field is left empty, the default Kaltura brand logo is used.



dvrEnabled - Enabling DVR feature allows your viewers to pause, rewind, and continue during the event. After a viewer resumes playing, the event continues from where the viewer left off/paused.

transcodingProfile - Choose how your Webcast stream is processed: **Passthrough** and **Cloud transcode**.

- **Passthrough** (Live): Streams the original source without any changes. No additional flavors are created. To offer multiple resolutions, set them up using your own encoder.
- **Cloud Transcode** (Live+): Kaltura automatically creates multiple streaming flavors from the source. Choose from three preset packages - SD, HD, or HD+ - each offering different resolutions and bitrates.

To learn more, please visit [How to Set Transcoding Profiles for Live Streaming](#).

liveBroadcasterRole - Control who can create Webcast Events. Choose from the following options:

- privateOnly Role
- adminRole
- unmoderatedAdmin Role
- specific users/groups

If you choose **Specific Users/Groups**, an additional field displays:

- **allowedUsers** - Add users or groups by clicking **+Add "allowedSelfServedUsers"**.

liveBroadcasterRole Specific Users / Groups

Who can create Webcast Events? If a role is selected, any role above it will also be able to create Webcast Events.

allowedUsers

Select users / groups who are allowed to create Webcast Events

1 DELETE

user @kaltura.com Select Users / Groups

2 DELETE

user @kaltura.com Select Users / Groups

+ Add "allowedUsers"

Click **Select Users/Groups**. Start typing a name, select it, and click **Submit**. Repeat to add more.

DELETE

user

DELETE

user Select Users / Groups

Select Users / Groups

Enter user name

Enter user id or name

Cancel Submit

To remove someone, click the red DELETE button.



Do not update or delete any of the following four fields. Their values are automatically assigned by the system upon saving. Changing or deleting these assigned values will compromise the functionality of the Webcasting application.

- WinProducerAppUiConfID
- MacProducerAppUiConfID
- PlayerUiconfId
- BSEPlayerUIconfID



The system assigns the player automatically, but you can customize it.

See [Introduction to the Player studio](#).

EnableHomepagePreview - Enable auto-playing video previews inside the carousel on the Webcasts Homepage. If set to Yes, additional functionality displays:

- **HomepagePreviewPlayerId** - The Player ID for the player used on the Webcasts Homepage page. The player version must be v7.

EnableQnA - Turn on moderated Q&A for live webcasts. When enabled, Moderators will see the Moderator View. This is a global setting, but you can turn it off for individual events.

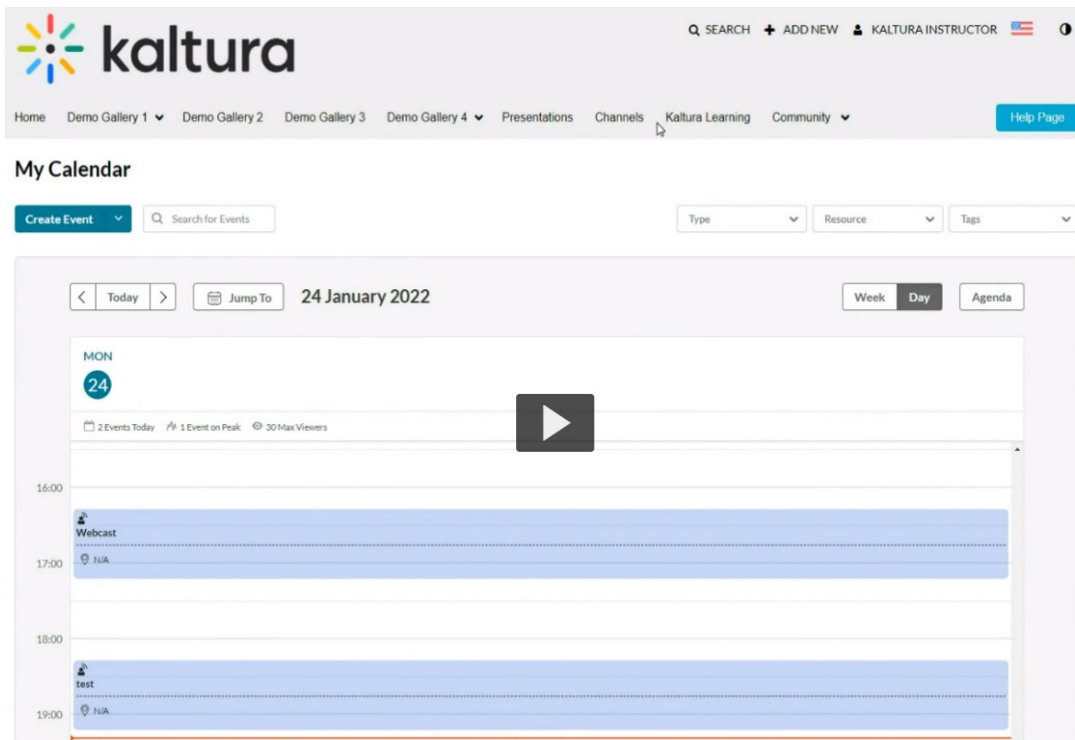
EnablePolls - Allow polls during webcast events. This is only supported in the Kaltura webcasting app. It's a global setting, but can also be turned off per event.

showInSearch - Select which fields should appear in the search.

autoStartEventOnBroadcast - Choose whether the webcast should start automatically when the encoder begins streaming. If disabled, the event producer must manually start the event by clicking Go Live in KMS or the webcasting app.

liveSchedulingEnabled - Allows all event admins to view and edit all past and future events in the Webcasting Calendar, even if they didn't create them. See [The Webcasting Calendar](#) for additional information.

admins - Click **+Add "admins"** to assign specific users, groups, or roles as Webcasting admins. These users can create, schedule, and manage events and will have access to the Webcasting Calendar:



exportResources - Click [Download Resources List](#) to export the current list of resources (rooms, cameras, encoders, etc.).

manageResources - Click [Upload a resource definition file](#) to upload a csv file. See the example format [here](#).

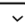
SupportSelfServed - Set to No by default. Select Yes to enable self-serve webcasting. This automatically enables Preview Live mode and disables **autoStartEventOnBroadcast**, so producers must click Go Live in KMS or the webcasting app to start the event.

allowedRolesForSelfService - Choose who can create Self-Serve Webcasts. Choose from the following options:

- privateOnly Role
- adminRole
- unmoderatedAdmin Role
- specific Users/Groups

If you choose **Specific Users/Groups**, an additional field displays:

allowedSelfServedUsers - Click **+Add "allowedSelfServedUsers"**, then click **Select Users/Groups** and type in the username or ID. Click **Submit**. Repeat for multiple users.

allowedRolesForSelfService Specific Users / Groups 

Who can create a Self Serve Webcast? if a role is selected, any role above it will also be able to create a Self Serve Webcast.

allowedSelfServedUsers

Select users who are allowed to launch self served Webcast Events

1 **DELETE**

user ██████████@kaltura.com Select Users / Groups

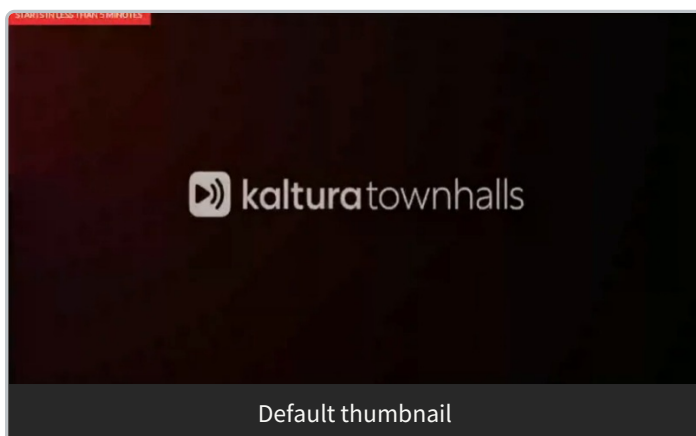
2 **DELETE**

user ██████████@kaltura.com Select Users / Groups

+ Add "allowedSelfServedUsers"

To delete users/groups, click the red **DELETE** button.

defaultThumbnailUpload - All webcast entries use the default Kaltura Townhalls thumbnail unless you upload a custom one here. Recommended size: 1140×672 pixels. You can still override the thumbnail for individual events in the Thumbnails tab on the Edit Entry page. See the Thumbnail section of [Editing a Webcasting Event](#) for more information.



SupportConferenceIntegration - Enable this to allow video conference integration with Webcast Events. Selecting 'Yes' displays an additional field:

- **allowedRolesForIntegration** - Choose which roles can launch video conference integrations. Higher roles automatically inherit access. Choose from the following options:
 - privateOnly Role
 - adminRole
 - unmoderatedAdmin Role

- specific Users/Groups
- If you choose **Specific Users/Groups**, an additional field displays:
 - **allowedVideoConferenceIntegrationUsers** - Select users who are allowed to launch video conference integrations from Webcast events. Click **+Add "allowedVideoConferenceIntegrationUsers"**, then click **Select Users/Groups** and type in the username or ID. Click **Submit**. Repeat for multiple users.

thumbnailRotator - Enables a thumbnail rotator on hover, switching between currently live events when multiple streams are running.

showLastArchivedDefault - Set to Yes to display a link to the most recent archived video at the top of the live page by default. To let entry owners change this per event, set showLastArchived to Yes in the [Entrydesign](#) module.



Entry-level settings override the Kwebcast default.

leanEntryPage - Optimizes live broadcasts for large-scale events. You can learn more in our article [Lean webcast page](#).

3. Click **Save**.



For additional information about Kaltura Webcasting, see the [Kaltura Webcasting Administrator's Guide](#).