

Share and embed media in Video Portal

Last Modified on 08/05/2025 10:56 am IDT

 This article is designated for all users.

About

Kaltura makes it easy to share and embed videos into websites or other platforms using an HTML iFrame code. Depending on how your administrator has configured embedding, you may encounter one of two scenarios:

- **Regular embed:** The video is accessible directly through the embed, without requiring a login or special permissions.
- **Secure embed:** The embed may prompt viewers to log in to view the video, as this method enforces access permissions to ensure only authorized users can watch the content. These settings are managed by your administrator in the [embed module](#).

Kaltura also allows embedding playlists. See our article [Share and embed playlists](#) for more information.



To use Kaltura videos with H5P Interactive Video, you'll need a direct video file URL (for example, MP4 or streaming URL) instead of the iFrame embed code. For guidance on generating video URLs in various formats, check out [this article about the Playmanifest API](#). This ensures seamless compatibility with H5P's player.

Ways of sharing

- **Direct link** - Copy and paste the link provided.
- **Email** - An email automatically opens with the link, ready to send.
- **Embed code** - Copy and paste the embed provided.
- **Social networks** - Click on the icon of the desired platform.



Access permissions may apply. Ensure you have the necessary rights to share and embed the video.



The instructions below are for non-Theming users. If you have [Theming](#) enabled,

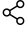
please refer to our article [Share and embed media - Theming](#).

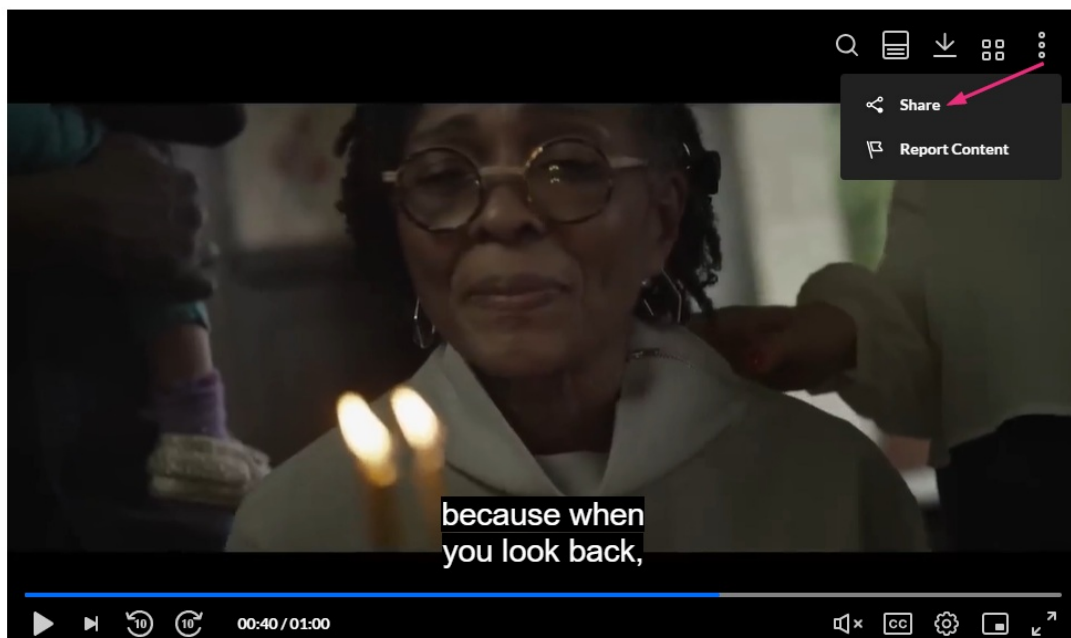
Via the player

If your player has been configured for sharing, you can share media using the share icon as follows:



Visit our article [Share & embed](#) for more information about configuring your player.

1. Navigate to the desired video.
2. Click the **share icon**  located in the upper right corner of the player.

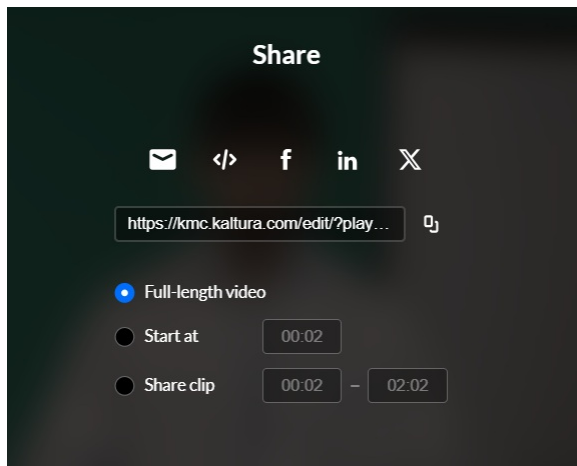


Wishes

♥ 0 ▶ 83 💬 0

From [Louise Smith](#) November 07, 2024

The Share window displays.



3. Choose from the following share methods:

Direct link

1. Click the **copy icon**  next to the link.

A confirmation message displays at the top of the screen: *Link copied to clipboard.*

2. Paste the link into the desired site.


Email

1. Click the **email icon** .

An email page opens.

2. Enter the 'To' details and click Send.

Embed code

1. Click the **embed icon** .
2. Paste the embed code wherever you want to share or embed the video.

Social networks

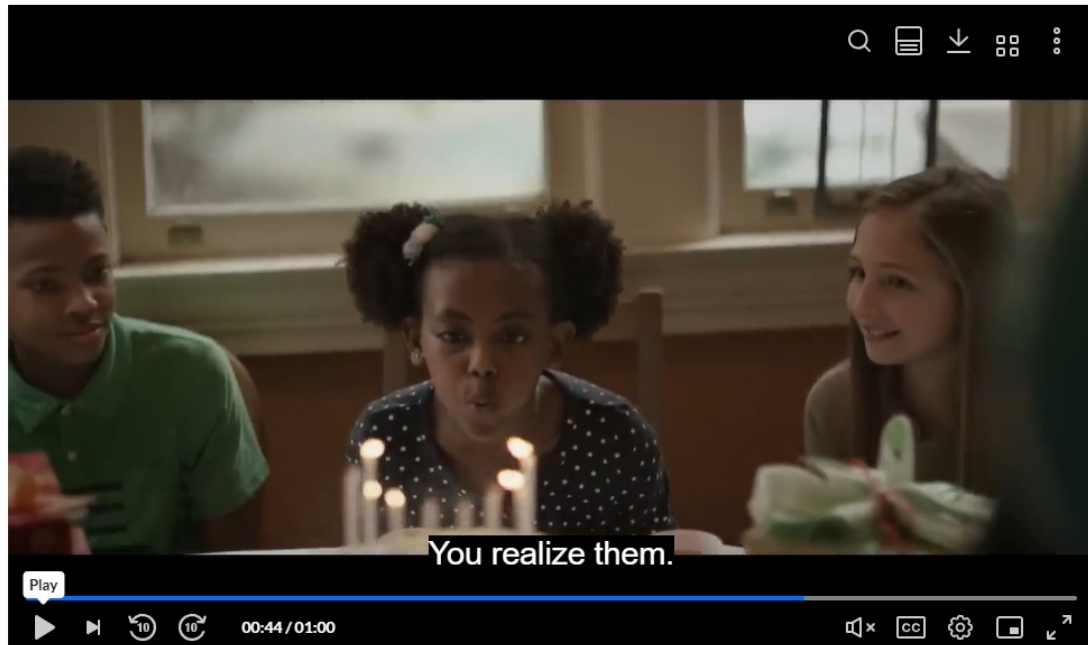
Click the **icon** for the platform you want to share on (e.g., Facebook, X). Add your message, then share it directly.

Start at - You can share the video from a specific time. Choose 'Start at' and enter the time according to the format given (00.00.00). For example, if you want a video to start at 1 minute and 30 seconds into the video, enter 00.01.30

Share clip - You can share a segment of a video by choosing 'Share clip' and then selecting the start and end position of the segment you'd like to share. For example, if you want a video to start at 1 minute and 30 seconds into the video, enter 00.01.30, and then enter the time for the end time.

Via the media page

1. Navigate to the desired video.
2. Click the **Share** button under the media player.



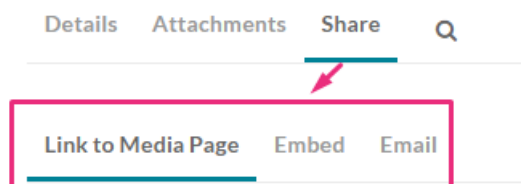
Wishes

0 83 0

From Louise Smith November 07, 2024



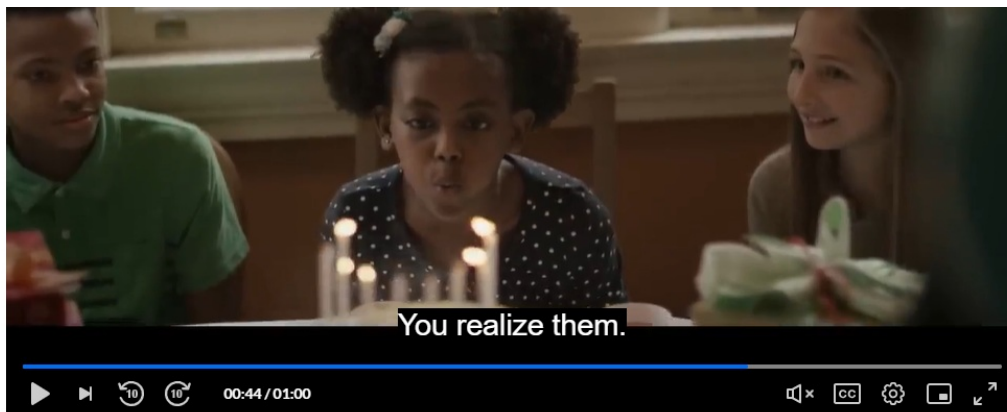
The options for sharing display.



3. Choose from the following share methods:

Link to Media Page

1. On the **Link To Media Page** tab, copy the link (ctrl +C).



Wishes

♥ 0 ▶ 83 💬 0

From Louise Smith November 07, 2024

Details Share 🔍

ACTIONS ▾

Link to Media Page Embed Email

Copy link to share

https://4834032.mediaspace.kaltura.com/media/Wishes/1_5nwhkez

Start Time:

☐ Start at

00:00:00 🔁

2. **Start Time** - To have a video start playing from a specific point, check the box next to 'Start at' and enter the time according to the format give (00.00.00). For example, if you want a video to start at 1 minute and 30 seconds into the video, you would enter 00.01.30.
3. Paste the link accordingly.



If the media is restricted, only authorized users can access the shared media page.

Embed

1. Click the **Embed** tab.




If iFrame embedding is restricted by your administrator, the option to select embed will not be available.

Link to Media Page **Embed** Email

Grabbing the embed code will make this media **public** to the world and override all entitlements defined in MediaSpace.

```
<iframe id="kaltura_player" type="text/javascript" src="https://cdnapisec.kaltura.com/p/4834032/embedPlaykitJs/ui/conf_id/509526922?
iframeembed=true&entry_id=1_wjp3c7bt&config[provider]={"widgetId":"","1_sljnx12"}&config[playback]={"startTime":0}" style="width:
400px;height: 285px;border: 0;" allowfullscreen webkitallowfullscreen mozAllowFullScreen allow="autoplay "; fullscreen "; encrypted-media
"" sandbox="allow-downloads allow-forms allow-same-origin allow-scripts allow-top-navigation allow-pointer-lock allow-popups allow-
```

Start Time: ☐ Start at 

Player Size

Responsive Sizing: ☐

2. **Start Time** - To have a video start playing from a specific point, check the box next to 'Start at' and enter the time according to the format give (00.00.00). For example, if you want a video to start at 1 minute and 30 seconds into the video, you would enter 00.01.30
3. Choose **Player Size**: 608 w x 402 h / 400 w x 285 h / 304 w x 231 h
4. **Responsive sizing** - toggle on to use responsive sizing




Responsive sizing refers to the ability of a video player to automatically adjust its dimensions to fit different screen sizes and devices, ensuring optimal viewing experiences across various platforms.

5. Copy the embed code (ctrl + C) and paste accordingly.



If you try to grab an embed code for a video from a category or channel that restricts this option, you'll see the following notification. This setting is managed by your administrator.

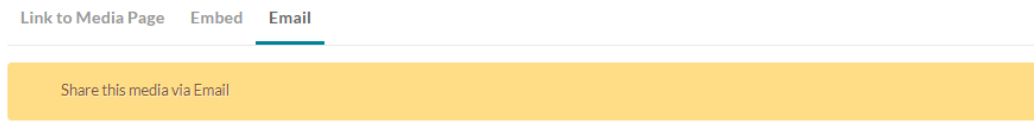
Details **Share**  ACTIONS ▾

Link to Media Page **Embed** Email

Grabbing of this content is possible only from locations which allow it. Please see the "Appears In" field under the Details tab for potential locations which may allow publishing. If no allowing location is found, please contact your administrator, or reach out to the content owner directly

Email

1. Click the **Email** tab.



An email page opens.

2. Enter the 'To' details and click Send.



You can also embed Kaltura media using a "referenceId", but either the "entryId" or the "widgetId" must also be included.