

What Can I Build with “Federated Search – Interactive” Data?

Last Modified on 09/27/2019 1:55 am IDT

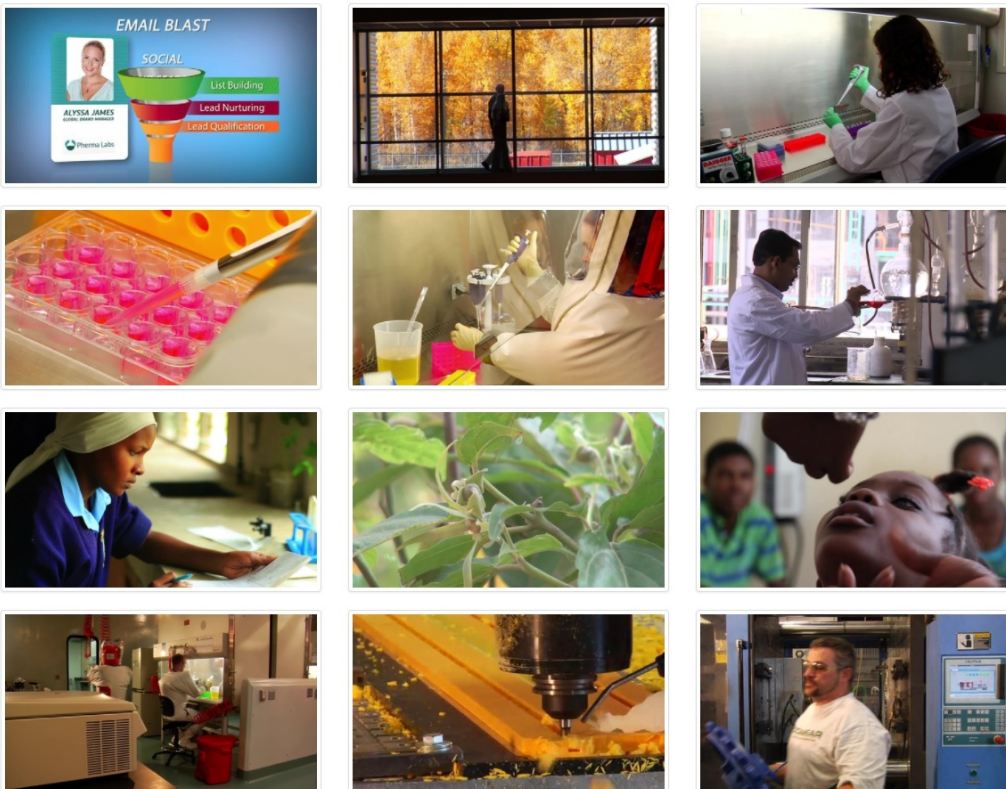
The following UI examples are general and are based on actual customer use cases of widgets/portlets (Consumers), which can be built using the module’s data. The UI is not provided by the module.

Examples

- **Example 1:** Full-page, responsive video galleries
- **Example 2:** A personalized video gallery portlet on my portal’s homepage, showing the X most recently published videos, most relevant to the authenticated portal user.
- **Example 3:** Incorporate video results into my portal’s interactive search, returning only portal videos published meeting the search criteria; defaulting results to Most Viewed; also allowing user to interactively request alternative ranking (Most Recent, Most Liked, Alphabetical).
- **Example 4:** A Video News widget on our Employees portal, always showing the freshest content from the Corporate Communications channel I manage in the video portal, also keeping a specific video “sticky” so it always loads first in the player.

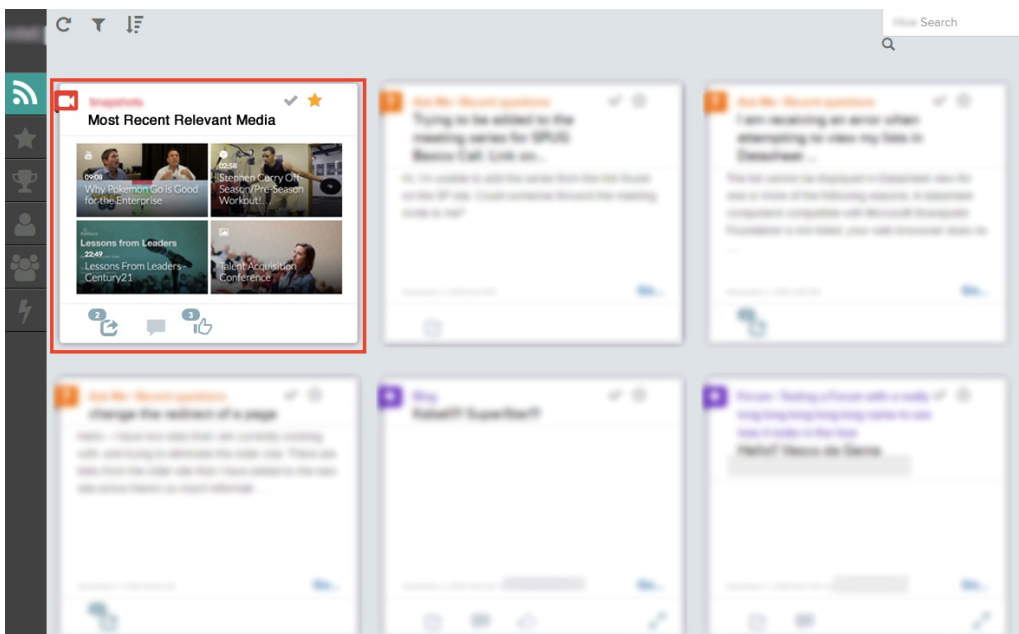
Example 1: Full-page, responsive video galleries





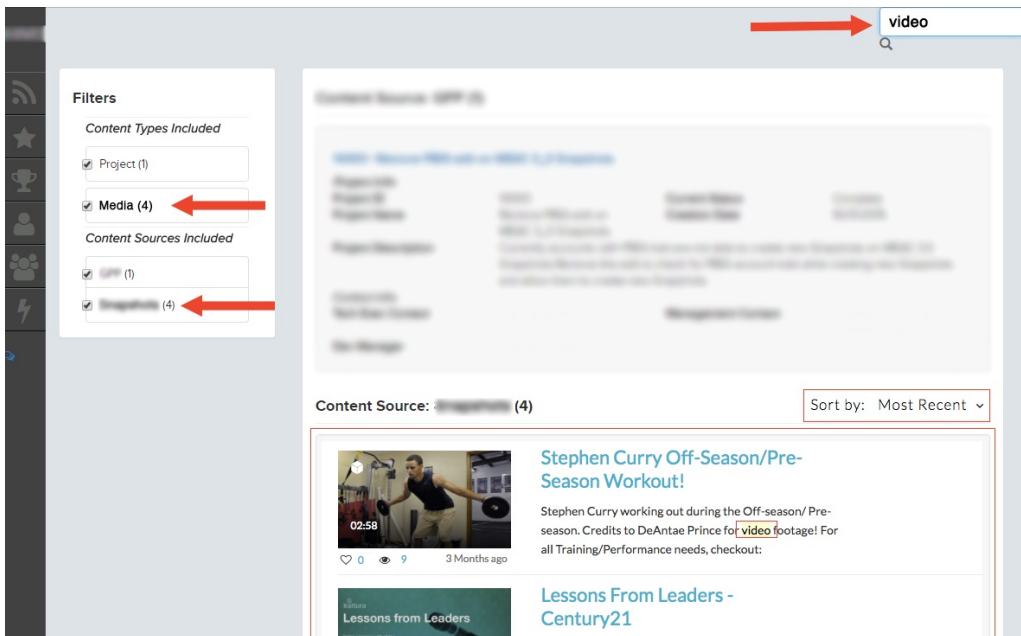
Top

Example 2: A personalized video gallery portlet on my portal's homepage, showing the X most recently published videos, most relevant to the authenticated portal user.



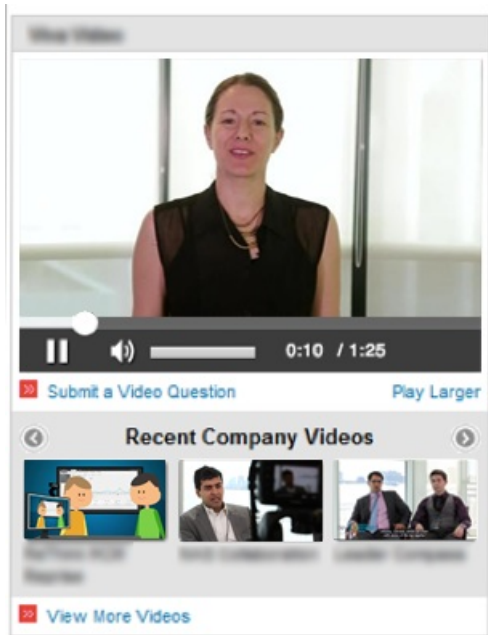
Top

Example 3: Incorporate video results into my portal’s interactive search, returning only portal videos published meeting the search criteria; defaulting results to Most Viewed; also allowing user to interactively request alternative ranking (Most Recent, Most Liked, Alphabetical).



[Top](#)

Example 4: A Video News widget on our Employees portal, always showing the freshest content from the Corporate Communications channel I manage in the video portal, also keeping a specific video “sticky” so it always loads first in the player.



[Top](#)



[Back to Federated Search Interactive Module](#)
