

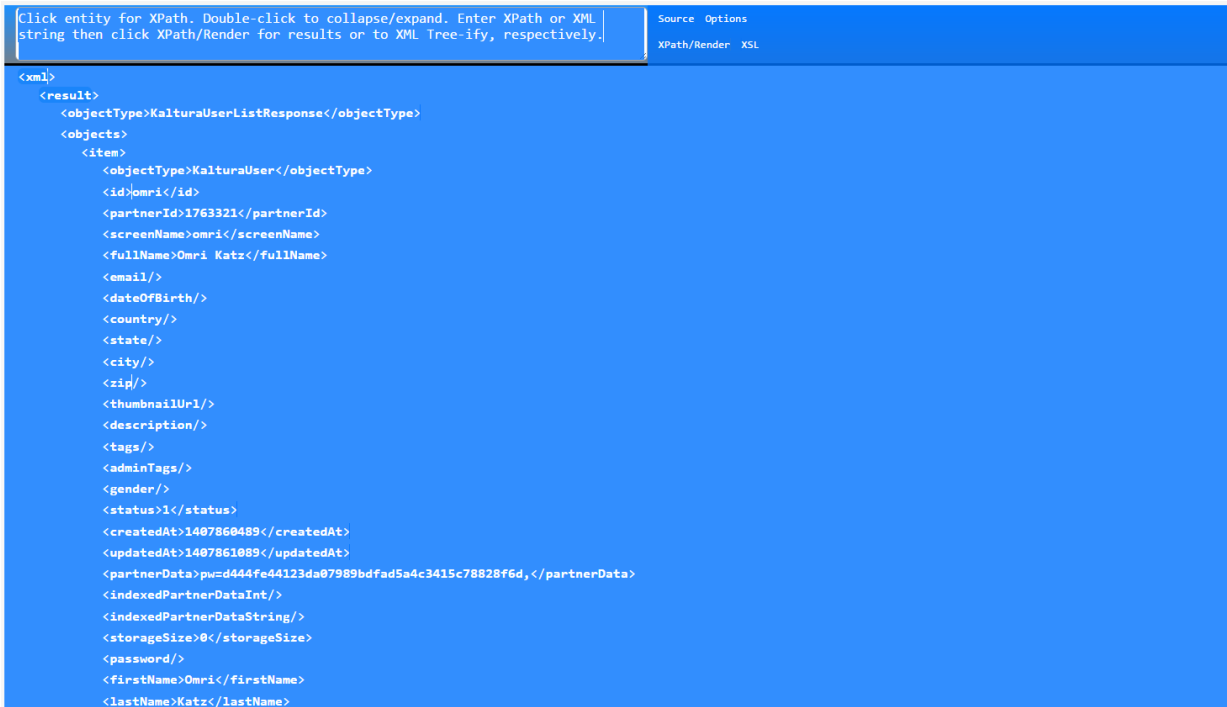
How to convert an XML file to CSV or Excel Spreadsheet

Last Modified on 09/09/2024 12:25 pm IDT

 This article is designated for administrators.

Follow the steps below to convert an API call output given in XML format to a CSV or Excel Spreadsheet.

1. Open the XML file and select all the text by clicking Ctrl + A then copy it by clicking Ctrl+C.

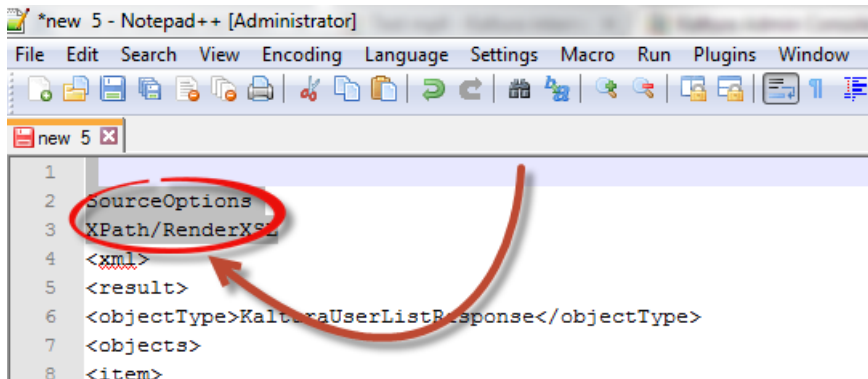


```
<xml>
<result>
  <objectType>KalturaUserListResponse</objectType>
  <objects>
    <item>
      <objectType>KalturaUser</objectType>
      <id>omri</id>
      <partnerId>1763321</partnerId>
      <screenName>omri</screenName>
      <fullName>Omri Katz</fullName>
      <email/>
      <dateOfBirth/>
      <country/>
      <state/>
      <city/>
      <zip/>
      <thumbnailUrl/>
      <description/>
      <tags/>
      <adminTags/>
      <gender/>
      <status>1</status>
      <createdAt>1407860489</createdAt>
      <updatedAt>1407861089</updatedAt>
      <partnerData>pw=d444fe44123da07989bdfad5a4c3415c78828f6d,</partnerData>
      <indexedPartnerDataInt/>
      <indexedPartnerDataString/>
      <storageSize>0</storageSize>
      <password/>
      <firstName>Omri</firstName>
      <lastName>Katz</lastName>
    </item>
  </objects>
</result>
</xml>
```

2. Open Notepad ++ and paste the text from the previous step.

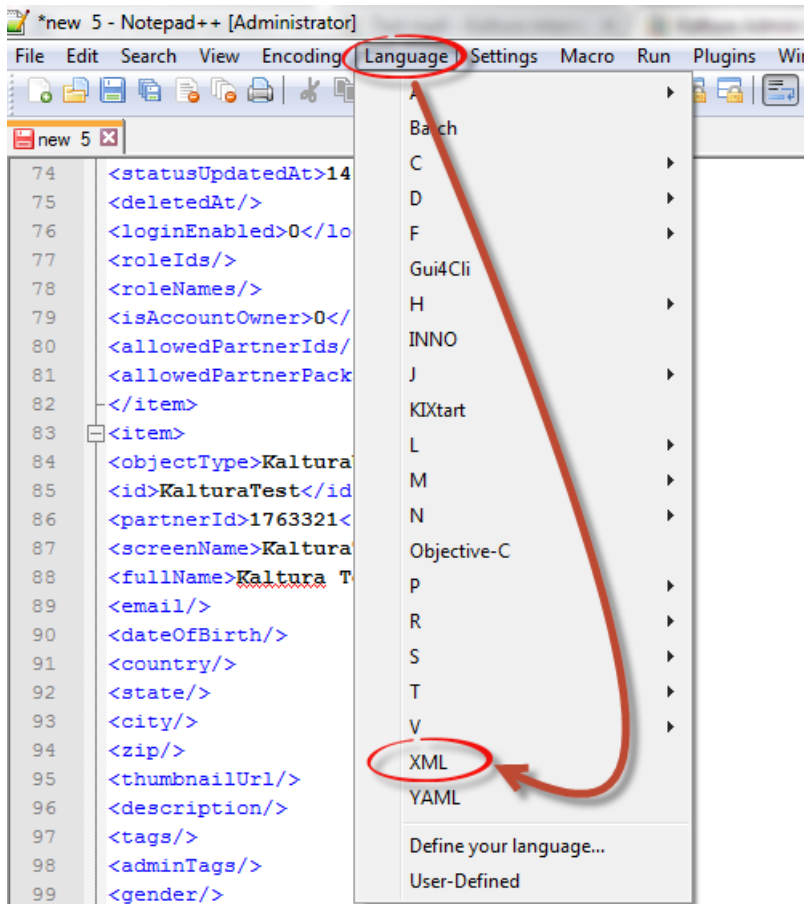
****You will need to delete the first two lines in the document:**

**"SourceOptions
XPath/RenderXSL"**

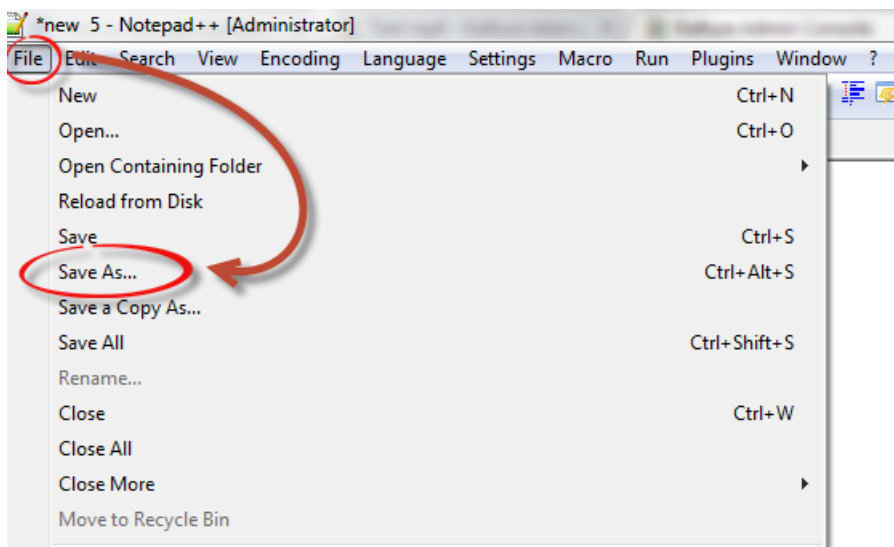


```
*new 5 - Notepad++ [Administrator]
File Edit Search View Encoding Language Settings Macro Run Plugins Window ?
new 5 x
1
2 SourceOptions
3 XPath/RenderXSL
4 <xml>
5 <result>
6 <objectType>KalturaUserListResponse</objectType>
7 <objects>
8 <item>
```

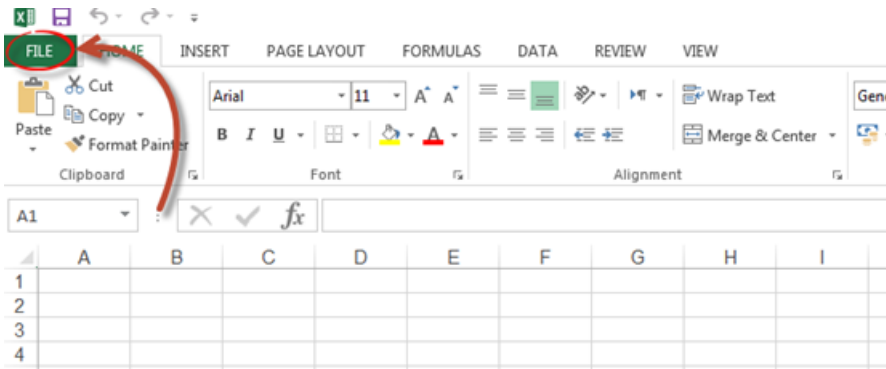
3. From the top menu, open the **Language** sub-menu, then select **XML**.



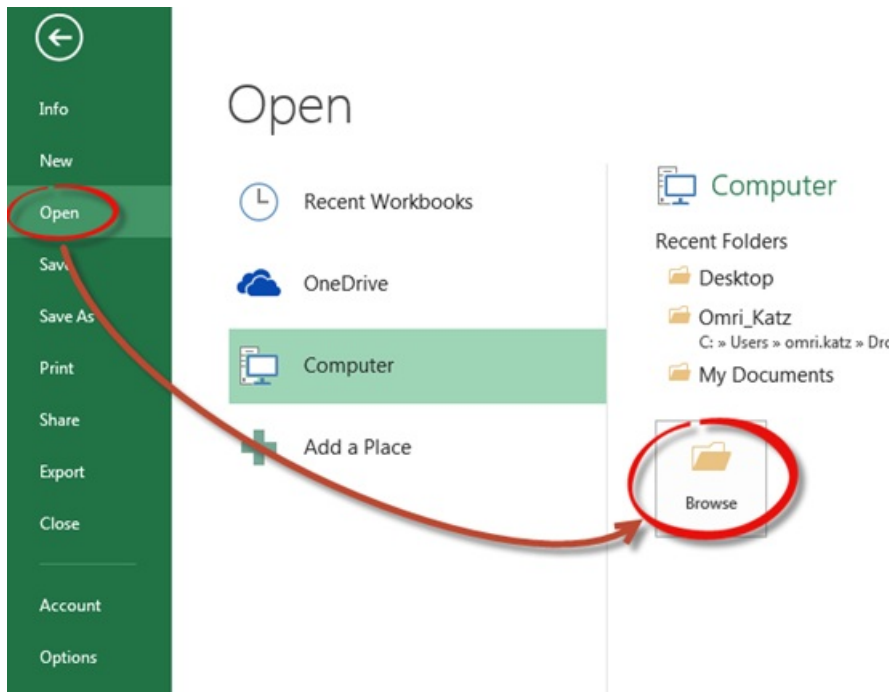
4. After you choose the correct language, click **File**, then **Save As**. Choose where to save the file and click **Save**.



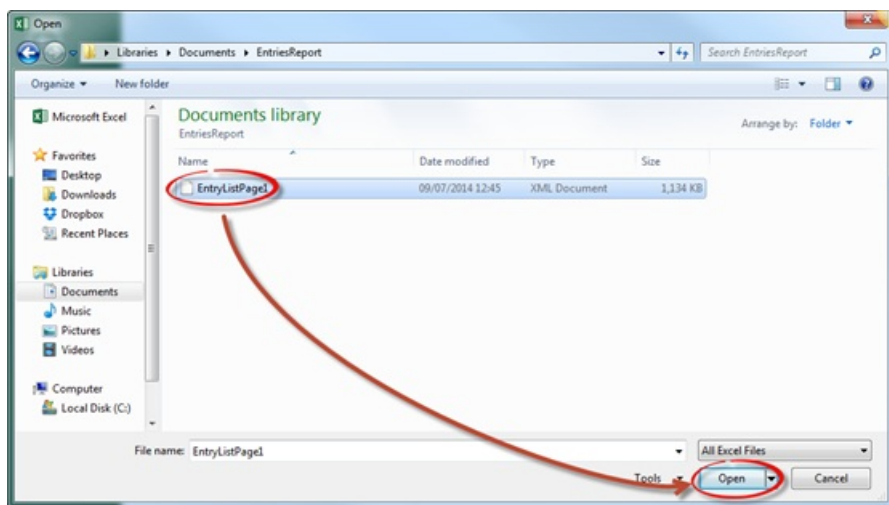
5. Open **Excel** and click on **File** from the ribbon bar.



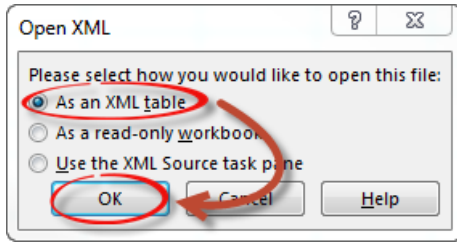
6. Choose **Open** and **Browse**.



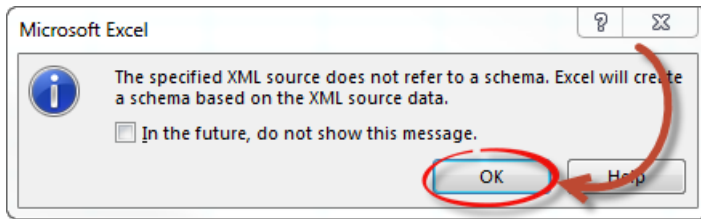
7. Locate the file you saved in the previous steps and choose **Open**.



8. A new pop-up box is displayed. Choose As an **XML table** and click **OK**.



9. Another pop-up is displayed, to alert you that this source has no schema. Ignore this error and click **OK**.



10. You should now see the Excel sheet populated with all the correct fields.

1	id	type	mediaType	comment	quantity	source	searchProvider	searchProviderName	credits	mediaUrl	details
2	KalturaAssetEntry	Response	KalturaAssetEntry		1	3191452	6			http://kaltura.kaltura.com/3191452/3191452/entry/3191452	
3	KalturaAssetEntry	Response	KalturaAssetEntry		1	3191452	6			http://kaltura.kaltura.com/3191452/3191452/entry/3191452	
4	KalturaAssetEntry	Response	KalturaAssetEntry		1	3191452	6			http://kaltura.kaltura.com/3191452/3191452/entry/3191452	
5	KalturaAssetEntry	Response	KalturaAssetEntry		1	3191452	6			http://kaltura.kaltura.com/3191452/3191452/entry/3191452	
6	KalturaAssetEntry	Response	KalturaAssetEntry		1	3191452	6			http://kaltura.kaltura.com/3191452/3191452/entry/3191452	
7	KalturaAssetEntry	Response	KalturaAssetEntry		1	3191452	6			http://kaltura.kaltura.com/3191452/3191452/entry/3191452	
8	KalturaAssetEntry	Response	KalturaAssetEntry		1	3191452	6			http://kaltura.kaltura.com/3191452/3191452/entry/3191452	
9	KalturaAssetEntry	Response	KalturaAssetEntry		1	3191452	6			http://kaltura.kaltura.com/3191452/3191452/entry/3191452	
10	KalturaAssetEntry	Response	KalturaAssetEntry		1	3191452	6			http://kaltura.kaltura.com/3191452/3191452/entry/3191452	
11	KalturaAssetEntry	Response	KalturaAssetEntry		1	3191452	6			http://kaltura.kaltura.com/3191452/3191452/entry/3191452	
12	KalturaAssetEntry	Response	KalturaAssetEntry		1	3191452	6			http://kaltura.kaltura.com/3191452/3191452/entry/3191452	
13	KalturaAssetEntry	Response	KalturaAssetEntry		1	3191452	6			http://kaltura.kaltura.com/3191452/3191452/entry/3191452	
14	KalturaAssetEntry	Response	KalturaAssetEntry		1	3191452	6			http://kaltura.kaltura.com/3191452/3191452/entry/3191452	
15	KalturaAssetEntry	Response	KalturaAssetEntry		1	3191452	6			http://kaltura.kaltura.com/3191452/3191452/entry/3191452	
16	KalturaAssetEntry	Response	KalturaAssetEntry		1	3191452	6			http://kaltura.kaltura.com/3191452/3191452/entry/3191452	
17	KalturaAssetEntry	Response	KalturaAssetEntry		1	3191452	6			http://kaltura.kaltura.com/3191452/3191452/entry/3191452	
18	KalturaAssetEntry	Response	KalturaAssetEntry		1	3191452	6			http://kaltura.kaltura.com/3191452/3191452/entry/3191452	
19	KalturaAssetEntry	Response	KalturaAssetEntry		1	3191452	6			http://kaltura.kaltura.com/3191452/3191452/entry/3191452	
20	KalturaAssetEntry	Response	KalturaAssetEntry		1	3191452	6			http://kaltura.kaltura.com/3191452/3191452/entry/3191452	
21	KalturaAssetEntry	Response	KalturaAssetEntry		1	3191452	6			http://kaltura.kaltura.com/3191452/3191452/entry/3191452	
22	KalturaAssetEntry	Response	KalturaAssetEntry		1	3191452	6			http://kaltura.kaltura.com/3191452/3191452/entry/3191452	
23	KalturaAssetEntry	Response	KalturaAssetEntry		1	3191452	6			http://kaltura.kaltura.com/3191452/3191452/entry/3191452	
24	KalturaAssetEntry	Response	KalturaAssetEntry		1	3191452	6			http://kaltura.kaltura.com/3191452/3191452/entry/3191452	
25	KalturaAssetEntry	Response	KalturaAssetEntry		1	3191452	6			http://kaltura.kaltura.com/3191452/3191452/entry/3191452	
26	KalturaAssetEntry	Response	KalturaAssetEntry		1	3191452	6			http://kaltura.kaltura.com/3191452/3191452/entry/3191452	
27	KalturaAssetEntry	Response	KalturaAssetEntry		1	3191452	6			http://kaltura.kaltura.com/3191452/3191452/entry/3191452	
28	KalturaAssetEntry	Response	KalturaAssetEntry		1	3191452	6			http://kaltura.kaltura.com/3191452/3191452/entry/3191452	
29	KalturaAssetEntry	Response	KalturaAssetEntry		1	3191452	6			http://kaltura.kaltura.com/3191452/3191452/entry/3191452	
30	KalturaAssetEntry	Response	KalturaAssetEntry		1	3191452	6			http://kaltura.kaltura.com/3191452/3191452/entry/3191452	
31	KalturaAssetEntry	Response	KalturaAssetEntry		1	3191452	6			http://kaltura.kaltura.com/3191452/3191452/entry/3191452	
32	KalturaAssetEntry	Response	KalturaAssetEntry		1	3191452	6			http://kaltura.kaltura.com/3191452/3191452/entry/3191452	
33	KalturaAssetEntry	Response	KalturaAssetEntry		1	3191452	6			http://kaltura.kaltura.com/3191452/3191452/entry/3191452	
34	KalturaAssetEntry	Response	KalturaAssetEntry		1	3191452	6			http://kaltura.kaltura.com/3191452/3191452/entry/3191452	
35	KalturaAssetEntry	Response	KalturaAssetEntry		1	3191452	6			http://kaltura.kaltura.com/3191452/3191452/entry/3191452	
36	KalturaAssetEntry	Response	KalturaAssetEntry		1	3191452	6			http://kaltura.kaltura.com/3191452/3191452/entry/3191452	
37	KalturaAssetEntry	Response	KalturaAssetEntry		1	3191452	6			http://kaltura.kaltura.com/3191452/3191452/entry/3191452	
38	KalturaAssetEntry	Response	KalturaAssetEntry		1	3191452	6			http://kaltura.kaltura.com/3191452/3191452/entry/3191452	
39	KalturaAssetEntry	Response	KalturaAssetEntry		1	3191452	6			http://kaltura.kaltura.com/3191452/3191452/entry/3191452	
40	KalturaAssetEntry	Response	KalturaAssetEntry		1	3191452	6			http://kaltura.kaltura.com/3191452/3191452/entry/3191452	
41	KalturaAssetEntry	Response	KalturaAssetEntry		1	3191452	6			http://kaltura.kaltura.com/3191452/3191452/entry/3191452	