



Annoto - Admin Guide

 This article is designated for administrators.

This module adds Annoto in-video collaboration and insights solutions to Kaltura Video Portal (aka KMS) and LMS integrations (Kaltura Application Framework aka KAF).

To configure the module, Kaltura administrators should log in to the KMS/KAF Management Console (<MediaSpace site Url>/admin) and navigate to the Annoto module.

 If this module is not available, please get in touch with your Kaltura representative to enquire about adding it.

 **Limitation** - For the Annoto and Kaltura users, Single Sign-on integration, doesn't work in content that was embedded outside of KMS.

General Settings

- **enabled** - Enable/Disable the Annoto module.
- **apiKey** - Which was received from Annoto, this is provided per Partner ID.
- **ssoSecret** - Single Sign-On secret matching the API Key provided by Annoto.
- **privateDiscussions** - Enables discussions to be private in the scope of Course/Category/Channel. If disabled, discussions on same video entries will be public across Courses/Categories/Channels.

Permissions Settings

- **activatedByDefault** - If enabled, by default Annoto is active on all the Videos for all Courses/Categories/Channels. ([DEPRECATED Option](#))
- **activationEditAllowed** - If enabled, Authorized Users will be able to activate/deactivate Annoto for specific Courses/Categories/Channels/Videos.


Annoto Activate/Deactivate Permissions

activationEditAllowedRoles - Allows to select which roles/users/groups can activate/deactivate Annoto in Courses/Categories/Channels/Videos.

The dropdown has the following options:

- Specific Users
- privateOnlyRole
- adminRole
- unmoderatedAdminRole

If a role is selected, any role above it will also be able to activate/deactivate Annoto.

 Regardless of the role settings below, only users who have access to Kaltura Entry/Channel/Category settings are Authorized to activate/deactivate Annoto.

ACTIVATE/DEACTIVATE Permissions Based on Users/Groups

To Authorize only specific users or groups to activate/deactivate Annoto, choose “Specific Users” in the activationEditAllowedRoles dropdown, as you can see in [this video](#) or follow the following steps:

- Once “Specific Users” is chosen, a submenu will be available for adding authorized users and/or groups.
- Click on “activationEditAllowedUsers” to add Users/Groups

activationEditAllowedUsers

Select users/groups who are allowed to activate/deactivate Annoto. Selected users must be of *PrivateOnly* role or above.
 + Add "activationEditAllowedUsers"

- Click on “Select Users/Groups” to add Users/Groups to the list

activationEditAllowedUsers

Select users/groups who are allowed to activate/deactivate Annoto. Selected users must be of *PrivateOnly* role or above.

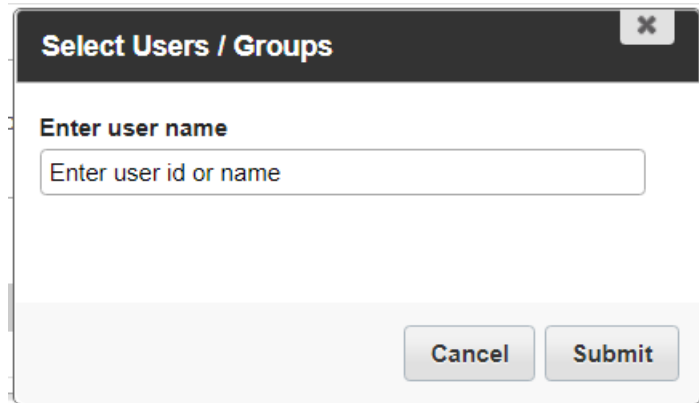
* **DELETE**

user

Select Users / Groups

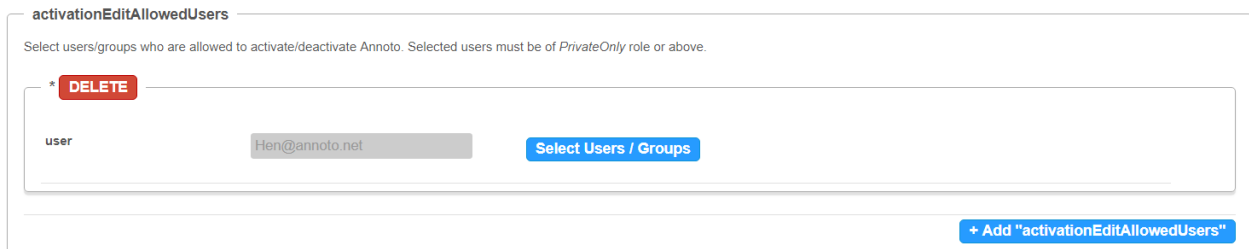
+ Add "activationEditAllowedUsers"

- Enter the user or group (once you start typing you will see suggestions related to what you entered)



A modal dialog box titled "Select Users / Groups" with a close button (X) in the top right corner. Inside the dialog, there is a label "Enter user name" above a text input field containing the placeholder text "Enter user id or name". At the bottom right of the dialog are two buttons: "Cancel" and "Submit".

For example, in the below image, we can see Hen@annoto.net is currently the only one that can activate/deactivate Annoto. All other users will not have the option of Activate/Deactivate Annoto in Courses/Categories/Channels/Videos.



A configuration interface for "activationEditAllowedUsers". It includes a title bar, a description: "Select users/groups who are allowed to activate/deactivate Annoto. Selected users must be of PrivateOnly role or above.", and a table with one row containing the email "Hen@annoto.net". Above the table is a red "DELETE" button. To the right of the table is a blue "Select Users / Groups" button. At the bottom right is a blue button labeled "+ Add 'activationEditAllowedUsers'".

- ✓ As a best practice, We suggest creating a Kaltura Users Group named for example "annoto_admins" and adding only this group to activationEditAllowedUsers list. For more information on Groups visit : [Kaltura Groups](#).

Additional Activation settings

- **disableUserAnalytics** - If checked, User detailed analytics will be disabled and not shown in the Annoto dashboard.
- **guestUsersAllowed** - If checked, not-logged-in Users will be able to see Annoto Widget. [KMS only]
- **loginPath** - URL path for user login page. If provided, Users will have login prompts in the widget to add a comment/vote/etc.

Player Embed Sizes

- **playerEmbedSizesOverride** - Enables overriding the BSE player sizes (for the optimal Annoto user experience).
- **playerEmbedSizes** - Defines sizes that can be used for embedded players. Defines the player size in the following format: {width}x{height}.
- Recommended sizes:



- Large: 1200*628
- Medium: 1024*576
- Small: 900*506

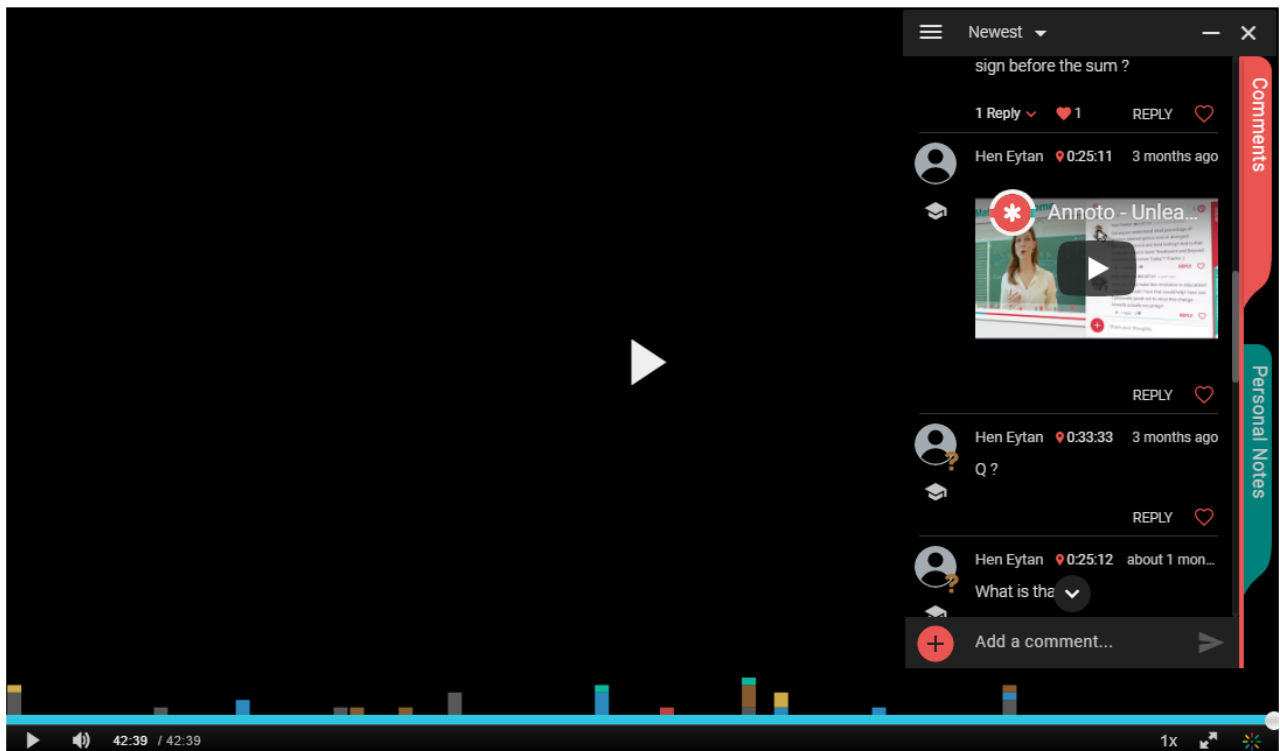
Plugin Settings

- **enablePlayerPlugin** - Enables the built-in Player Plugin. If disabled, annoto plugin would not be injected into the Kaltura player by the module. Allows using Kaltura player with custom (non-production) Annoto plugin.
- **deployment** - Annoto Deployment Region.
- **playerPluginCDN** - CDN host of the Annoto plugin assets (read-only).
- **analyticsCDN** - CDN host of the Annoto analytics assets (read-only).

Integration

- **appTokenId** - ID of the App Token.
- **appToken** - Value of the App token.
- **appTokenHash** - Hash type used to generate the App token.
- **uiConfigId** - Player UI config ID to be used by Annoto.

The following image demonstrates the Kaltura V2 player with Annoto enabled.



Troubleshooting

Symptom	Resolution
After enabling the Module and entering the apiKey, the ssoSecret, and enabling Annoto on the media, Annoto is still not displaying.	We need to verify that the client does not have an alias domain, instead of the traditional partner_id.mediaspace.com domain, as the apiKey and ssoSecret that Annoto provides are generated based on the domain
	Verify that the apiKey and ssoSecret are not switched by mistake.

[template("cat-subscribe")]