

# The Kaltura Player Studio Edit View

 This article is designated for administrators.

## Overview

In the Player Studio, administrators view and manage all players in a single table layout. This guide will explore the Player Studio's edit view.

## Access the Edit View

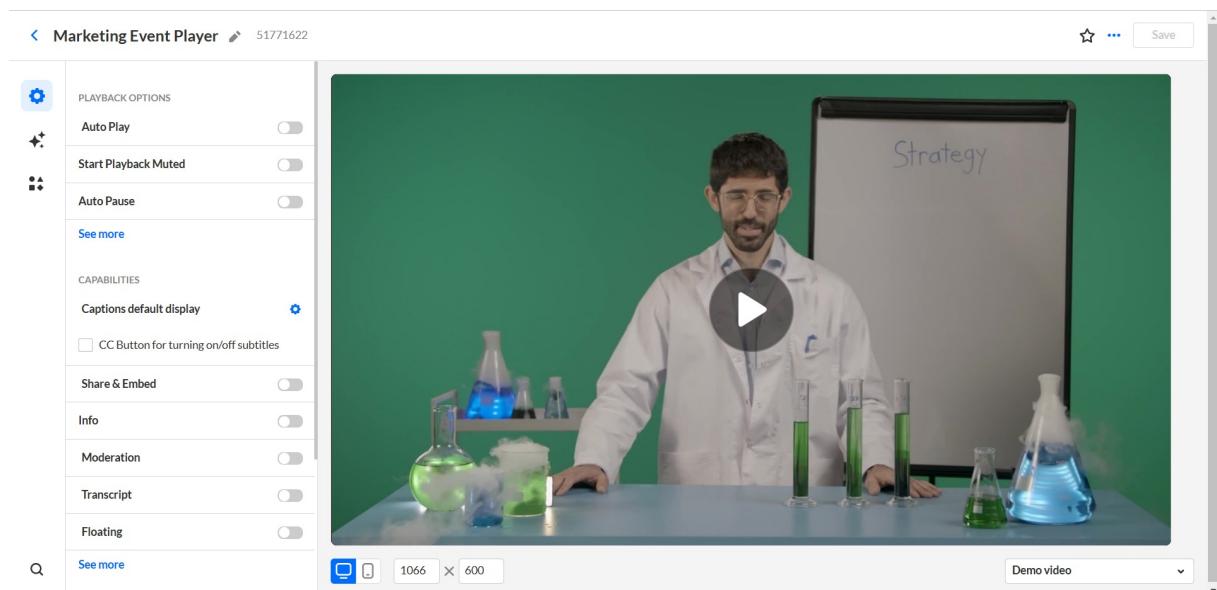
Once in the Player Studio, you can configure the player via the edit view. There are two ways to access the edit view.

- Click on the desired player in the Player List.

**Or**

- Click on the three dots button to the right of the desired player and choose **Edit** from the list.

The edit view displays. The default opening tab is **Player Settings**.

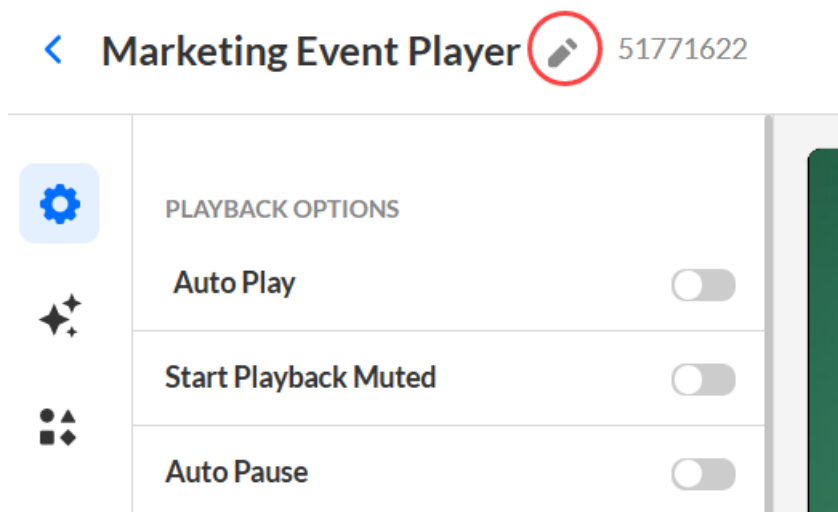


## Editing Functionality

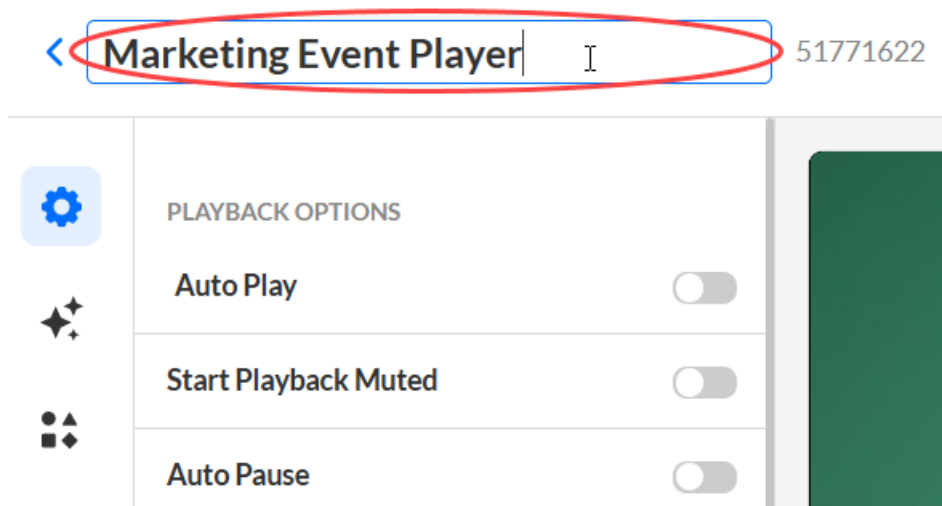
### Change the Player's Name

The player's name is listed in the upper left corner of the screen. If you would like to change the player name, use the following steps:

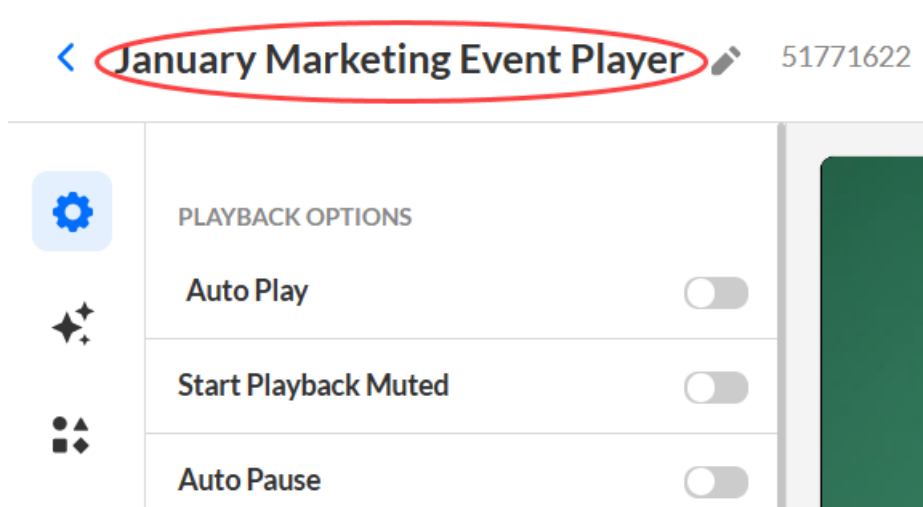
1. Click the pencil icon to the right of the name.



The Player Name field displays.



2. Type the name.
3. Click out of the field or press Enter. The new name is displayed.



## Mark/Unmark as a Favorite

If this player is marked as a favorite the star in the upper right corner of the screen is yellow.

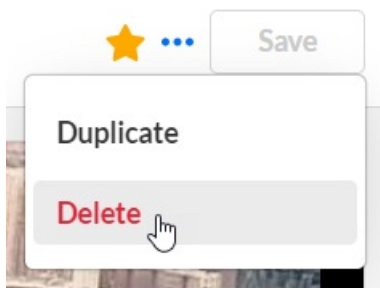


If this player is not marked as a favorite and you would like to mark this player as a favorite, click the star. It turns yellow.

## Delete a Player

If you would like to delete this player, use the following steps:

1. Click the three-dot menu in the upper right corner of the screen to the left of the **Save** button and choose Delete.



The Delete screen displays with a message that you are about to delete the player. You can click **Cancel** to cancel the command.

## Delete

Are you sure you want to delete "January Marketing Event Player" ?

[Cancel](#)

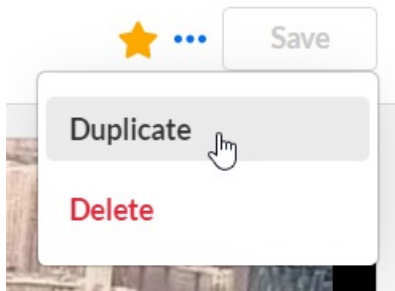
[Delete](#)

2. Click **Delete** to confirm.

## Duplicate a Player

If you would like to duplicate this player, use the following steps:

1. Click the three-dot menu in the upper right corner of the screen to the left of the **Save** button and choose Duplicate.



The Duplicate screen displays with a message that you are about to duplicate the player. You can click **Cancel** to cancel the command.

## Duplicate

Are you sure you want to duplicate "January Marketing Event Player" ?

Player name

Cancel

Duplicate

2. Type a name for the new player.

## Duplicate

Are you sure you want to duplicate "January Marketing Event Player" ?

Player name

Cancel

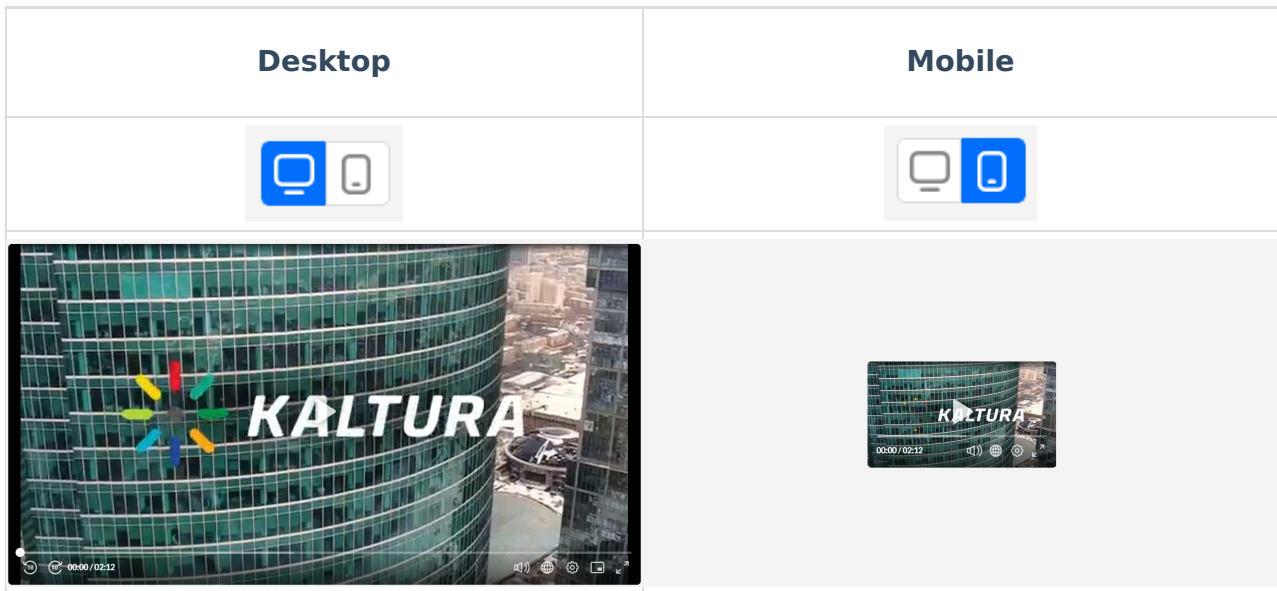
Duplicate

3. Click the **Duplicate** button. The new player is added to the Players List.

## Choose your Preview Preference

### Change Device for Preview

You may preview the player on Desktop or Mobile as you make configurations. Simply click on the desired format in the lower left corner of the screen.



### Change Resolution for Preview

You may preview the player in varying resolutions. Type the desired resolution in the fields in the lower left corner of the screen. In our example below, the resolution for the preview is set at 1112 X 602.



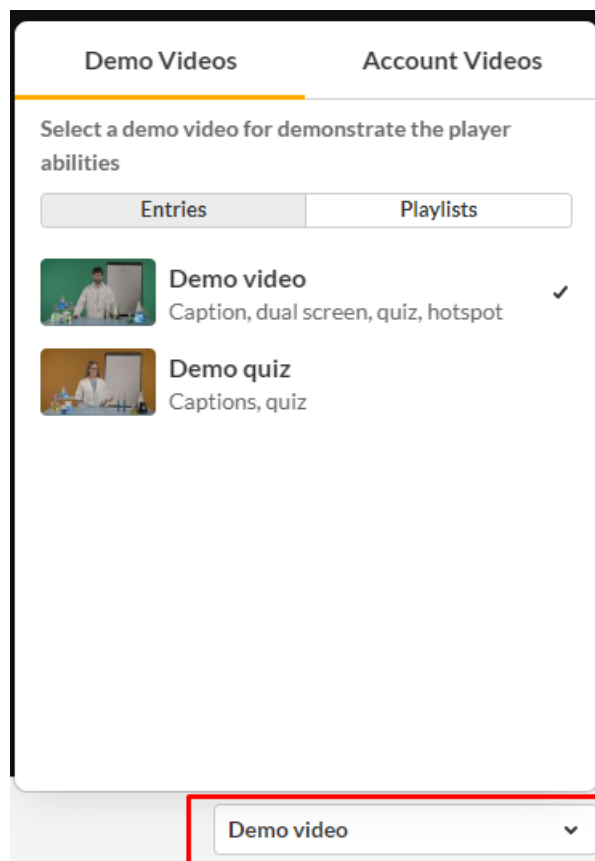
### Choose a Demo or Account Video for Preview

The advanced preview experience allows you to choose from **Demo Videos** or **Account Videos** to preview your player configuration. The Entries and Playlist tabs consist of demo videos that were preset with captions, dual screen, quiz, and hotspots plugins ready to test and preview on the player.

Use the following steps:

1. Click the arrow to the right of the preview video name.

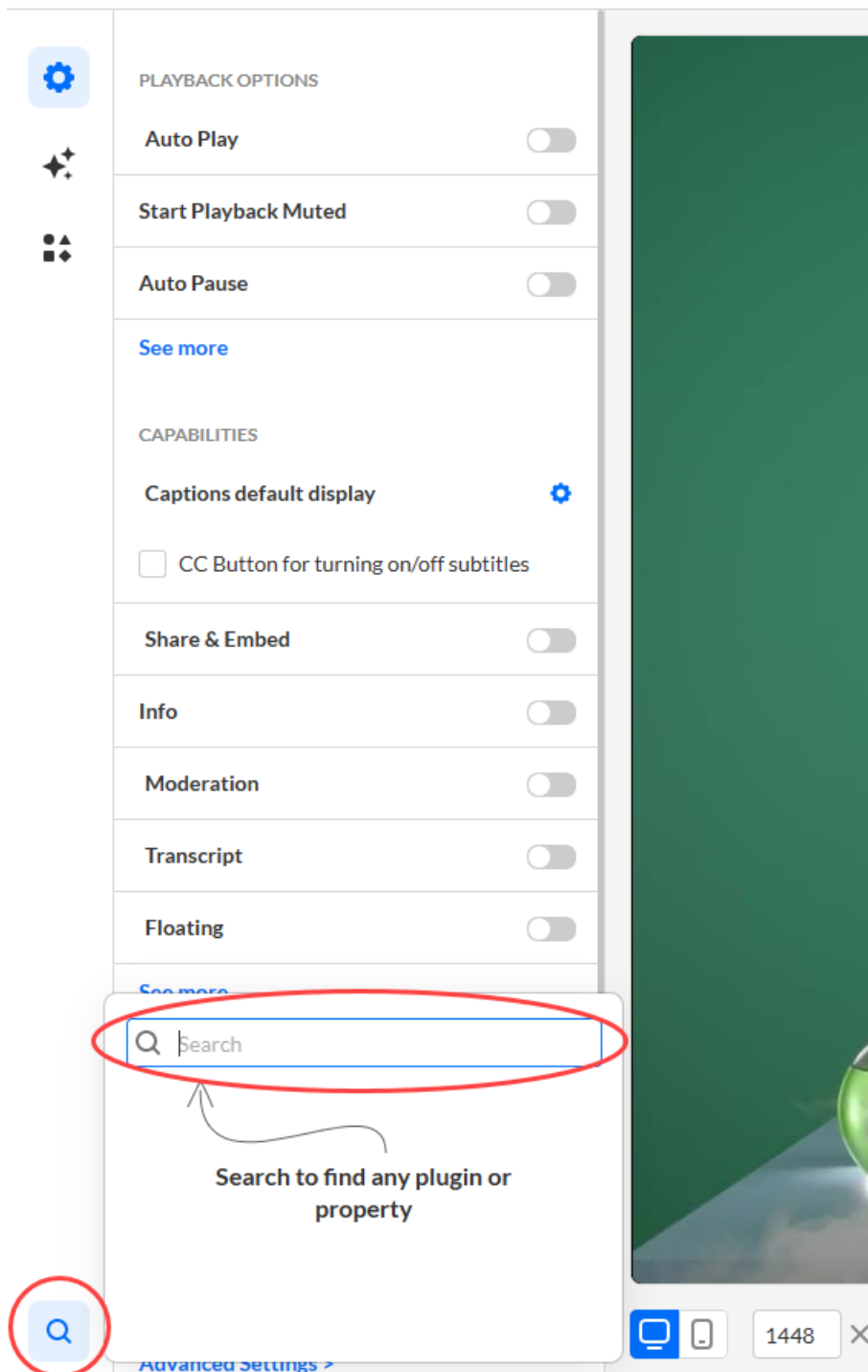
The list of demo and account videos is displayed. Both single entries and playlists are available with demo and account videos.



2. Select a video to preview your player configuration.

## Search

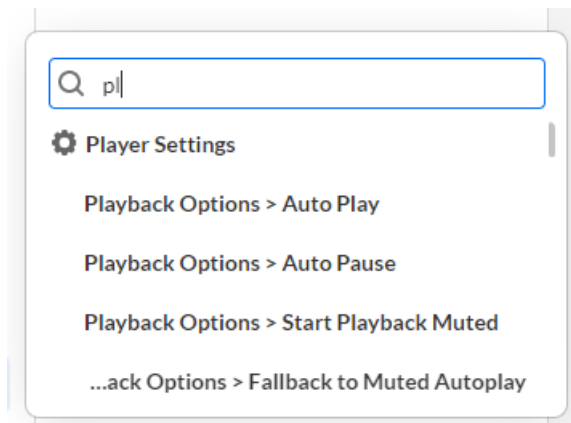
Click the magnifying glass icon in the lower left corner of the screen. The Search box displays.



All player's settings are searchable via the search box. The search will render results including the path of the settings. Type all or part of a settings name in the search box, and click on the desired name from the offered results.

Once a setting is selected, the search will jump to its location, open, and highlight this setting for you.

In our example, we are searching for "pl".



## Save the Player Configuration

When you are finished configuring the player, be sure to click the **Save** button in the upper right corner of the window.



The **Save** button is activated only if there are unsaved changes. Otherwise, the button is grayed out.

## Player Customization

For player customization, please see the following guides:

[The Kaltura Player Studio Admin Guide - Player Settings](#)

[The Kaltura Player Studio Admin Guide - Top Bar, Interactive, Bottom Bar Settings](#)

[The Kaltura Player Studio Admin Guide - Visual](#)

[The Kaltura Player Studio Admin Guide - Integrations](#)

[template("cat-subscribe")]