

## Share

 This article is designated for all users.

## Overview

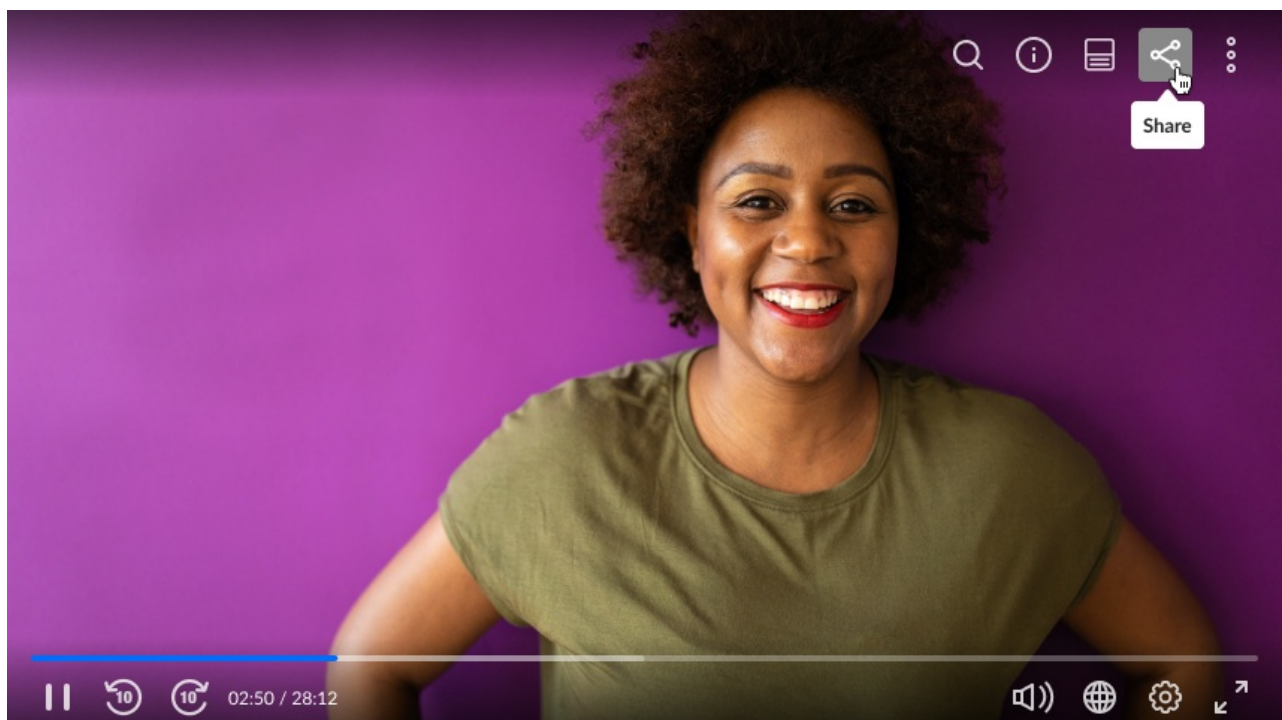
The share plugin appears on the top right corner of the screen and offers the viewer the ability to share content to social media channels, email, or as a direct link. Viewers can share the entire video or from a specific time stamp.

## Setup

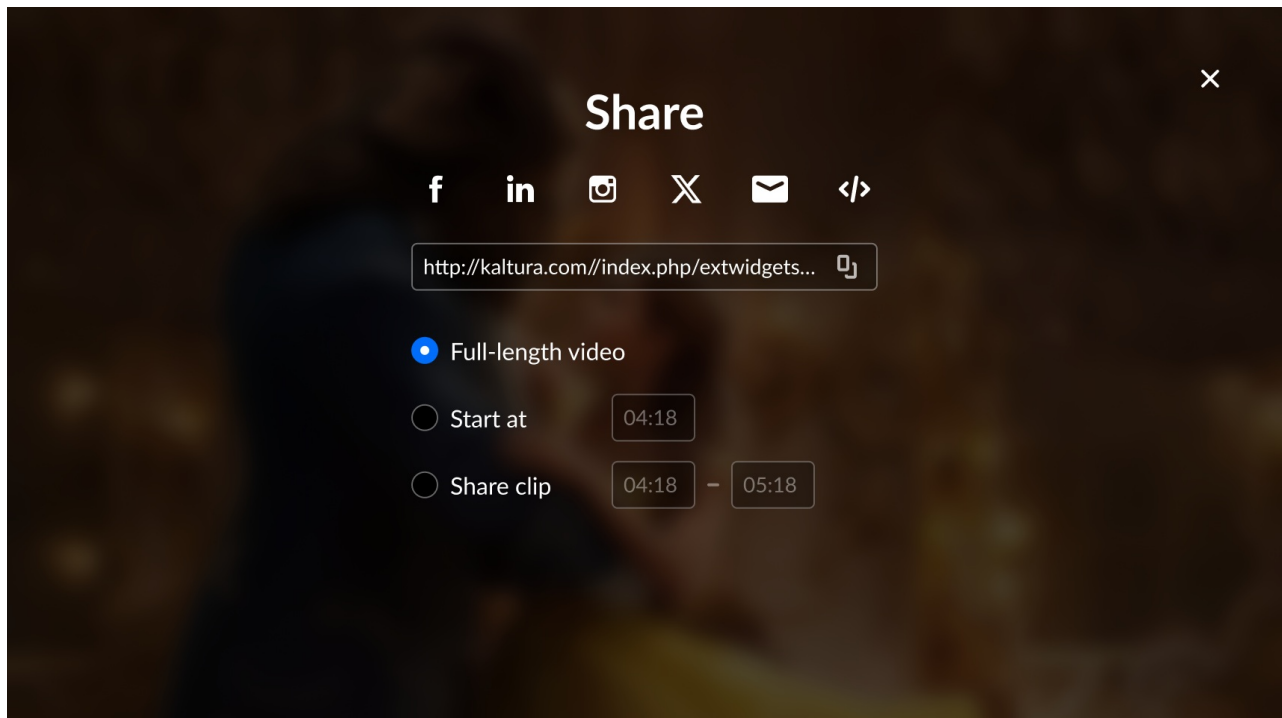
To learn how to set the **Share & Embed** plugin on the player, see [The Kaltura Player Studio Admin Guide](#).


## Display

Click on the Share icon to display the sharing options.



Select a sharing option and enter the relevant details to share your content.



 The sharing options are set by your administrator. If you don't see all of these options, ask your administrator to enable them.

## Features

- Share via URL - this URL will override the current page-sharing URL.
- Share via embed URL -  
`{embedBaseUrl}/p/{partnerId}/embedPlaykitjs/uiconf_id/{uiConfId}?  
 iframeembed=true&entry_id={entryId}`
- Start at - you can share the video from a specific time. Check the box **Start at** and enter the time you want the video to start. You can now share the link to start at the specified time.
- Share clip - you can share a segment of a video by choosing **Share clip** and then selecting the start and end position of the segment you'd like to share.
- Use native share - invokes the native sharing mechanism of your device. ([Web Share API](#))
- Share via email
- Share via social networks, such as Facebook, LinkedIn, and X (formerly Twitter).

## Try it out



[template("cat-subscribe")]