



Annoto

 This article is designated for administrators.

This module adds Annoto's in-video collaboration assessment and insights solutions to Kaltura Video Portal (aka KMS) and LMS integrations (Kaltura Application Framework aka KAF). To learn more, see [Introduction to Annoto](#).

For KAF and LMS integrations, the [Annotokaf](#) module is required to be enabled as well.

 If this module is not available, please get in touch with your Kaltura representative to enquire about adding it.

 Note: You can use Annoto with Kaltura videos embedded outside of LMS (KAF) and MediaSpace (KMS), please contact support@annoto.net for more information.

Prerequisites

Send the following information to the Annoto team:

1. Send the KAF/KMS domain and any alias domains if you have one.
2. To activate the module, the Annoto team will send back the following information:
 - **API Key**
 - **Secret**
3. Go to your KMS/KAF Management Console (<Your_Kaltura_site_Url>/admin) and navigate to the Annoto module.
 - Enable the Annoto module
 - Fill in the appropriate fields with the API Key and Secret

enabled	<input type="button" value="Yes"/>	
apiKey	<input type="text" value="eyJhbGciOiJIUzI1NiJ9.ZmNkOGN"/>	API Key provided by Annoto for your site.
ssoSecret	<input type="text" value="519fa7fb3340fd16f92b2e1bbacbf"/>	Single Sign On secret matcing the API Key provided by Annoto for your site.

4. Click **Save**.

Grading Support

If you are using Annoto in an LMS via the Kaltura KAF the following to enable grading support.

- Send the field called "endpoint" under the Webhook section in the Annoto Module.
- Make sure [AnnotoKAF](#) Module is existing and enabled.

- Annoto Team will send you the `jwtUrl` and `integrationKey` values.

Webhook
Collapse

Webhook integration setup

<code>jwtUrl</code>	<input type="text"/>	JWKS URL for validating the webhook messages, provided by Annoto.
<code>integrationKey</code>	<input type="text"/>	Integration Key provided by Annoto.
<code>endpoint</code>	<input type="text" value="https://2302901.kaf.kaltura.com/ar"/>	Target URL to where Annoto should send the webhook messages.

⚠ Note: If you see it empty, please enable/disable the Annoto Module.

Video as Comment

Integration parameters are required for them to enable [video as a comment feature](#).

1. Go to your KMS/KAF Management Console (`<Your_Kaltura_site_Url>/admin`) and navigate to the Annoto module.
2. Copy the text of the following integration configuration:

- **`appTokenId`**
- **`appToken`**
- **`appTokenHash`**
- **`uiConfigId`**

Integration
Collapse

Integration Configuration

<code>appTokenId</code>	<input type="text" value="1_0ceecjlp"/>	ID of the App Token.
<code>appToken</code>	<input type="text" value="638714baf7c99778e0bcaa6533ac"/>	Value of the App token.
<code>appTokenHash</code>	<input type="text" value="SHA256"/>	Hash type used to generate the App token.
<code>uiConfigId</code>	<input type="text" value="52243762"/>	Player UI config ID to be used by Annoto.

⚠ Note: If you see it empty, please enable/disable the Annoto Module

Annoto Module Settings Overview

General Settings

- **`enabled`** - Enable/Disable the Annoto module.
- **`apiKey`** - Provided by Annoto per Partner ID.
- **`ssoSecret`** - Provided by Annoto. Single Sign-On secret matching the API Key.

enabled	<input type="button" value="Yes"/>	
apiKey	<input type="text" value="eyJhbGciOiJIUzI1NiJ9.ZmNkOGN"/>	API Key provided by Annoto for your site.
ssoSecret	<input type="text" value="519fa7fbf3340fd16f92b2e1bbacbf"/>	Single Sign On secret matching the API Key provided by Annoto for your site.

Webhook (Only KAF)

Configure webhook integration so that advanced features can be enabled, such as enabling Annoto's reporting grading to the LMS.

- **jwtksUrl** - JWKS URL for validating the webhook messages, provided by Annoto.
- **integrationKey** - Integration Key provided by Annoto.
- **Endpoint** - Target URL to where Annoto should send the webhook messages. (The following field are auto-populated with the disable/enablement of the module.)

Webhook

Webhook integration setup

jwtksUrl	<input type="text" value="https://auth.eu.annoto.net/jwks/pK"/>	JWKS URL for validating the webhook messages, provided by Annoto.
integrationKey	<input type="text" value="ZP6v5s5xGP3T5GWBEFSCw"/>	Integration Key provided by Annoto.
endpoint	<input type="text" value="https://2302901.kaf.kaltura.com/at"/>	Target URL to where Annoto should send the webhook messages.

Annoto Preferences Permissions Settings

- **activationEditAllowedRoles** -

Who can change the [Annoto](#) Preferences? if a role is selected, any role above it will also be able to change the Annoto Preferences.

- **Specific Users**
- **privateOnlyRole**
- **adminRole**
- **unmoderatedAdminRole**

If **Specific Users** or groups are selected, see the following video tutorial and steps:

- Once "Specific Users" is chosen, a submenu will be available for adding authorized users and/or groups.
- Click on "activationEditAllowedUsers" to add Users/Groups

activationEditAllowedUsers

Select users/groups who are allowed to activate/deactivate Annoto. Selected users must be of *PrivateOnly* role or above.

[+ Add "activationEditAllowedUsers"](#)

- Click on "Select Users/Groups" to add Users/Groups to the list

activationEditAllowedUsers

Select users/groups who are allowed to activate/deactivate Annoto. Selected users must be of *PrivateOnly* role or above.

* **DELETE**

user

Select Users / Groups

[+ Add "activationEditAllowedUsers"](#)

- Enter the user or group (once you start typing you will see suggestions related to

Select Users / Groups

Enter user name

Enter user id or name

Cancel

Submit

what you entered)

For example, in the below image, we can see Hen@annoto.net is currently the only one that can set the Annoto Preferences. All other users will not have the option of changing the Annoto Preferences in Courses/Categories/Channels.

activationEditAllowedUsers

Select users/groups who are allowed to activate/deactivate Annoto. Selected users must be of *PrivateOnly* role or above.

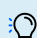
* **DELETE**

user

Hen@annoto.net

Select Users / Groups

[+ Add "activationEditAllowedUsers"](#)

 As a best practice, we suggest creating a Kaltura Users Group named for example "annoto_admins" and adding only this group to activationEditAllowedUsers list. For more information on Groups visit: [Kaltura Groups](#).

Additional Activation settings

- guestUsersAllowed** - If checked, not-logged-in Users will be able to see Annoto Widget. [KMS only]
- deployment** - Select Annoto Deployment Regio EU/ US / Custom.

Player Embed Sizes

- **playerEmbedSizesOverride** - Enables overriding the BSE player sizes (for the optimal Annoto user experience).
- **keepCustomBSEPlayerSizes** - If enabled, override only the default sizes but keep any custom BSE player sizes. Note: when user embeds, the default size would be the custom and not the annoto-defined size.
- **playerEmbedSizes** - Defines sizes that can be used for embedded players. Defines the player size in the following format: {width}x{height}. Recommended sizes:
 - Large: 1200*628
 - Medium: 1024*576
 - Small: 900*506

Integration

The following fields are auto-populated with the enablement of the module.

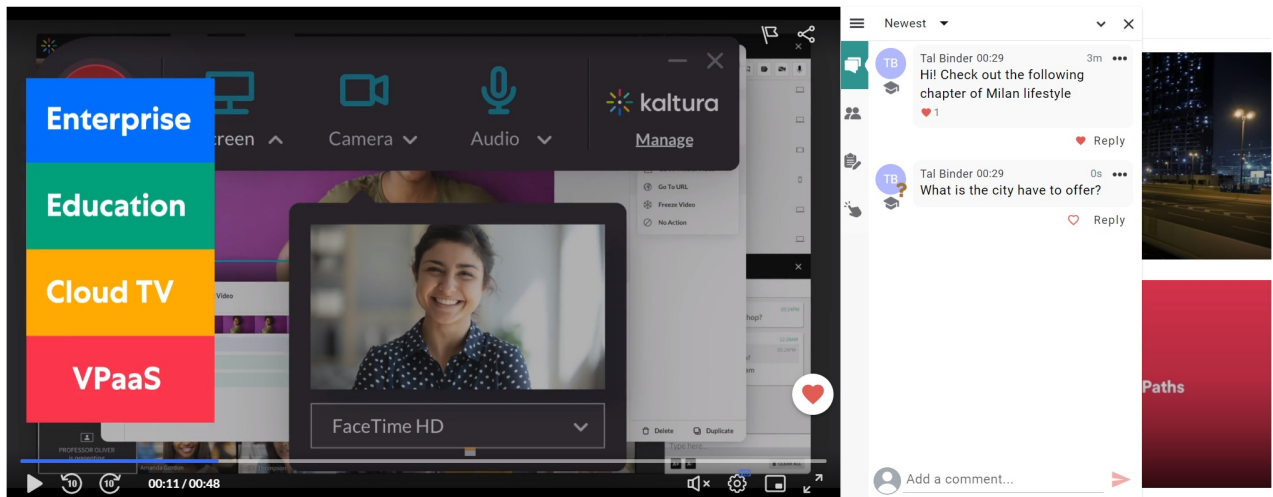
- **appTokenId** - ID of the App Token.
- **appToken** - Value of the App token.
- **appTokenHash** - Hash type used to generate the App token.
- **uiConfigId** - Player UI config ID to be used by Annoto.

Player Plugin Settings

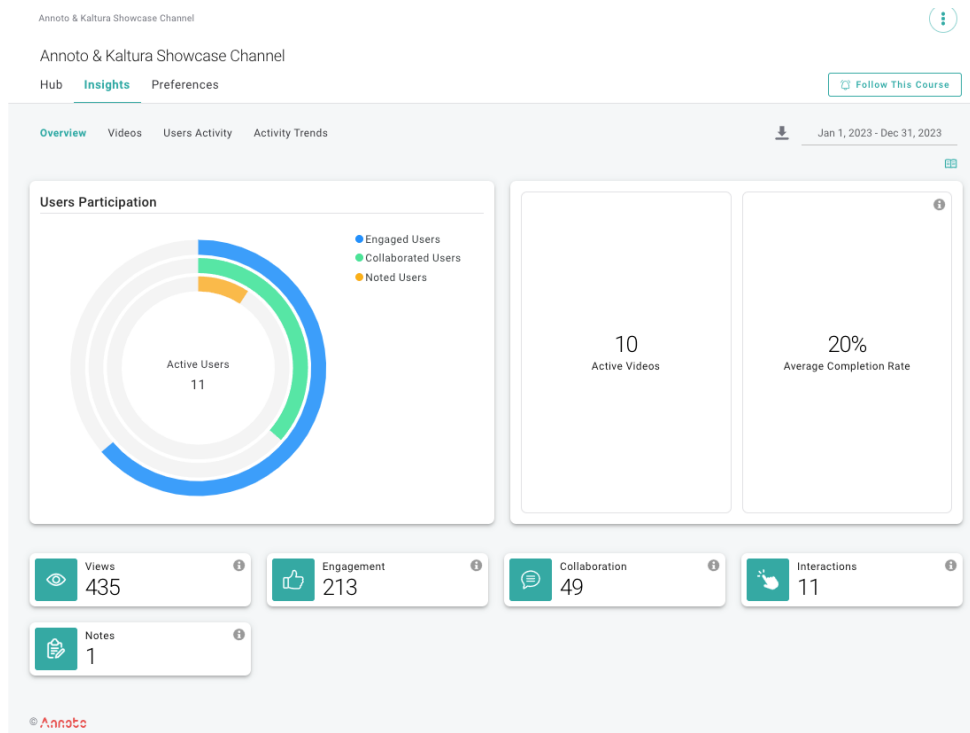
The following fields are auto-populated with the enablement of the module. Do not change!

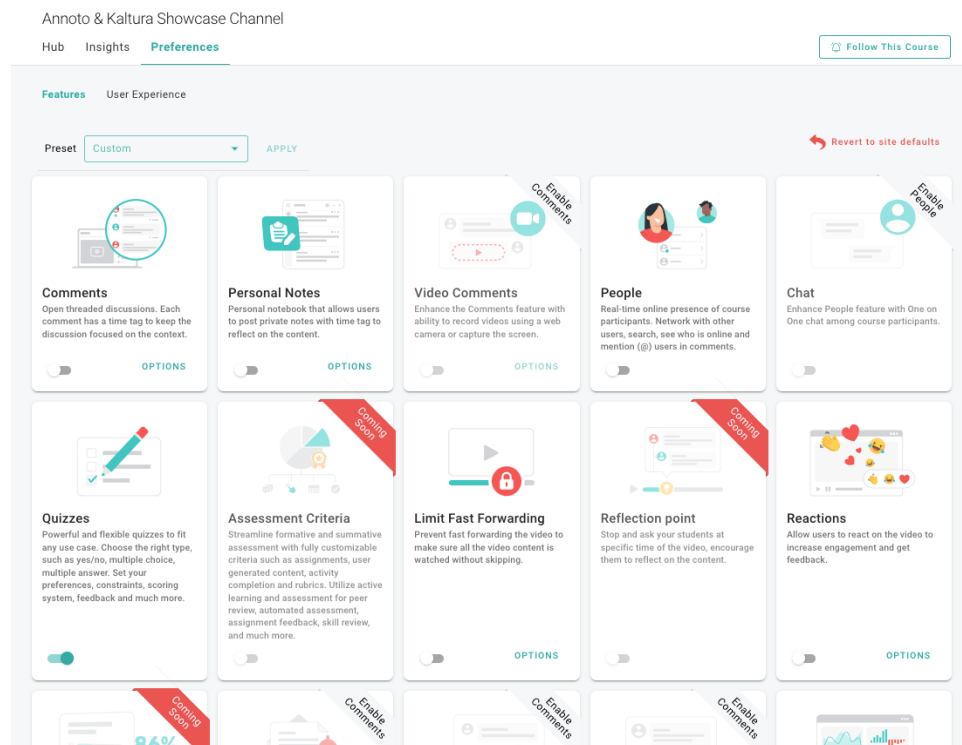
- **enablePlayerPlugin** - Enables the built-in Player Plugin. If disabled, the Annoto plugin would not be injected into the Kaltura player by the module. Allows using Kaltura player with custom (non-production) Annoto plugin.
- **playerPluginUrl** - URL of the V2 player Annoto plugin. Must start with '//'.
- **v7PlayerPluginUrl** - URL of the V7 player Annoto plugin. Must start with '//'.
- **analyticsCDN** - CDN host of the Annoto analytics assets (read-only).

The following image demonstrates the Kaltura Player with [Annoto Widget](#) enabled.



The following image demonstrates [Annoto Dashboard](#) within MediaGallery/Channel:





Troubleshooting

Symptom	Resolution
After enabling the Module and entering the apiKey, the ssoSecret, and enabling Annoto on the media, Annoto is still not displaying.	<p>We need to verify that the client does not have an alias domain, instead of the traditional partner_id.mediaspace.com domain, as the apiKey and ssoSecret that Annoto provides are generated based on the domain</p> <p>Verify that the apiKey and ssoSecret are not switched by mistake.</p>

[template("cat-subscribe")]