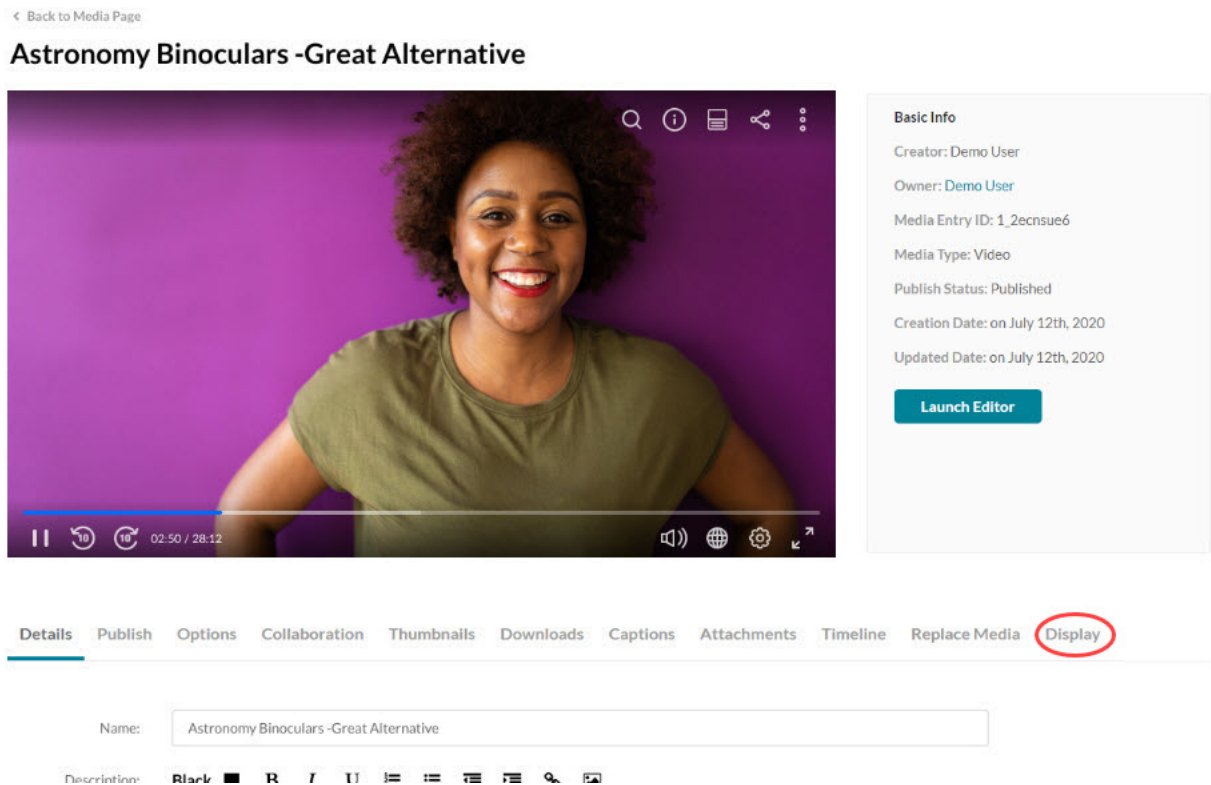


Custom Media Display

 This article is designated for all users.

1. Login to your KMS or KAF applications.
2. Navigate to [My Media](#).
3. Select an entry you own or can edit and click the Edit icon **or** select Edit from the Actions drop-down menu. The Edit Entry page displays.



4. Click on the Display tab.

[Details](#)
[Publish](#)
[Options](#)
[Collaboration](#)
[Thumbnails](#)
[InPlayer Monetization](#)
[Downloads](#)
[Captions](#)
[Attachments](#)
[Replace Media](#)
[Display](#)
[★ Registration](#)

Use the Display tab to change or modify an entry's display.

Show elements:

- ☒ Header
- ☒ Header logo
- ☒ Sidebar
- ☒ Entry properties
- ☒ Entry tabs
- ☒ Comments
- ☒ Footer

Choose what elements should show on the page with the video

Background color: ☐

Choose the color of the entry page background

CSS: No file chosen

Upload a CSS file to customize the entry's page.

Different logo: No file chosen

Add a logo image file to show for this entry only. Default logo size is 325px wide X 41px high. Note: The width of the logo image affects the amount of space available for the Header menu.

5. Choose from the following options to customize the design of the entry page. Note that the availability of the possible settings depends on your Kaltura administrator's configuration:

- a. Choose a custom player for the page. The choices available are from a predefined set of players supplied by the admin.
- b. Uncheck the UI elements that you want to hide on the entry page.
 - a. Header – The Header includes the entire bar on the top of the KMS/KAF screen. If a you decide to remove it, it will also remove the logo, and all other links.
 - b. Header logo – The KMS/KAF main logo on the top left of KMS/KAF screen.
 - c. Sidebar – The sidebar refers to the bar to the right of the player. Depending on your KMS/KAF settings, you may or may not have a sidebar, related media, or a playlist chosen by the admin.
 - d. Entry properties – The properties are right below the player, containing the entry's name, owner, and 3 counter icons for views, comments and likes.
 - e. Entry tabs – Below the properties tab, the entry tab includes the Details, Share, Attachments and the Actions drop down menu.
 - f. Comments – The comment section, if enabled in your KMS/KAF.
 - g. Footer – The KMS/KAF footer.
- c. Choose a background color for the entry page.
- d. Choose a CSS file to alter only this single page.

Click on the "Upload CSS" button to apply the change. Note that clicking on this

button without uploading a file first will have no effect.

e. Choose a new logo that will replace the existing one when viewing this page.

Click on the "Upload Logo" button to apply the change. Note that clicking on this button without uploading a file first will have no effect.

6. Click Save entry theme.

Example

The following shows a sample configuration where all boxes have been unchecked and the background color was changed.

Use the Display tab to change or modify an entry's display.

Entry player: Default player ▼

Choose a player for this entry

Show elements:

- ☐ Header
- ☐ Header logo
- ☐ Sidebar
- ☐ Entry properties
- ☐ Entry tabs
- ☐ Comments
- ☐ Footer

Choose what elements should show on the page with the video

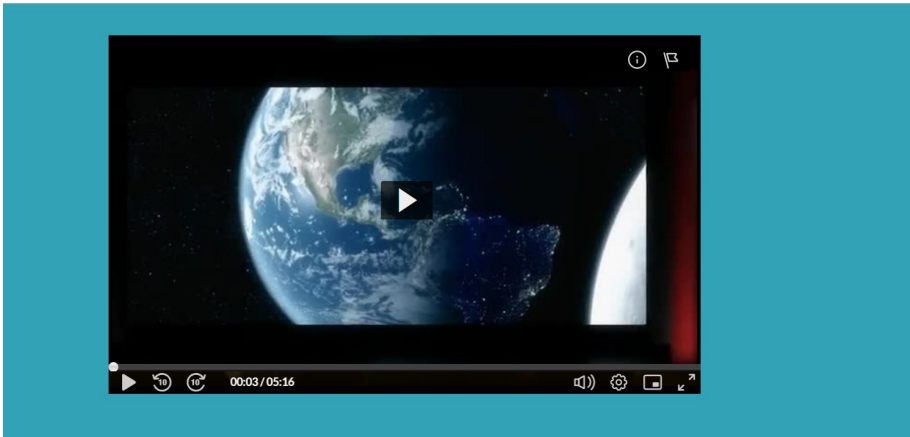
Background color: #32a3b6 Choose the color

CSS: Choose File Upload a CSS file to

Upload css

Save entry theme

The resulting media is displayed as follows:



[template("cat-subscribe")]