



## Create and Add Media to a Playlist

This article describes how to create and add media to a playlist in KMS and KAF.

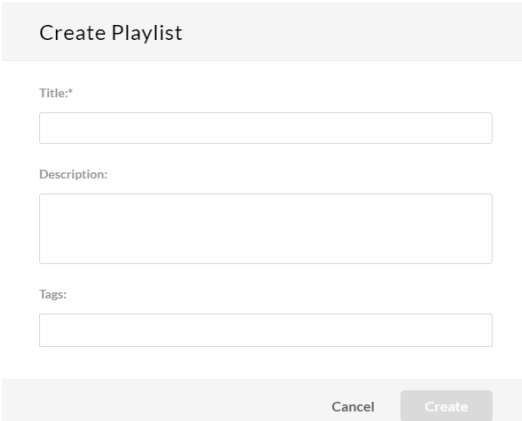
 If you cannot create or add media to a playlist, ask your KMS or KAF administrator to give you the required permission.

 Kaltura Video Quizzes can only be added to a playlist in applications where the main playlist player is set to a **v7 player**. To replace your player see [KMS and KAF player V7 replacement tool](#).

### From the My Playlists Page in KMS

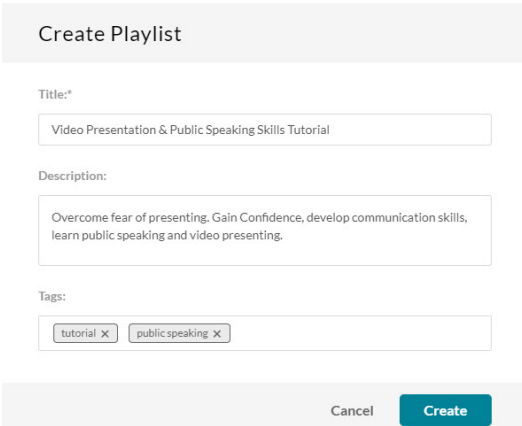
#### To create a playlist

1. Access the My Playlists page.
2. Click **Create Playlist**. The Create Playlist window displays.



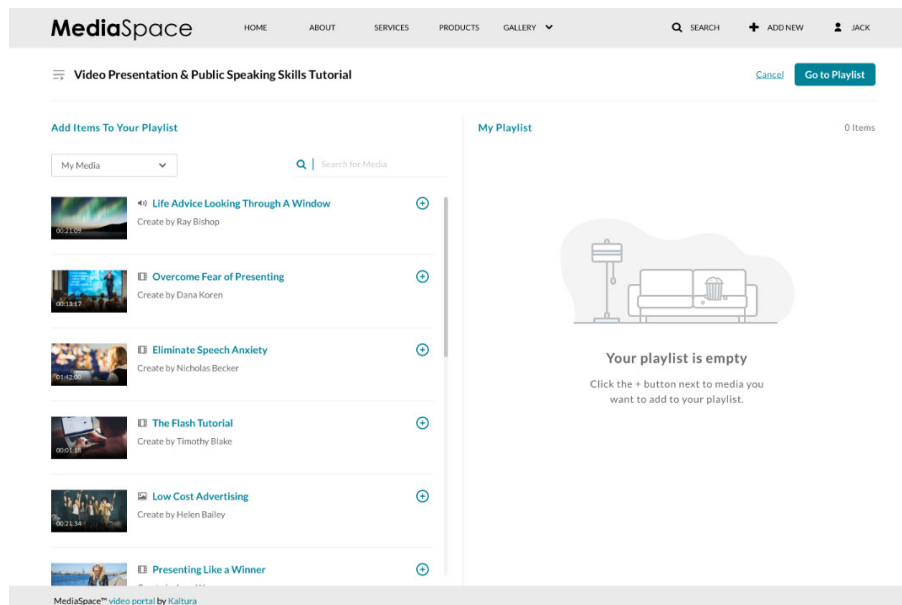
The 'Create Playlist' window is a light gray modal box. It contains three text input fields: 'Title:\*' (required), 'Description:', and 'Tags:'. At the bottom right, there are two buttons: 'Cancel' and 'Create'.

3. Type a Title (required), Description, and Tags for the playlist.



The 'Create Playlist' window is shown with example data. The 'Title:\*' field contains 'Video Presentation & Public Speaking Skills Tutorial'. The 'Description:' field contains 'Overcome fear of presenting. Gain Confidence, develop communication skills, learn public speaking and video presenting.' The 'Tags:' field contains two tags: 'tutorial' and 'publicspeaking', each with a close button (X). At the bottom right, there are two buttons: 'Cancel' and 'Create'.

4. Click **Create**. The Add Items To Your Playlist window displays.

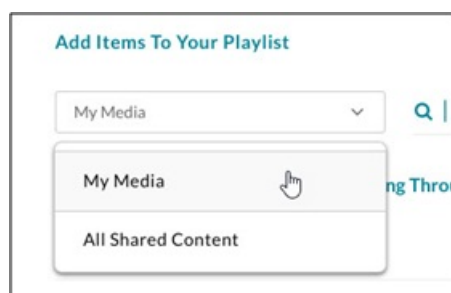


5. Go to step 2 below.

## To add media to an existing playlist

**⚠** You may not add media to the "Watch Later" playlist from the Edit Playlist Details page. Users may add media to the "Watch Later" playlist from a media's entry page or from the My Media page in KMS (see steps in subsequent sections).

1. Access the [Edit Playlist Details page](#).
2. In the Add Items to Your Playlist section, you may change the library. Select My Media or All Shared Content (equivalent to a global search in MediaSpace). *Note that All Shared Content is not available in KAF.*



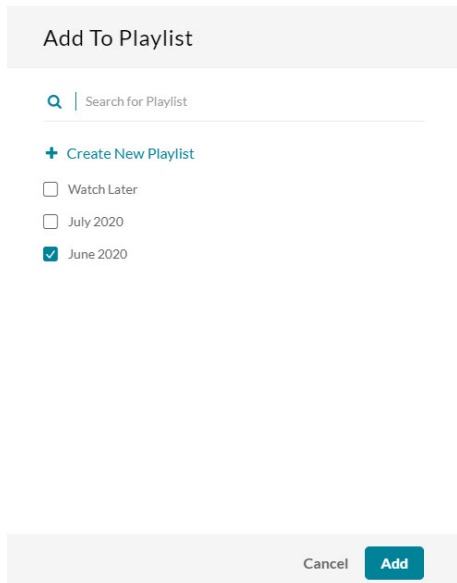
3. Type search criteria in the Search field and click Enter.
4. Click on the + button(s) next to the items you want to add to your playlist. Items selected display a check mark.  
If you change your mind and do not want that item added, simply click the check mark to remove the item.
5. Depending on your application,
  - click **Go To Playlist** or **Go to Channel** if the playlist is newly created in KMS.

- click **Save** if the playlist is newly created in KAF.
- click **Save** if you added media to an existing playlist in KMS or KAF.

## From a Media's Entry Page in KMS

1. Browse to a media's entry page that you want to add to a playlist.
2. Select **Add to playlist** from the Actions menu.

The Add to Playlist window displays.



3. Click to choose a playlist from the list.
4. After you have made your selection, click **Add**. A message displays that this media was added to the playlist.

## From My Media in KMS

### To create a playlist

1. On the My Media page, check the box(es) to the left of at least one media you would like to add to the playlist.
2. Select Add to playlist from the Actions menu.
3. Click **+ Create New Playlist**, then type a name for the new playlist in the New Playlist Title field.

Add To Playlist

Search for Playlist

☐ Watch Later  
☐ July 2020  
☒ June 2020

- Click **Create**. The newly created playlist is shown in the list. Make sure the newly created playlist is checked.

Add To Playlist

Search for Playlist

[+ Create New Playlist](#)

☐ Watch Later  
☒ Video Presentation & Public Speaking Skills Tutorial  
☐ July 2020  
☐ June 2020

- Click **Add**. A message displays that this playlist was created successfully and the user is given a link to edit the playlist.

## To add media to an existing playlist

To add one entry at a time (option 1):

- On your My Media page, click the thumbnail or title of the media you want to add to a playlist. The media entry page displays.
- Select **Add to playlist** from the Actions menu.

To add one entry at a time (option 2):


1. On your My Media page, select a media item by checking the box next to the media item.
2. Select **Add to playlist** from the Actions menu.

To add multiple entries at the same time:

1. On your My Media page, select multiple media items by checking the boxes next to each.
2. Select **Add to playlist** from the Actions menu.

The Add to Playlist window displays.

Add To Playlist

 Search for Playlist

+ Create New Playlist

☐ Watch Later

☐ July 2020

☒ June 2020

Cancel
Add

1. Click to choose a playlist from the list.
2. After you have made your selection, click **Add**. A message displays that this media was added to the playlist.

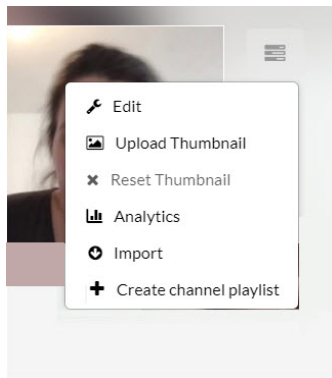
## From My Channels in KMS or Media Gallery in KAF

See [Channel/Media Gallery Playlist Feature Description](#).

### To create a playlist

Option 1:

1. Access a [channel/Media Gallery](#).
2. Select + **Create channel playlist** from the hamburger menu.



The Create Playlist window displays.

3. Go to [step 3 here](#).

Option 2:

1. Access a [channel/Media Gallery](#).
2. Select Edit from the Actions menu. The Edit <Channel Name/Media Gallery Name> Page is displayed.

### Edit Fireside Chats

Details
Theme
Playlists
Users

Name:

Description:

Black
Bold
Italic
Underline

Subscribe to watch all recordings of the team's fireside chats

Tags:

education

Privacy:

☐ Open - All logged in users can view and contribute content (contribution is not allowed for viewer-role users).
☐ Restricted - All logged in users can view content and only channel members can contribute content.

Click on the Playlist tab to display the channel/Media Gallery's existing playlists. 3.

## Edit Fireside Chats

Details Theme **Playlists** Users

3 Playlists

[+ Create Channel Playlist](#)

Title	Type	Description	Entries	Actions
■ To Learn	Manual	This is the description.	2	<a href="#">✎</a> <a href="#">🗑</a> <a href="#">↻</a>
■ To Watch	Manual		21	<a href="#">✎</a> <a href="#">🗑</a> <a href="#">↻</a>
■ Playlist ABC	Manual	This playlist includes A, B, and C.	2	<a href="#">✎</a> <a href="#">🗑</a> <a href="#">↻</a>

4. Click **Create Channel Playlist**. The Create Playlist window displays.

5. Go to [step 3 here](#).

### To add media to an existing playlist

Option 1:

1. Access the [Edit Playlist Details](#) page.
2. Go to [step 2 here](#).

Option 2:

1. Access [My Channels/Media Gallery](#).
2. Click on a channel thumbnail to open a `<channel/Media Gallery_name>` page.
3. Click on the Media tab.
4. Click the three dots on the lower right side of a media item and click on the Add to channel/Media Gallery playlist button. The Add to Playlist window displays.
5. Click to choose a playlist from the list.
6. After you have made your selection, click **Add**. A message displays that this media was added to the playlist.

See additional information on playlists as follows:

- [Access a playlist](#).
- [Delete a playlist](#).
- [Reorder media in a playlist](#).
- [Remove media from a playlist](#).
- [Copy the playlist's embed code to paste it on a web site](#).

[template("cat-subscribe")]